

## Product datasheet for **TA367934**

### **CAMK2G Rabbit Polyclonal Antibody**

#### **Product data:**

Product Type:	Primary Antibodies
Applications:	IHC, WB
Recommended Dilution:	WB: 500-2000 WB positive control: Mouse heart tissue, Human heart tissue, Rat heart tissue lysates IHC: 25-50 Positive control: Human liver cancer Predicted cell location: Cytoplasm
Reactivity:	Human, Mouse, Rat
Host:	Rabbit
Isotype:	IgG
Clonality:	Polyclonal
Immunogen:	Synthetic peptide of human CAMK2G
Formulation:	pH7.4 PBS, 0.05% NaN <sub>3</sub> , 40% Glycerol
Concentration:	lot specific
Purification:	Antigen affinity purification
Conjugation:	Unconjugated
Storage:	Store at -20°C.
Stability:	1 year
Predicted Protein Size:	63 kDa
Gene Name:	calcium/calmodulin dependent protein kinase II gamma
Database Link:	<a href="#">Entrez Gene 818 Human Q13555</a>



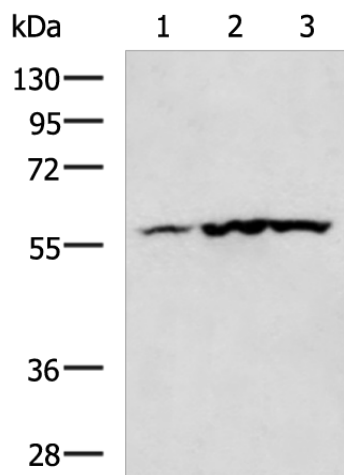
[View online »](#)

**Background:**

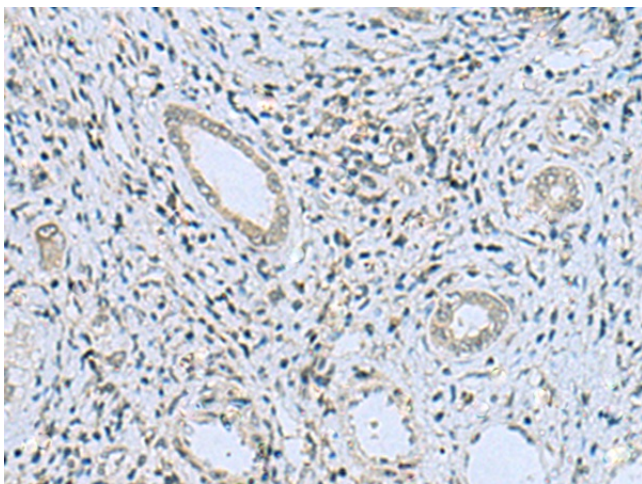
The product of this gene is one of the four subunits of an enzyme which belongs to the serine/threonine protein kinase family, and to the Ca(2+)/calmodulin-dependent protein kinase subfamily. Calcium signaling is crucial for several aspects of plasticity at glutamatergic synapses. In mammalian cells the enzyme is composed of four different chains: alpha, beta, gamma, and delta. The product of this gene is a gamma chain. Many alternatively spliced transcripts encoding different isoforms have been described but the full-length nature of all the variants has not been determined.

**Synonyms:**

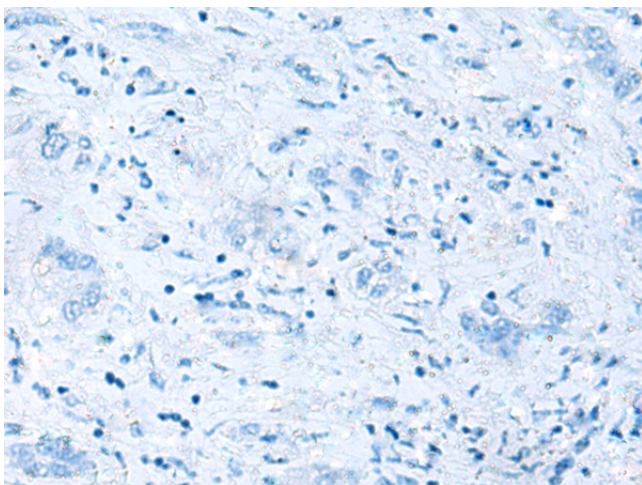
CAMK; CAMK-II; CAMKG; FLJ16043; MGC26678

**Product images:**

Gel: 8%SDS-PAGE  
Lysate: 40 µg  
Lane 1-3: Mouse heart tissue  
Human heart tissue  
Rat heart tissue lysates  
Primary antibody: TA367934 (CAMK2G Antibody)  
at dilution 1/400  
Secondary antibody: Goat anti rabbit IgG at  
1/5000 dilution  
Exposure time: 1 minute



Immunohistochemistry of paraffin-embedded  
Human liver cancer tissue using TA367934  
(CAMK2G Antibody) at dilution 1/20 (Original  
magnification: ×200)



Immunohistochemistry of paraffin-embedded Human liver cancer tissue using TA367934 (CAMK2G Antibody) at dilution 1/20, treated with synthetic peptide. (Original magnification:  $\times 200$ )