

## Product datasheet for **TA367915S**

### Complement C3 (C3) Rabbit Polyclonal Antibody

#### Product data:

Product Type:	Primary Antibodies
Applications:	IHC, WB
Recommended Dilution:	WB: 200-1000 WB positive control: Human liver cancer tissue lysate IHC: 25-100 Positive control: Human liver cancer Predicted cell location: Cytoplasm and Cell membrane
Reactivity:	Human, Mouse, Rat
Host:	Rabbit
Isotype:	IgG
Clonality:	Polyclonal
Immunogen:	Synthetic peptide of human C3/C3b
Formulation:	pH7.4 PBS, 0.05% NaN <sub>3</sub> , 40% Glycerol
Purification:	Antigen affinity purification
Conjugation:	Unconjugated
Storage:	Store at -20°C.
Stability:	1 year
Predicted Protein Size:	70 kDa
Gene Name:	complement component 3
Database Link:	<a href="#">Entrez Gene 718 Human P01024</a>

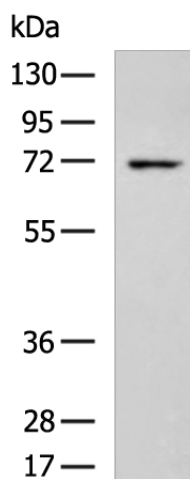
**Background:** Complement component C3 plays a central role in the activation of complement system. Its activation is required for both classical and alternative complement activation pathways. The encoded preprotein is proteolytically processed to generate alpha and beta subunits that form the mature protein, which is then further processed to generate numerous peptide products. The C3a peptide, also known as the C3a anaphylatoxin, modulates inflammation and possesses antimicrobial activity. Mutations in this gene are associated with atypical hemolytic uremic syndrome and age-related macular degeneration in human patients.



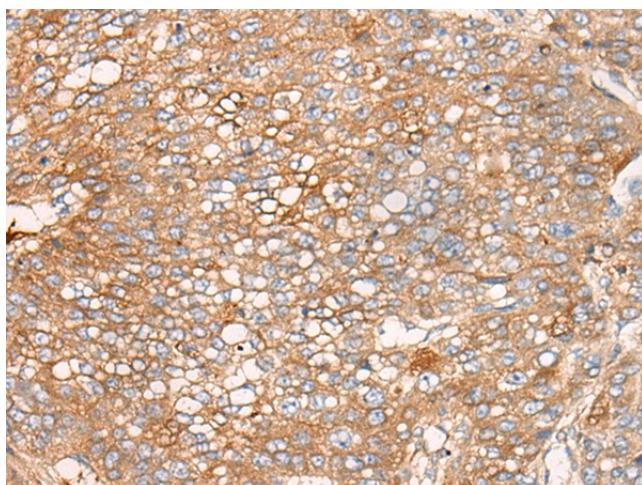
[View online »](#)

Synonyms: AHUS5; ARMD9; ASP; CPAMD1

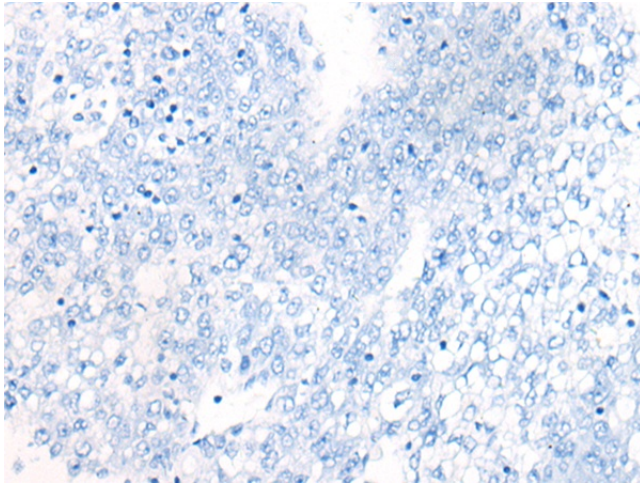
**Product images:**



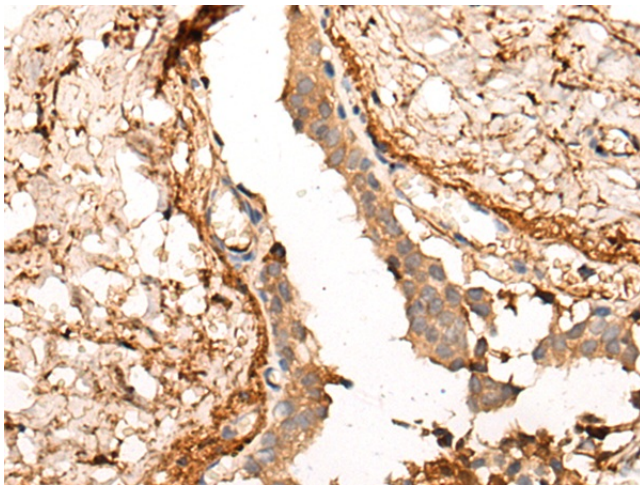
Gel: 8%SDS-PAGE  
 Lysate: 40 µg  
 Lane: Human liver cancer tissue lysate  
 Primary antibody: [TA367915] (C3/C3b Antibody) at dilution 1/200  
 Secondary antibody: Goat anti rabbit IgG at 1/5000 dilution  
 Exposure time: 10 seconds



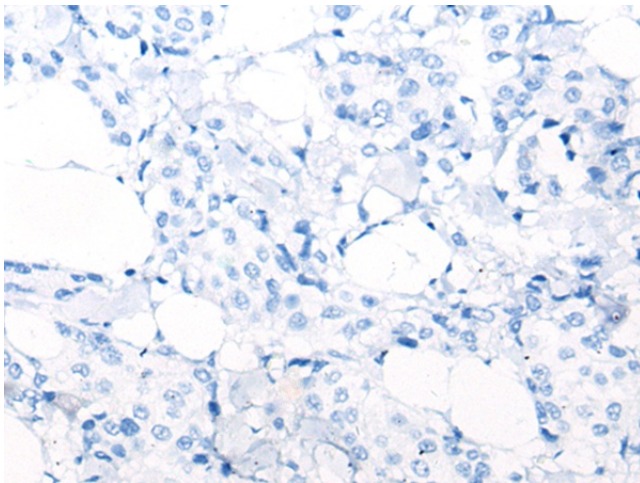
Immunohistochemistry of paraffin-embedded Human liver cancer tissue using [TA367915] (C3/C3b Antibody) at dilution 1/30 (Original magnification: ×200)



Immunohistochemistry of paraffin-embedded Human liver cancer tissue using [TA367915] (C3/C3b Antibody) at dilution 1/30, treated with synthetic peptide. (Original magnification: ×200)



Immunohistochemistry of paraffin-embedded Human breast cancer tissue using [TA367915] (C3/C3b Antibody) at dilution 1/30 (Original magnification: ×200)



Immunohistochemistry of paraffin-embedded Human breast cancer tissue using [TA367915] (C3/C3b Antibody) at dilution 1/30, treated with synthetic peptide. (Original magnification: ×200)