

Product datasheet for **TA367914S**

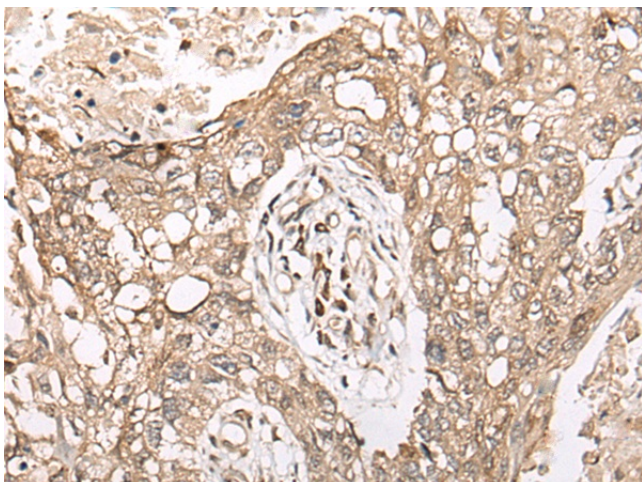
C2orf65 (M1AP) Rabbit Polyclonal Antibody

Product data:

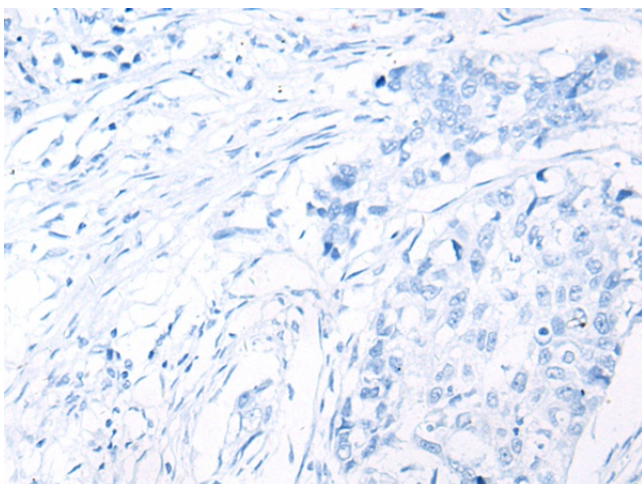
Product Type:	Primary Antibodies
Applications:	IHC
Recommended Dilution:	IHC: 30-150 Positive control: Human lung cancer Predicted cell location: Cytoplasm
Reactivity:	Human
Host:	Rabbit
Isotype:	IgG
Clonality:	Polyclonal
Immunogen:	Synthetic peptide of human M1AP
Formulation:	pH7.4 PBS, 0.05% NaN ₃ , 40% Glycerol
Purification:	Antigen affinity purification
Conjugation:	Unconjugated
Storage:	Store at -20°C.
Stability:	1 year
Gene Name:	meiosis 1 associated protein
Database Link:	Entrez Gene 130951 Human Q8TC57
Background:	This gene encodes a protein that is likely to function in progression of meiosis. A similar protein in mouse plays a role in gametogenesis in both sexes. Alternate splicing results in multiple transcript variants encoding different isoforms.
Synonyms:	C2orf65; D6Mm5e; SPATA37



[View online »](#)

Product images:

Immunohistochemistry of paraffin-embedded Human lung cancer tissue using [TA367914] (M1AP Antibody) at dilution 1/45 (Original magnification: $\times 200$)



Immunohistochemistry of paraffin-embedded Human lung cancer tissue using [TA367914] (M1AP Antibody) at dilution 1/45, treated with synthetic peptide. (Original magnification: $\times 200$)