

Product datasheet for **TA367912**

C20orf117 (SOGA1) Rabbit Polyclonal Antibody

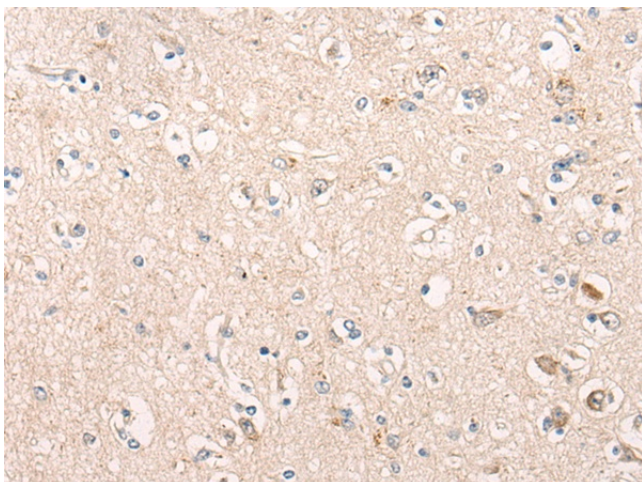
Product data:

Product Type:	Primary Antibodies
Applications:	IHC
Recommended Dilution:	IHC: 20-100 Positive control: Human brain Predicted cell location: Cytoplasm
Reactivity:	Human
Host:	Rabbit
Isotype:	IgG
Clonality:	Polyclonal
Immunogen:	Synthetic peptide of human SOGA1
Formulation:	pH7.4 PBS, 0.05% NaN ₃ , 40% Glycerol
Concentration:	lot specific
Purification:	Antigen affinity purification
Conjugation:	Unconjugated
Storage:	Store at -20°C.
Stability:	1 year
Gene Name:	suppressor of glucose, autophagy associated 1
Database Link:	Entrez Gene 140710 Human O94964
Background:	Regulates autophagy by playing a role in the reduction of glucose production in an adiponectin- and insulin-dependent manner.
Synonyms:	C20orf117; KIAA0889; SOGA

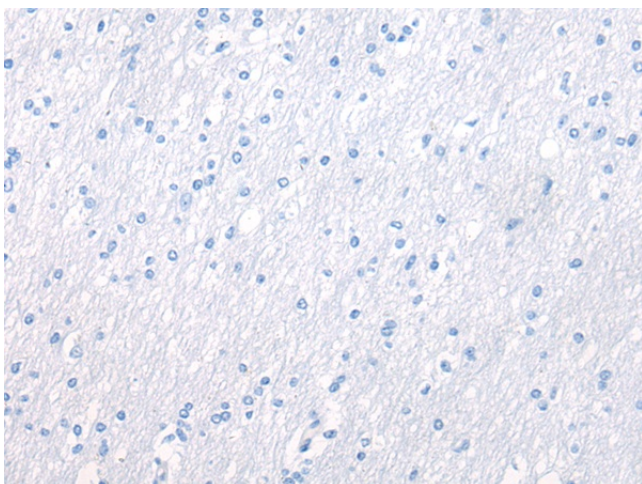


[View online »](#)

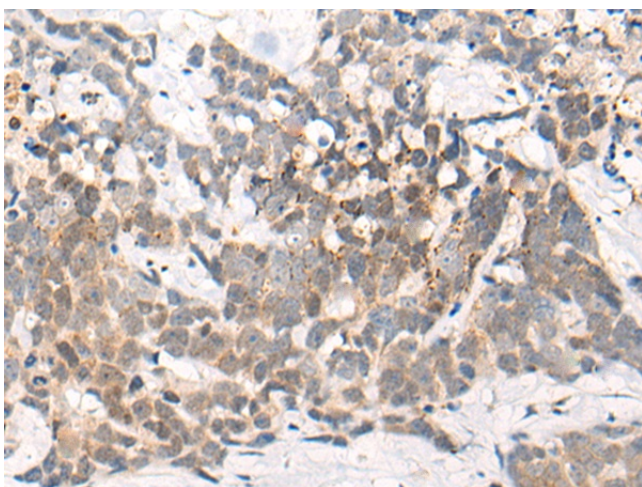
Product images:



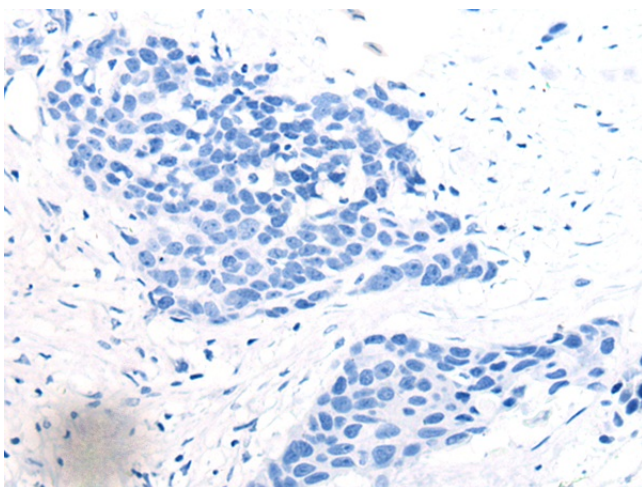
Immunohistochemistry of paraffin-embedded Human brain tissue using TA367912 (SOGA1 Antibody) at dilution 1/30 (Original magnification: ×200)



Immunohistochemistry of paraffin-embedded Human brain tissue using TA367912 (SOGA1 Antibody) at dilution 1/30, treated with synthetic peptide. (Original magnification: ×200)



Immunohistochemistry of paraffin-embedded Human thyroid cancer tissue using TA367912 (SOGA1 Antibody) at dilution 1/30 (Original magnification: $\times 200$)



Immunohistochemistry of paraffin-embedded Human thyroid cancer tissue using TA367912 (SOGA1 Antibody) at dilution 1/30, treated with synthetic peptide. (Original magnification: $\times 200$)