

Product datasheet for **TA367908**

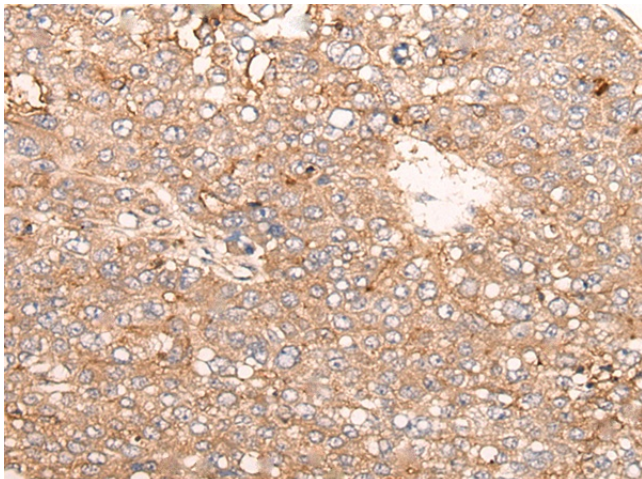
C19orf75 (SIGLECL1) Rabbit Polyclonal Antibody

Product data:

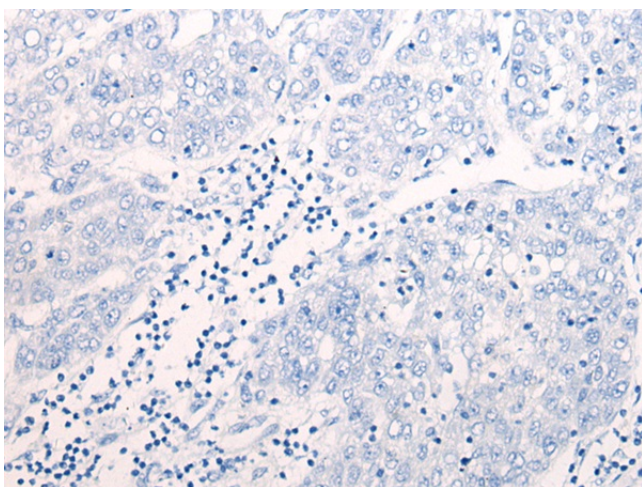
Product Type:	Primary Antibodies
Applications:	IHC
Recommended Dilution:	IHC: 40-200 Positive control: Human liver cancer Predicted cell location: Cytoplasm and Cell membrane
Reactivity:	Human
Host:	Rabbit
Isotype:	IgG
Clonality:	Polyclonal
Immunogen:	Synthetic peptide of human SIGLECL1
Formulation:	pH7.4 PBS, 0.05% NaN ₃ , 40% Glycerol
Concentration:	lot specific
Purification:	Antigen affinity purification
Conjugation:	Unconjugated
Storage:	Store at -20°C.
Stability:	1 year
Gene Name:	SIGLEC family like 1
Database Link:	Entrez Gene 284369 Human Q8N7X8
Background:	Putative adhesion molecule that mediates sialic-acid dependent binding to cells. The sialic acid recognition site may be masked by cis interactions with sialic acids on the same cell surface.
Synonyms:	C19orf75; SIGLEC23P; SIGLECP7



[View online »](#)

Product images:

Immunohistochemistry of paraffin-embedded Human liver cancer tissue using TA367908 (SIGLECL1 Antibody) at dilution 1/65 (Original magnification: $\times 200$)



Immunohistochemistry of paraffin-embedded Human liver cancer tissue using TA367908 (SIGLECL1 Antibody) at dilution 1/65, treated with synthetic peptide. (Original magnification: $\times 200$)