

Product datasheet for **TA367906**

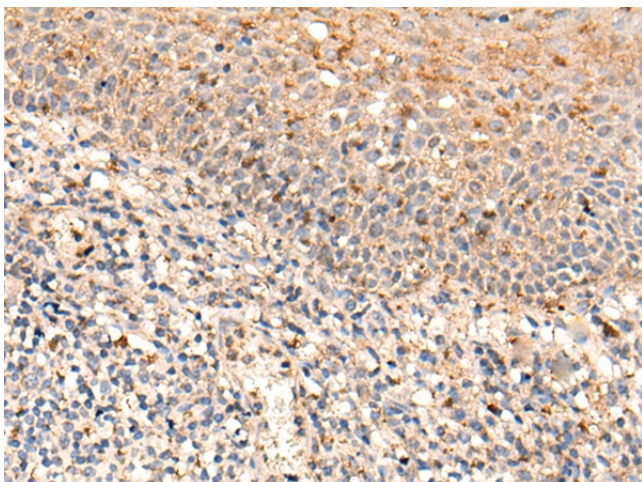
C16orf9 (FAM234A) Rabbit Polyclonal Antibody

Product data:

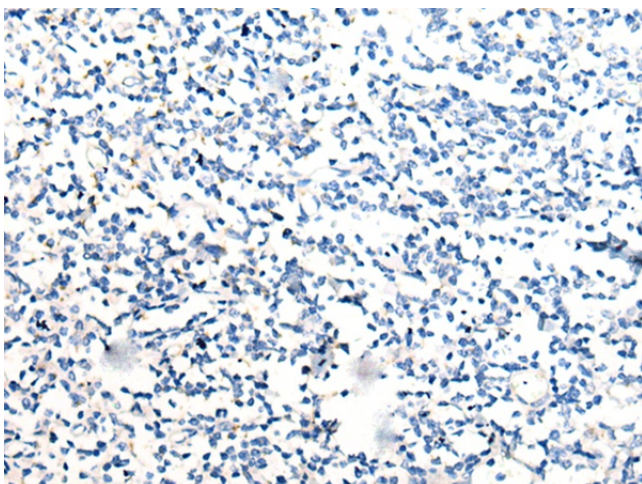
Product Type:	Primary Antibodies
Applications:	IHC
Recommended Dilution:	IHC: 10-50 Positive control: Human tonsil Predicted cell location: Cell membrane
Reactivity:	Human, Mouse, Rat
Host:	Rabbit
Isotype:	IgG
Clonality:	Polyclonal
Immunogen:	Synthetic peptide of human FAM234A
Formulation:	pH7.4 PBS, 0.05% NaN ₃ , 40% Glycerol
Concentration:	lot specific
Purification:	Antigen affinity purification
Conjugation:	Unconjugated
Storage:	Store at -20°C.
Stability:	1 year
Gene Name:	family with sequence similarity 234 member A
Database Link:	Entrez Gene 83986 Human Q9H0X4
Background:	FAM234A, also known as ITFG3, which is a 552 amino acid single-pass transmembrane protein that contains FG-GAP repeats, a motif commonly found in Integrin proteins. There are two isoforms of ITFG3 that are produced as a result of alternative splicing events.



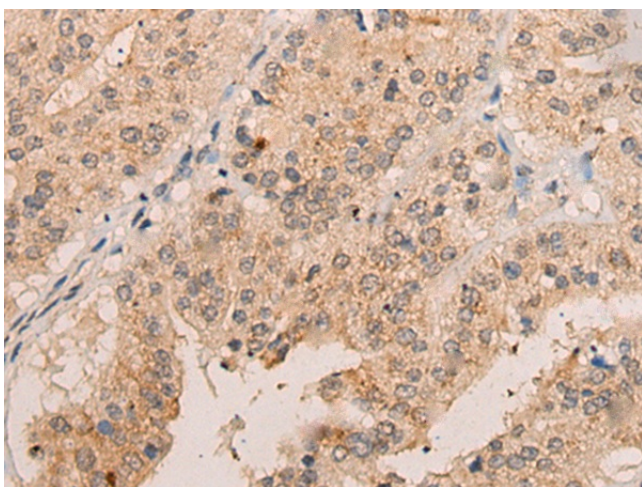
[View online »](#)

Product images:

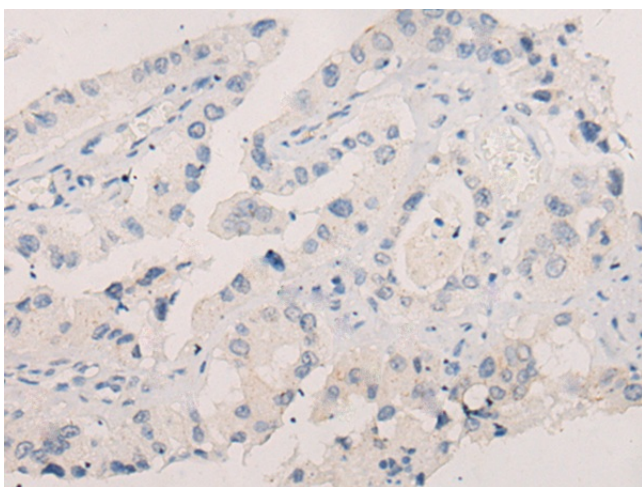
Immunohistochemistry of paraffin-embedded Human tonsil tissue using TA367906 (FAM234A Antibody) at dilution 1/25 (Original magnification: $\times 200$)



Immunohistochemistry of paraffin-embedded Human tonsil tissue using TA367906 (FAM234A Antibody) at dilution 1/25, treated with synthetic peptide. (Original magnification: $\times 200$)



Immunohistochemistry of paraffin-embedded Human liver cancer tissue using TA367906 (FAM234A Antibody) at dilution 1/25 (Original magnification: ×200)



Immunohistochemistry of paraffin-embedded Human liver cancer tissue using TA367906 (FAM234A Antibody) at dilution 1/25, treated with synthetic peptide. (Original magnification: ×200)