

## Product datasheet for **TA367904S**

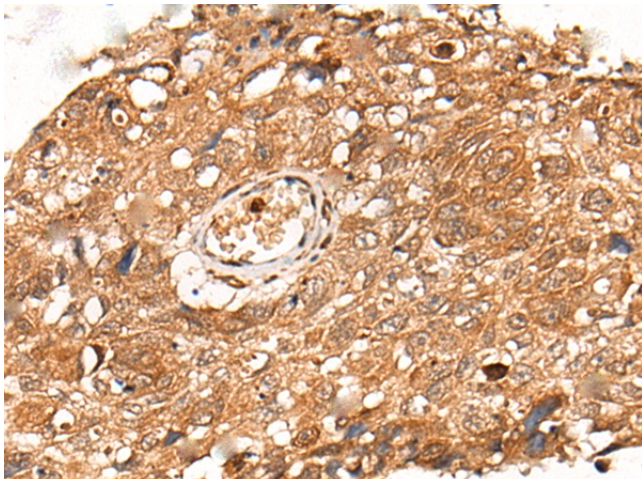
### **C16orf44 (KLHL36) Rabbit Polyclonal Antibody**

#### **Product data:**

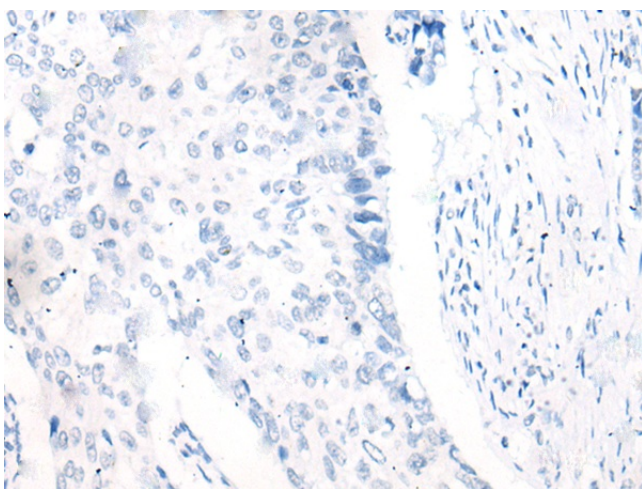
Product Type:	Primary Antibodies
Applications:	IHC
Recommended Dilution:	IHC: 40-200 Positive control: Human lung cancer Predicted cell location: Nucleus and Cytoplasm
Reactivity:	Human, Mouse, Rat
Host:	Rabbit
Isotype:	IgG
Clonality:	Polyclonal
Immunogen:	Synthetic peptide of human KLHL36
Formulation:	pH7.4 PBS, 0.05% NaN <sub>3</sub> , 40% Glycerol
Purification:	Antigen affinity purification
Conjugation:	Unconjugated
Storage:	Store at -20°C.
Stability:	1 year
Gene Name:	kelch like family member 36
Database Link:	<a href="#">Entrez Gene 79786 Human Q8N4N3</a>
Background:	Probable substrate-specific adapter of an E3 ubiquitin-protein ligase complex which mediates the ubiquitination and subsequent proteasomal degradation of target proteins.
Synonyms:	C16orf44; FLJ12543



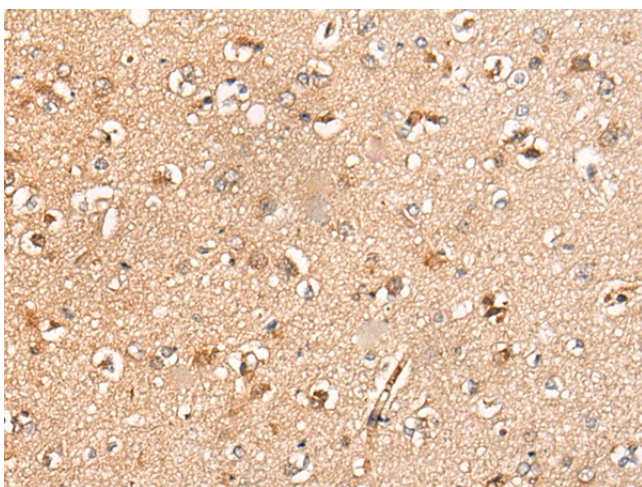
[View online »](#)

**Product images:**

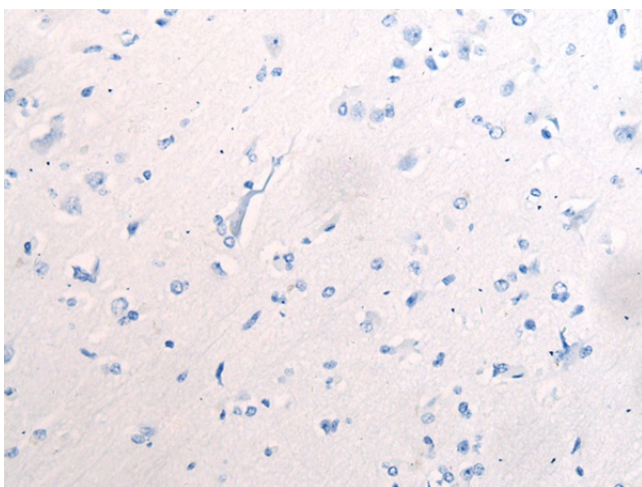
Immunohistochemistry of paraffin-embedded Human lung cancer tissue using [TA367904] (KLHL36 Antibody) at dilution 1/55 (Original magnification:  $\times 200$ )



Immunohistochemistry of paraffin-embedded Human lung cancer tissue using [TA367904] (KLHL36 Antibody) at dilution 1/55, treated with synthetic peptide. (Original magnification:  $\times 200$ )



Immunohistochemistry of paraffin-embedded Human brain tissue using [TA367904] (KLHL36 Antibody) at dilution 1/55 (Original magnification:  $\times 200$ )



Immunohistochemistry of paraffin-embedded Human brain tissue using [TA367904] (KLHL36 Antibody) at dilution 1/55, treated with synthetic peptide. (Original magnification:  $\times 200$ )