

Product datasheet for **TA367895**

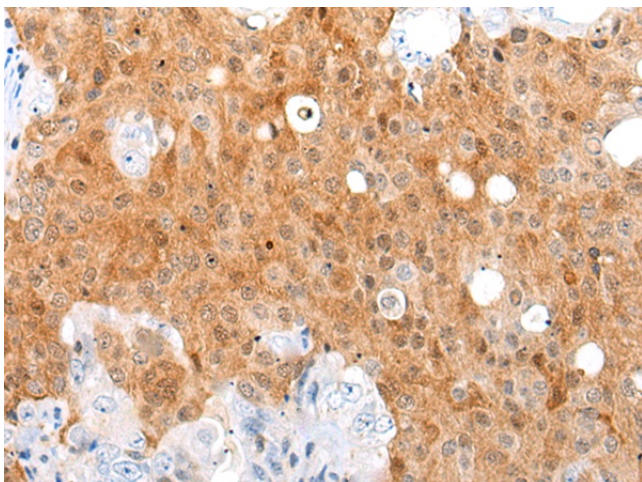
C11orf17 (AKIP1) Rabbit Polyclonal Antibody

Product data:

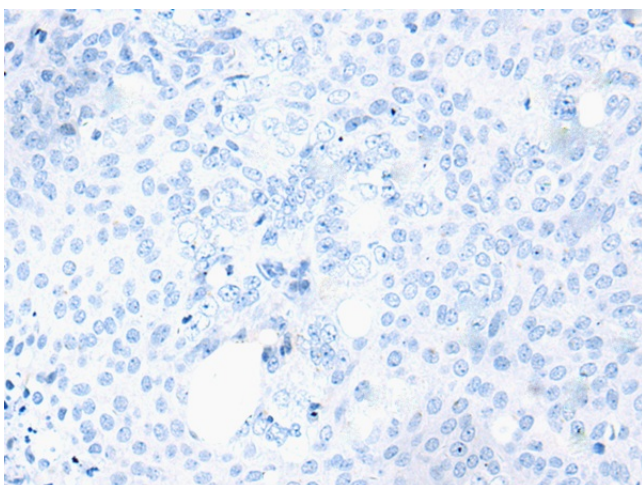
Product Type:	Primary Antibodies
Applications:	IHC
Recommended Dilution:	IHC: 25-100 Positive control: Human ovarian cancer Predicted cell location: Nucleus
Reactivity:	Human, Mouse
Host:	Rabbit
Isotype:	IgG
Clonality:	Polyclonal
Immunogen:	Synthetic peptide of human AKIP1
Formulation:	pH7.4 PBS, 0.05% NaN ₃ , 40% Glycerol
Concentration:	lot specific
Purification:	Antigen affinity purification
Conjugation:	Unconjugated
Storage:	Store at -20°C.
Stability:	1 year
Gene Name:	A-kinase interacting protein 1
Database Link:	Entrez Gene 56672 Human Q9NQ31
Background:	This gene encodes a nuclear protein that interacts with protein kinase A catalytic subunit, and regulates the effect of the cAMP-dependent protein kinase signaling pathway on the NF-kappa-B activation cascade. Alternatively spliced transcript variants have been described for this gene.
Synonyms:	BCA3; C11orf17



[View online »](#)

Product images:

Immunohistochemistry of paraffin-embedded Human ovarian cancer tissue using TA367895 (AKIP1 Antibody) at dilution 1/30 (Original magnification: $\times 200$)



Immunohistochemistry of paraffin-embedded Human ovarian cancer tissue using TA367895 (AKIP1 Antibody) at dilution 1/30, treated with synthetic peptide. (Original magnification: $\times 200$)