

Product datasheet for **TA367894S**

CYP11B2 Rabbit Polyclonal Antibody

Product data:

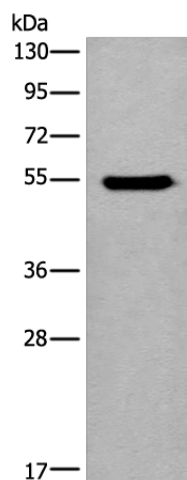
Product Type:	Primary Antibodies
Applications:	IHC, WB
Recommended Dilution:	WB: 500-2000 WB positive control: HEPG2 cell lysate IHC: 50-300 Positive control: Human brain Predicted cell location: Cytoplasm
Reactivity:	Human
Host:	Rabbit
Isotype:	IgG
Clonality:	Polyclonal
Immunogen:	Synthetic peptide of human CYP11B2
Formulation:	pH7.4 PBS, 0.05% NaN ₃ , 40% Glycerol
Purification:	Antigen affinity purification
Conjugation:	Unconjugated
Storage:	Store at -20°C.
Stability:	1 year
Predicted Protein Size:	58 kDa
Gene Name:	cytochrome P450 family 11 subfamily B member 2
Database Link:	Entrez Gene 1585 Human P19099

Background: This gene encodes a member of the cytochrome P450 superfamily of enzymes. The cytochrome P450 proteins are monooxygenases which catalyze many reactions involved in drug metabolism and synthesis of cholesterol, steroids and other lipids. This protein localizes to the mitochondrial inner membrane. The enzyme has steroid 18-hydroxylase activity to synthesize aldosterone and 18-oxocortisol as well as steroid 11 beta-hydroxylase activity. Mutations in this gene cause corticosterone methyl oxidase deficiency.

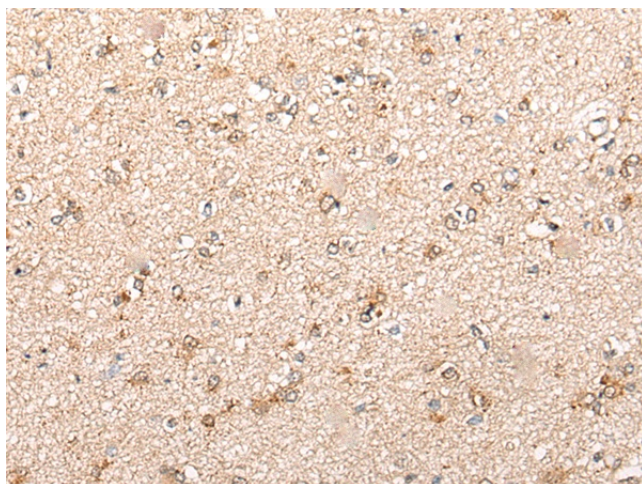
Synonyms: ALDOS; CPN2; CYP11B; CYP11BL; CYPXIB2; P-450Aldo; P-450C18; P450aldo; P450C18



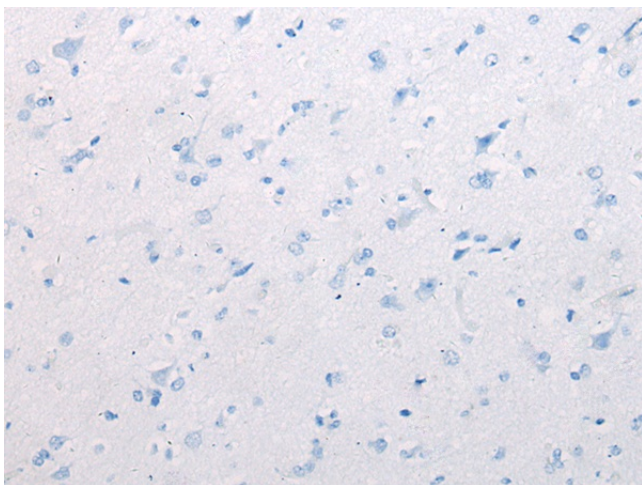
[View online »](#)

Product images:

Gel: 8%SDS-PAGE
Lysate: 40 μ g
Lane: HEPG2 cell lysate
Primary antibody: [TA367894] (CYP11B2 Antibody) at dilution 1/650
Secondary antibody: Goat anti rabbit IgG at 1/8000 dilution
Exposure time: 30 seconds



Immunohistochemistry of paraffin-embedded Human brain tissue using [TA367894] (CYP11B2 Antibody) at dilution 1/70 (Original magnification: \times 200)



Immunohistochemistry of paraffin-embedded Human brain tissue using [TA367894] (CYP11B2 Antibody) at dilution 1/70, treated with synthetic peptide. (Original magnification: $\times 200$)