

## Product datasheet for **TA367893**

### **C10orf78 (SFR1) Rabbit Polyclonal Antibody**

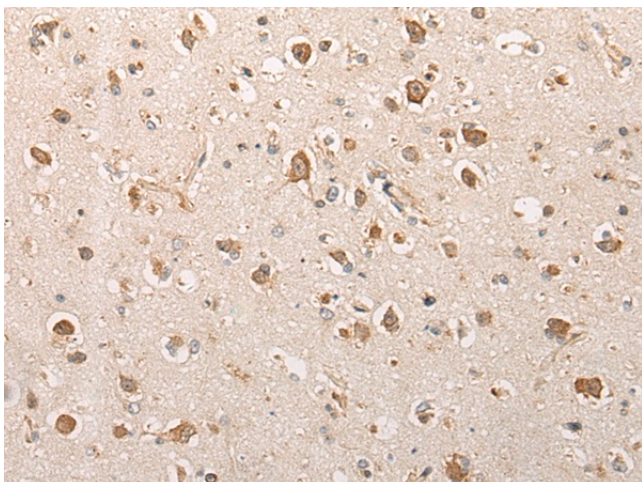
#### **Product data:**

Product Type:	Primary Antibodies
Applications:	IHC
Recommended Dilution:	IHC: 20-100 Positive control: Human brain Predicted cell location: Nucleus
Reactivity:	Human, Mouse, Rat
Host:	Rabbit
Isotype:	IgG
Clonality:	Polyclonal
Immunogen:	Synthetic peptide of human SFR1
Formulation:	pH7.4 PBS, 0.05% NaN <sub>3</sub> , 40% Glycerol
Concentration:	lot specific
Purification:	Antigen affinity purification
Conjugation:	Unconjugated
Storage:	Store at -20°C.
Stability:	1 year
Gene Name:	SWI5 dependent homologous recombination repair protein 1
Database Link:	<a href="#">Entrez Gene 119392 Human Q86XK3</a>
Background:	Component of the SWI5-SFR1 complex, a complex required for double-strand break repair via homologous recombination (PubMed:21252223). Acts as a transcriptional modulator for ESR1 (PubMed:23874500).
Synonyms:	bA373N18.1; C10orf78; MEI5; MEIR5; RP11-373N18.1

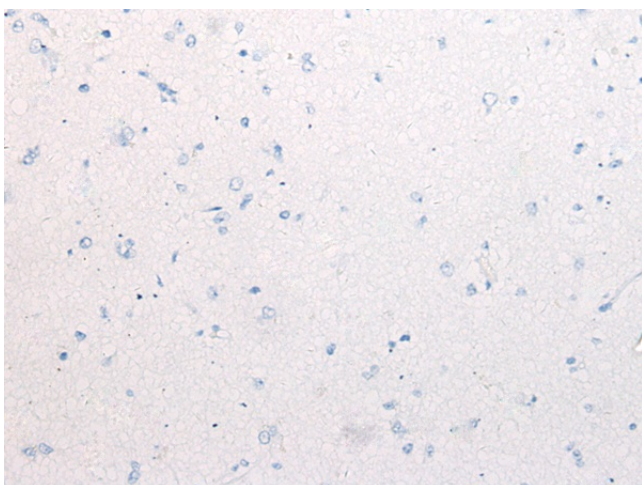


[View online »](#)

## Product images:



Immunohistochemistry of paraffin-embedded Human brain tissue using TA367893 (SFR1 Antibody) at dilution 1/30 (Original magnification: ×200)



Immunohistochemistry of paraffin-embedded Human brain tissue using TA367893 (SFR1 Antibody) at dilution 1/30, treated with synthetic peptide. (Original magnification: ×200)