

Product datasheet for **TA367878**

BRUNOL5 (CELF5) Rabbit Polyclonal Antibody

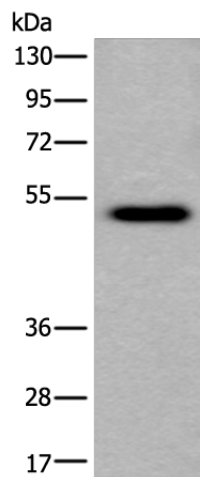
Product data:

Product Type:	Primary Antibodies
Applications:	WB
Recommended Dilution:	WB: 200-1000 WB positive control: A172 cell lysate
Reactivity:	Human
Host:	Rabbit
Isotype:	IgG
Clonality:	Polyclonal
Immunogen:	Synthetic peptide of human CELF5
Formulation:	pH7.4 PBS, 0.05% NaN ₃ , 40% Glycerol
Concentration:	lot specific
Purification:	Antigen affinity purification
Conjugation:	Unconjugated
Storage:	Store at -20°C.
Stability:	1 year
Predicted Protein Size:	52 kDa
Gene Name:	CUGBP, Elav-like family member 5
Database Link:	Entrez Gene 60680 Human Q8N6W0

Background: This gene encodes a member of the the CELF/BRUNOL protein family, which contain two N-terminal RNA recognition motif (RRM) domains, one C-terminal RRM domain, and a divergent segment of 160-230 aa between the second and third RRM domains. Members of this protein family regulate pre-mRNA alternative splicing and may also be involved in mRNA editing and translation. Alternatively spliced transcript variants have been found for this gene.

Synonyms: 4930565A21Rik; Brunol5; RGD1565016


[View online »](#)

Product images:


Gel: 8%SDS-PAGE
 Lysate: 40 µg
 Lane: A172 cell lysate
 Primary antibody: TA367878 (CELF5 Antibody) at dilution 1/300
 Secondary antibody: Goat anti rabbit IgG at 1/8000 dilution
 Exposure time: 1 minute