

## Product datasheet for **TA367874S**

### **BORA Rabbit Polyclonal Antibody**

#### **Product data:**

Product Type:	Primary Antibodies
Applications:	IHC, WB
Recommended Dilution:	WB: 500-2000 WB positive control: K562 and Hela cell lysates IHC: 50-300 Positive control: Human liver cancer Predicted cell location: Cytoplasm
Reactivity:	Human
Host:	Rabbit
Isotype:	IgG
Clonality:	Polyclonal
Immunogen:	Synthetic peptide of human BORA
Formulation:	pH7.4 PBS, 0.05% NaN <sub>3</sub> , 40% Glycerol
Purification:	Antigen affinity purification
Conjugation:	Unconjugated
Storage:	Store at -20°C.
Stability:	1 year
Predicted Protein Size:	61 kDa
Gene Name:	bora, aurora kinase A activator
Database Link:	<a href="#">Entrez Gene 79866 Human Q6PGQ7</a>



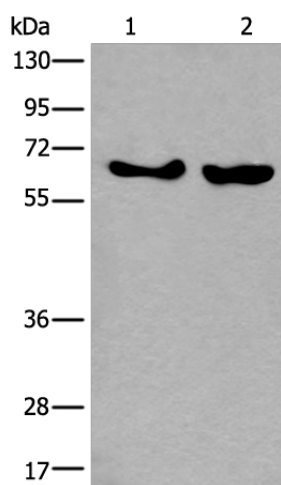
[View online »](#)

**Background:**

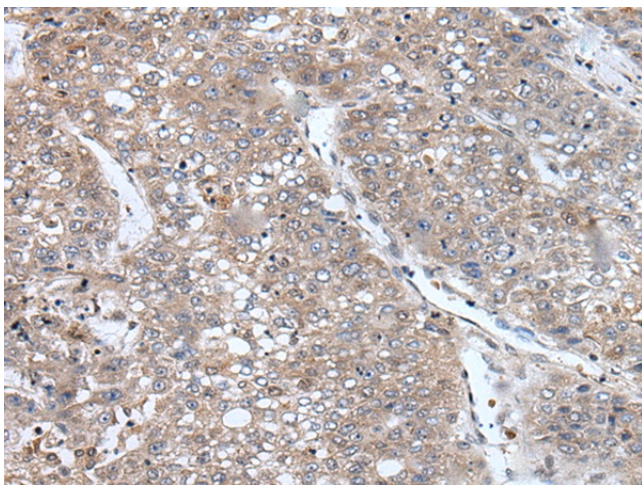
Aurora related kinase-1 (ARK-1) is a centrosome-associated serine/threonine kinase that regulates centrosome separation, bipolar spindle assembly and chromosome segregation during mitosis. Bora (protein aurora borealis) is a 559 amino acid protein that activates ARK-1. Bora is localized to the nucleus until mitosis is initiated, when it then translocates to the cytoplasm. This translocation is dependent on activated Cdc2, which releases Bora to bind and activate ARK-1 in the cytoplasm. Plk (polo-like kinase) interacts with Bora to control the accessibility of its activation loop for phosphorylation and activation on its N-terminus by ARK-1. It is through this mechanism that Bora and ARK-1 control cellular mitotic entry. Downregulation of the gene encoding Bora results in multipolar spindles in mitosis, a phenomenon that is also observed when ARK-1 function is blocked.

**Synonyms:**

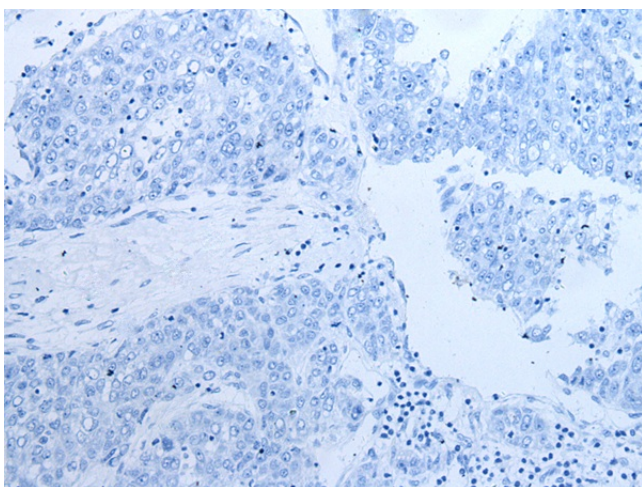
6720463M24Rik; AI317232; RGD1309522

**Product images:**

Gel: 8%SDS-PAGE  
Lysate: 40  $\mu$ g  
Lane 1-2: K562 and Hela cell lysates  
Primary antibody: [TA367874] (BORA Antibody) at dilution 1/800  
Secondary antibody: Goat anti rabbit IgG at 1/8000 dilution  
Exposure time: 1 minute



Immunohistochemistry of paraffin-embedded Human liver cancer tissue using [TA367874] (BORA Antibody) at dilution 1/105 (Original magnification:  $\times$ 200)



Immunohistochemistry of paraffin-embedded Human liver cancer tissue using [TA367874] (BORA Antibody) at dilution 1/105, treated with synthetic peptide. (Original magnification: ×200)