

Product datasheet for **TA367870**

BMP2 Rabbit Polyclonal Antibody

Product data:

Product Type:	Primary Antibodies
Applications:	IHC, WB
Recommended Dilution:	WB: 200-1000 WB positive control: Hela, HepG2, 293T cell lysates IHC: 50-100 Positive control: Human liver cancer Predicted cell location: Secreted
Reactivity:	Human
Host:	Rabbit
Isotype:	IgG
Clonality:	Polyclonal
Immunogen:	Synthetic peptide of human BMP2
Formulation:	pH7.4 PBS, 0.05% NaN ₃ , 40% Glycerol
Concentration:	lot specific
Purification:	Antigen affinity purification
Conjugation:	Unconjugated
Storage:	Store at -20°C.
Stability:	1 year
Predicted Protein Size:	45 kDa
Gene Name:	bone morphogenetic protein 2
Database Link:	Entrez Gene 650 Human P12643



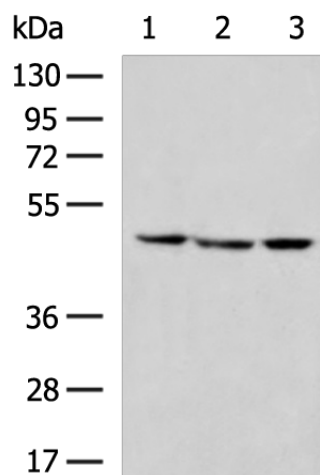
[View online »](#)

Background:

This gene encodes a secreted ligand of the TGF-beta (transforming growth factor-beta) superfamily of proteins. Ligands of this family bind various TGF-beta receptors leading to recruitment and activation of SMAD family transcription factors that regulate gene expression. The encoded preproprotein is proteolytically processed to generate each subunit of the disulfide-linked homodimer, which plays a role in bone and cartilage development. Duplication of a regulatory region downstream of this gene causes a form of brachydactyly characterized by a malformed index finger and second toe in human patients.

Synonyms:

BMP-2; BMP-2A; BMP2A

Product images:

Gel: 8%SDS-PAGE

Lysate: 40 µg

Lane 1-3: HepG2

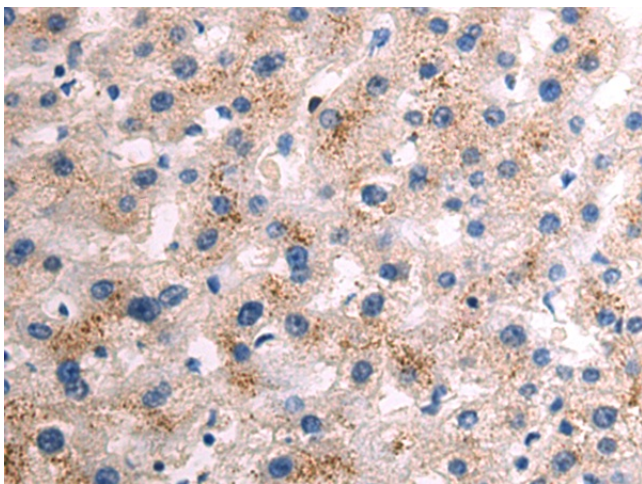
HepG2

293T cell lysates

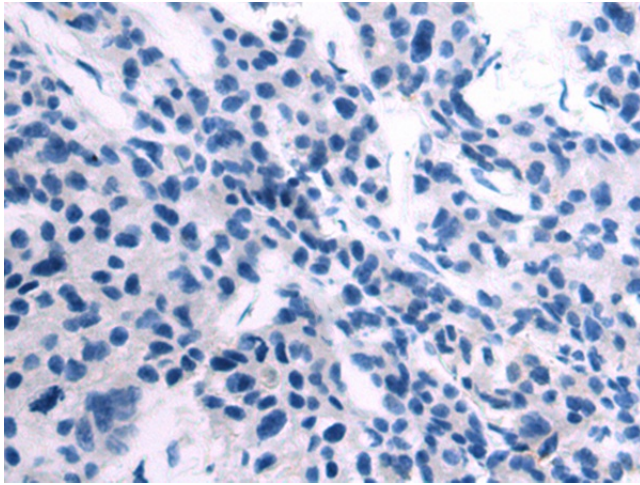
Primary antibody: TA367870 (BMP2 Antibody) at dilution 1/200

Secondary antibody: Goat anti rabbit IgG at 1/5000 dilution

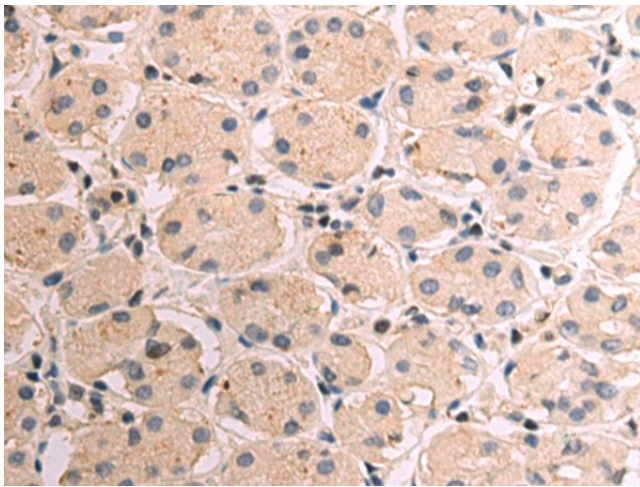
Exposure time: 1 minute



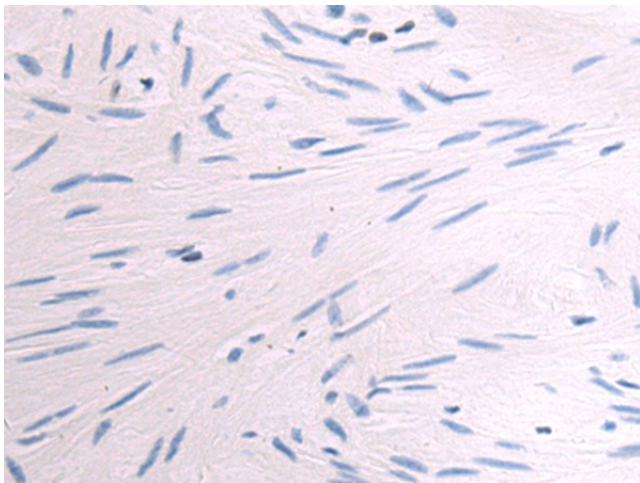
Immunohistochemistry of paraffin-embedded Human liver cancer tissue using TA367870 (BMP2 Antibody) at dilution 1/50 (Original magnification: ×200)



Immunohistochemistry of paraffin-embedded Human liver cancer tissue using TA367870 (BMP2 Antibody) at dilution 1/50, treated with synthetic peptide. (Original magnification: $\times 200$)



Immunohistochemistry of paraffin-embedded Human esophagus cancer tissue using TA367870 (BMP2 Antibody) at dilution 1/50 (Original magnification: $\times 200$)



Immunohistochemistry of paraffin-embedded Human esophagus cancer tissue using TA367870 (BMP2 Antibody) at dilution 1/50, treated with synthetic peptide. (Original magnification: $\times 200$)