

Product datasheet for **TA367862S**

beta II Tubulin (TUBB2A) Rabbit Polyclonal Antibody

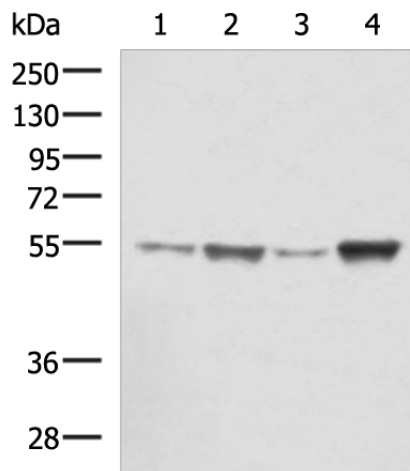
Product data:

Product Type:	Primary Antibodies
Applications:	IHC, WB
Recommended Dilution:	WB: 500-2000 WB positive control: HepG2, Jurkat, HeLa, NIH/3T3 cell lysates IHC: 50-100 Positive control: Human liver cancer Predicted cell location: Cytoplasm
Reactivity:	Human, Mouse, Rat
Host:	Rabbit
Isotype:	IgG
Clonality:	Polyclonal
Immunogen:	Synthetic peptide of human TUBB2A
Formulation:	pH7.4 PBS, 0.05% NaN ₃ , 40% Glycerol
Purification:	Antigen affinity purification
Conjugation:	Unconjugated
Storage:	Store at -20°C.
Stability:	1 year
Predicted Protein Size:	50 kDa
Gene Name:	tubulin beta 2A class IIa
Database Link:	Entrez Gene 7280 Human Q13885
Background:	Microtubules, key participants in processes such as mitosis and intracellular transport, are composed of heterodimers of alpha- and beta-tubulins. The protein encoded by this gene is a beta-tubulin. Defects in this gene are associated with complex cortical dysplasia with other brain malformations-5. Two transcript variants encoding distinct isoforms have been found for this gene.
Synonyms:	dj40E16.7; TUBB; TUBB2; TUBB2B

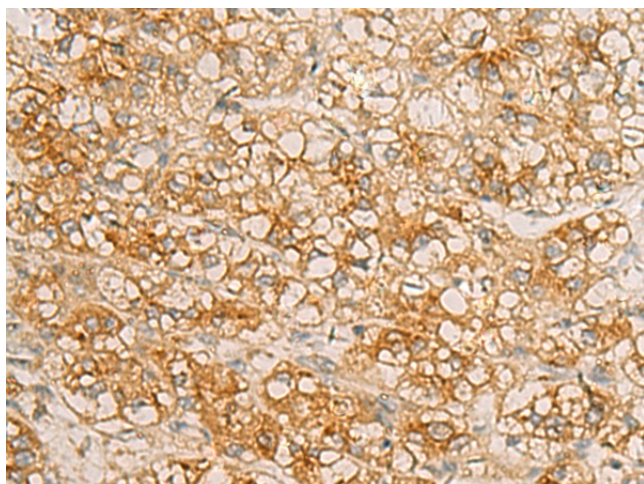


[View online »](#)

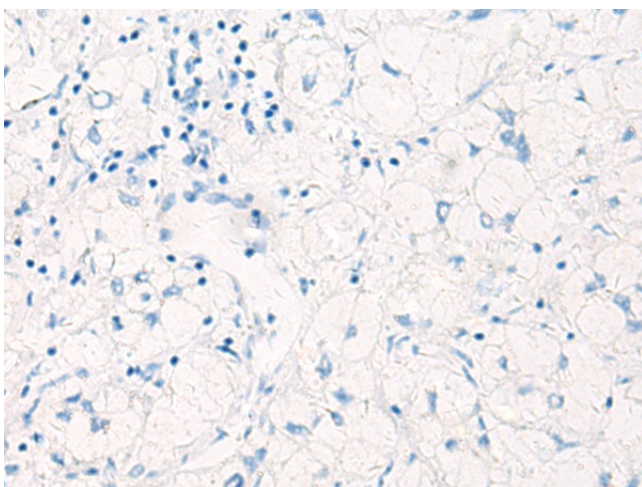
Product images:



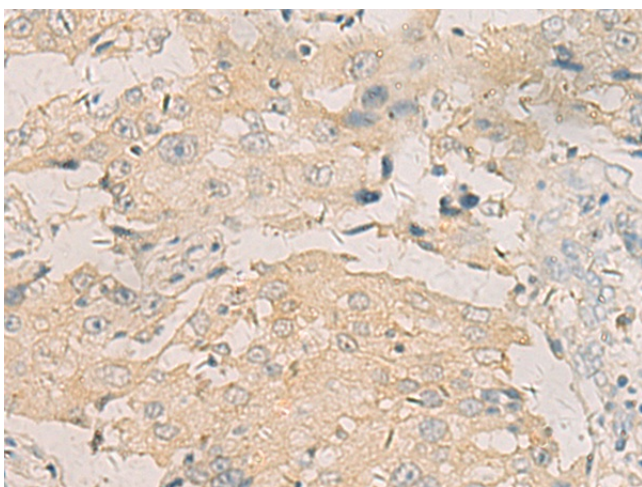
Gel: 8%SDS-PAGE
 Lysate: 40 µg
 Lane 1-4: HepG2
 Jurkat
 HeLa
 NIH/3T3 cell lysates
 Primary antibody: [TA367862] (TUBB2A Antibody)
 at dilution 1/900
 Secondary antibody: Goat anti rabbit IgG at
 1/5000 dilution
 Exposure time: 10 seconds



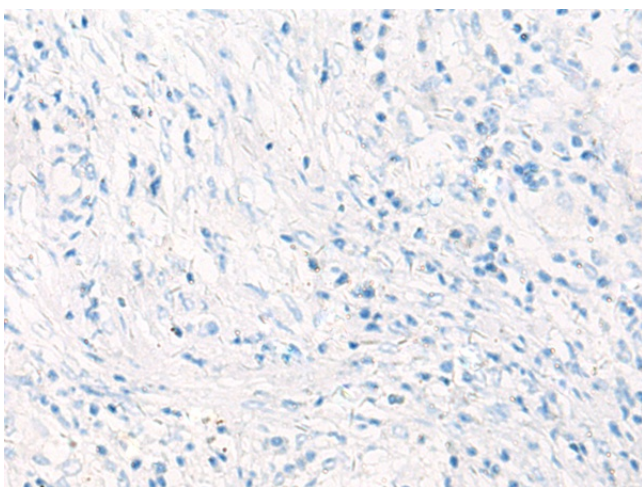
Immunohistochemistry of paraffin-embedded
 Human liver cancer tissue using [TA367862]
 (TUBB2A Antibody) at dilution 1/40 (Original
 magnification: ×200)



Immunohistochemistry of paraffin-embedded Human liver cancer tissue using [TA367862] (TUBB2A Antibody) at dilution 1/40, treated with synthetic peptide. (Original magnification: $\times 200$)



Immunohistochemistry of paraffin-embedded Human breast cancer tissue using [TA367862] (TUBB2A Antibody) at dilution 1/40 (Original magnification: $\times 200$)



Immunohistochemistry of paraffin-embedded Human breast cancer tissue using [TA367862] (TUBB2A Antibody) at dilution 1/40, treated with synthetic peptide. (Original magnification: $\times 200$)