

Product datasheet for **TA367861**

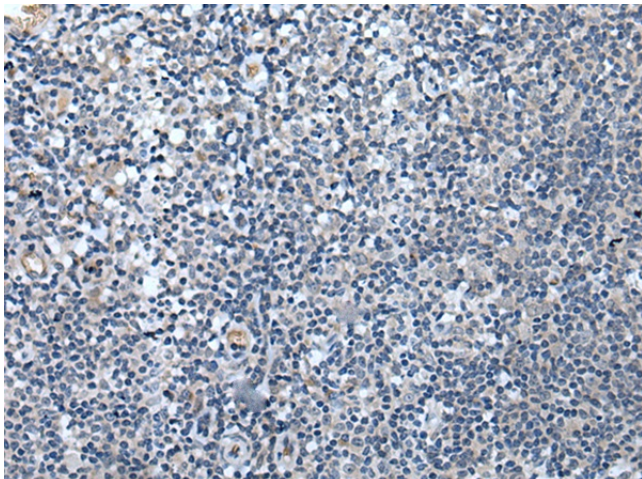
beta 1 Spectrin (SPTB) Rabbit Polyclonal Antibody

Product data:

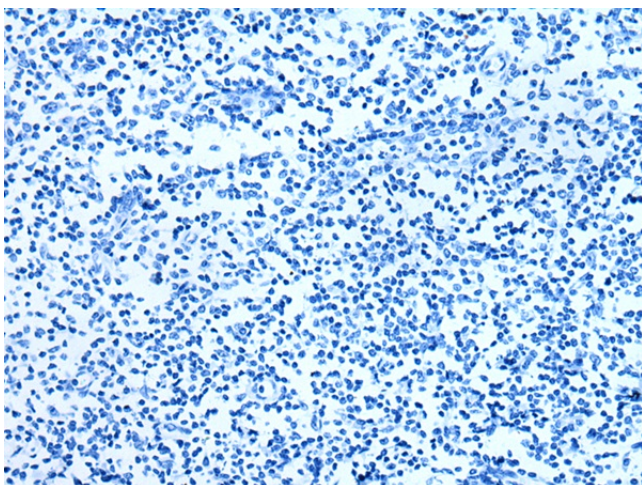
Product Type:	Primary Antibodies
Applications:	IHC
Recommended Dilution:	IHC: 25-100 Positive control: Human tonsil Predicted cell location: Cytoplasm
Reactivity:	Human
Host:	Rabbit
Isotype:	IgG
Clonality:	Polyclonal
Immunogen:	Synthetic peptide of human SPTB
Formulation:	pH7.4 PBS, 0.05% NaN ₃ , 40% Glycerol
Concentration:	lot specific
Purification:	Antigen affinity purification
Conjugation:	Unconjugated
Storage:	Store at -20°C.
Stability:	1 year
Gene Name:	spectrin beta, erythrocytic
Database Link:	Entrez Gene 6710 Human P11277
Background:	This locus encodes a member of the spectrin gene family. Spectrin proteins, along with ankyrin, play a role in cell membrane organization and stability. The protein encoded by this locus functions in stability of erythrocyte membranes, and mutations in this gene have been associated with spherocytosis type 2, hereditary elliptocytosis, and neonatal hemolytic anemia. Alternatively spliced transcript variants have been described.
Synonyms:	EL3; HS2; HSPTB1; SPH2; SPTB1



[View online »](#)

Product images:

Immunohistochemistry of paraffin-embedded Human tonsil tissue using TA367861 (SPTB Antibody) at dilution 1/40 (Original magnification: ×200)



Immunohistochemistry of paraffin-embedded Human tonsil tissue using TA367861 (SPTB Antibody) at dilution 1/40, treated with synthetic peptide. (Original magnification: ×200)