

## Product datasheet for **TA367858**

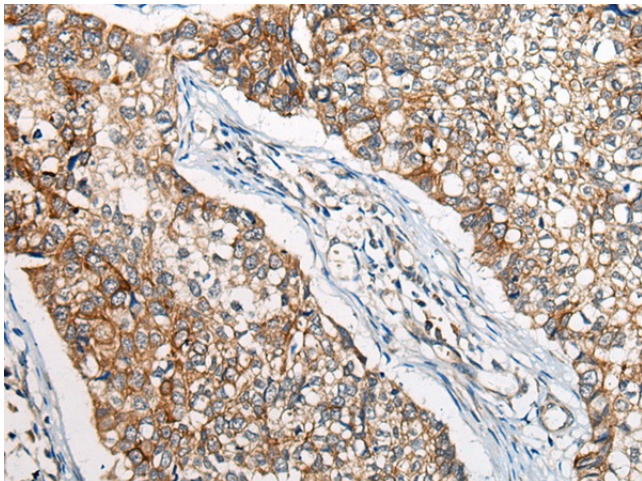
### **BBS12 Rabbit Polyclonal Antibody**

#### **Product data:**

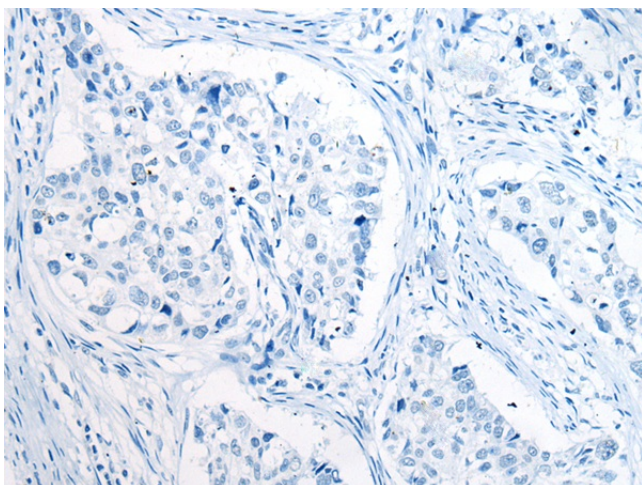
Product Type:	Primary Antibodies
Applications:	IHC
Recommended Dilution:	IHC: 40-200 Positive control: Human lung cancer Predicted cell location: Cytoplasm and Cell membrane
Reactivity:	Human
Host:	Rabbit
Isotype:	IgG
Clonality:	Polyclonal
Immunogen:	Synthetic peptide of human BBS12
Formulation:	pH7.4 PBS, 0.05% NaN <sub>3</sub> , 40% Glycerol
Concentration:	lot specific
Purification:	Antigen affinity purification
Conjugation:	Unconjugated
Storage:	Store at -20°C.
Stability:	1 year
Gene Name:	Bardet-Biedl syndrome 12
Database Link:	<a href="#">Entrez Gene 166379 Human Q6ZW61</a>
Background:	The protein encoded by this gene is part of a complex that is involved in membrane trafficking. The encoded protein is a molecular chaperone that aids in protein folding upon ATP hydrolysis. This protein also plays a role in adipocyte differentiation. Defects in this gene are a cause of Bardet-Biedl syndrome type 12. Two transcript variants encoding the same protein have been found for this gene.
Synonyms:	C4orf24; FLJ35630; FLJ41559



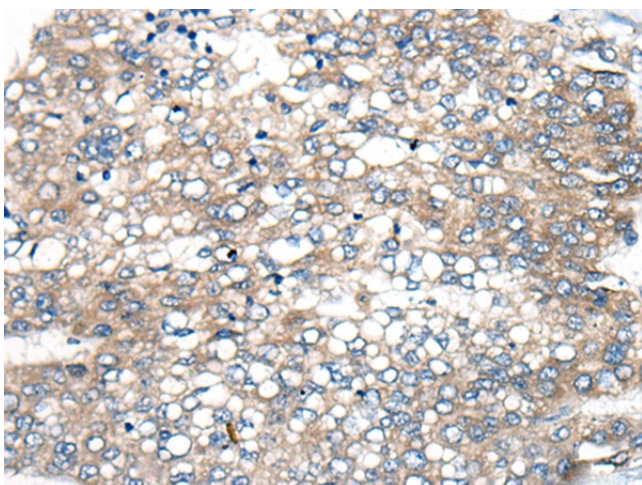
[View online »](#)

**Product images:**

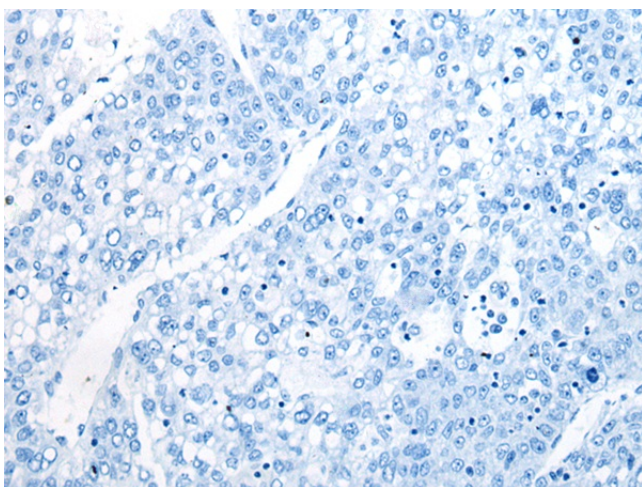
Immunohistochemistry of paraffin-embedded Human lung cancer tissue using TA367858 (BBS12 Antibody) at dilution 1/50 (Original magnification:  $\times 200$ )



Immunohistochemistry of paraffin-embedded Human lung cancer tissue using TA367858 (BBS12 Antibody) at dilution 1/50, treated with synthetic peptide. (Original magnification:  $\times 200$ )



Immunohistochemistry of paraffin-embedded Human liver cancer tissue using TA367858 (BBS12 Antibody) at dilution 1/50 (Original magnification:  $\times 200$ )



Immunohistochemistry of paraffin-embedded Human liver cancer tissue using TA367858 (BBS12 Antibody) at dilution 1/50, treated with synthetic peptide. (Original magnification:  $\times 200$ )