

## Product datasheet for **TA367855**

### **BAGE2 Rabbit Polyclonal Antibody**

#### **Product data:**

Product Type:	Primary Antibodies
Applications:	IHC, WB
Recommended Dilution:	WB: 200-1000 WB positive control: A375 cell lysate IHC: 25-100 Positive control: Human liver cancer Predicted cell location: Secreted
Reactivity:	Human
Host:	Rabbit
Isotype:	IgG
Clonality:	Polyclonal
Immunogen:	Synthetic peptide of human BAGE2
Formulation:	pH7.4 PBS, 0.05% NaN <sub>3</sub> , 40% Glycerol
Concentration:	lot specific
Purification:	Antigen affinity purification
Conjugation:	Unconjugated
Storage:	Store at -20°C.
Stability:	1 year
Predicted Protein Size:	12 kDa
Gene Name:	B melanoma antigen family member 2
Database Link:	<a href="#">Entrez Gene 85319 Human</a> <a href="#">Q86Y30</a>



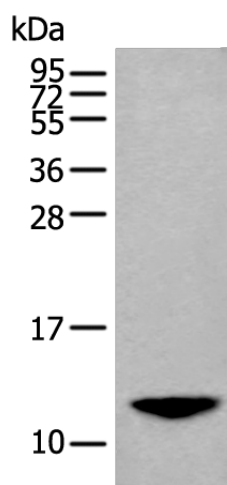
[View online »](#)

**Background:**

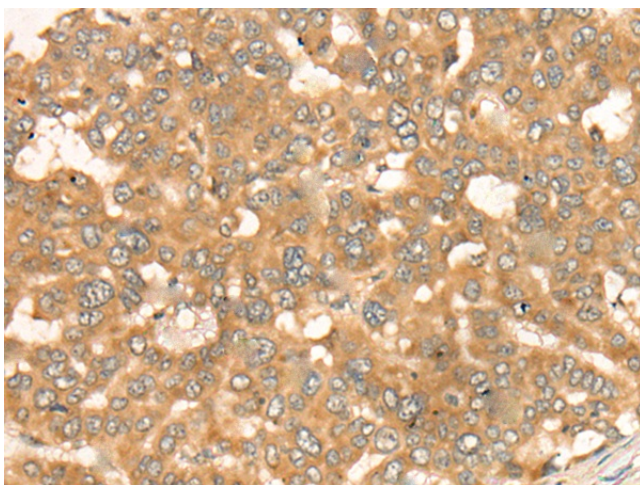
Members of the BAGE gene family encode antigens that are recognized by cytotoxic T lymphocytes and are also known as CT (cancer/testis) antigens. Generated by juxtacentromeric shuffling of the MLL3 gene, the ancestral BAGE gene was expanded by acrocentric exchanges and/or juxtacentromeric movements. Generally, BAGE proteins are silent in all normal tissues with the exception of testis. BAGE2 and BAGE 3 (B melanoma antigen 2 and 3, respectively), also known as Cancer/testis antigen 2.2 and 2.3 (respectively), are 109 amino acid secreted proteins that are expressed in 22% of melanomas, lung and bladder carcinomas, and are also expressed in normal testis tissue. Like the genes encoding MAGE proteins, BAGE genes are most likely silenced by DNA methylation and/or chromatin compaction in normal tissues other than testis.

**Synonyms:**

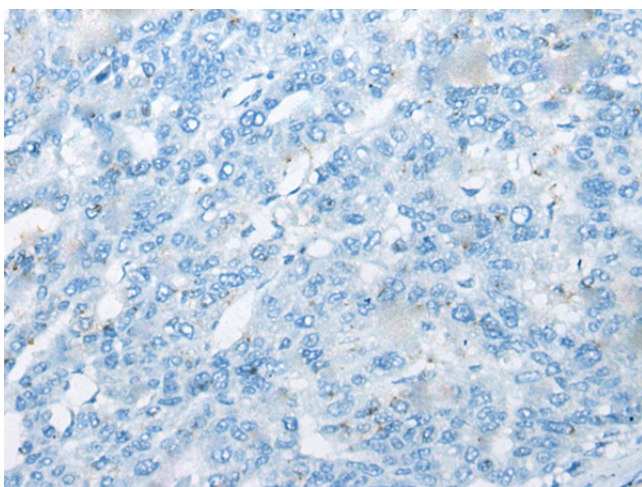
CT2.2

**Product images:**


Gel: 12%SDS-PAGE  
Lysate: 40 µg  
Lane: A375 cell lysate  
Primary antibody: TA367855 (BAGE2 Antibody) at dilution 1/200  
Secondary antibody: Goat anti rabbit IgG at 1/8000 dilution  
Exposure time: 90 seconds



Immunohistochemistry of paraffin-embedded Human liver cancer tissue using TA367855 (BAGE2 Antibody) at dilution 1/20 (Original magnification: ×200)



Immunohistochemistry of paraffin-embedded Human liver cancer tissue using TA367855 (BAGE2 Antibody) at dilution 1/20, treated with synthetic peptide. (Original magnification:  $\times 200$ )