

Product datasheet for **TA367851**

B4GAT1 Rabbit Polyclonal Antibody

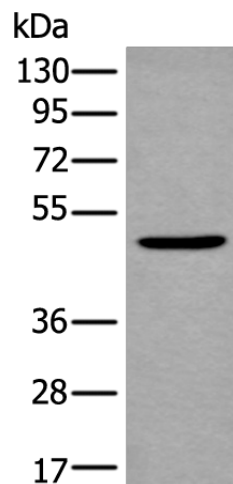
Product data:

Product Type:	Primary Antibodies
Applications:	IHC, WB
Recommended Dilution:	WB: 1000-5000 WB positive control: Mouse brain tissue lysate IHC: 50-300 Positive control: Human liver cancer Predicted cell location: Cell membrane
Reactivity:	Human, Mouse
Host:	Rabbit
Isotype:	IgG
Clonality:	Polyclonal
Immunogen:	Synthetic peptide of human B4GAT1
Formulation:	pH7.4 PBS, 0.05% NaN ₃ , 40% Glycerol
Concentration:	lot specific
Purification:	Antigen affinity purification
Conjugation:	Unconjugated
Storage:	Store at -20°C.
Stability:	1 year
Predicted Protein Size:	47 kDa
Gene Name:	beta-1,4-glucuronyltransferase 1
Database Link:	Entrez Gene 11041 Human O43505
Background:	This gene encodes a member of the beta-1,3-N-acetylglucosaminyltransferase family. This enzyme is a type II transmembrane protein. It is essential for the synthesis of poly-N-acetyllactosamine, a determinant for the blood group i antigen.

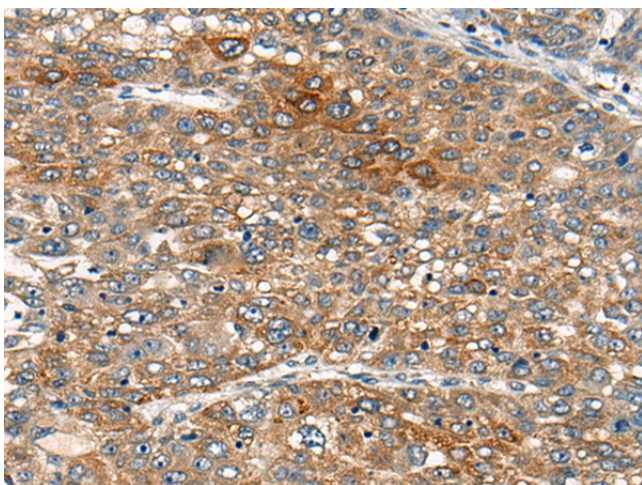


[View online »](#)

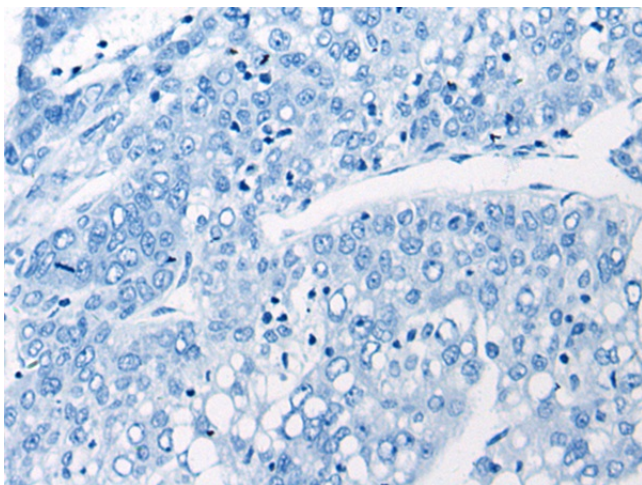
Product images:



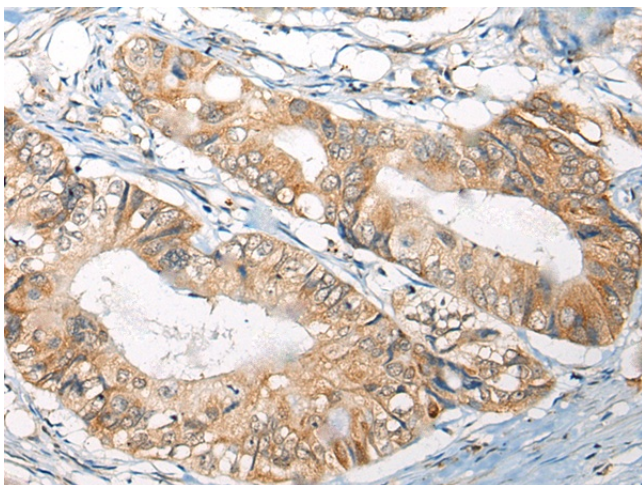
Gel: 8%SDS-PAGE
Lysate: 40 μ g
Lane: Mouse brain tissue lysate
Primary antibody: TA367851 (B4GAT1 Antibody) at dilution 1/800
Secondary antibody: Goat anti rabbit IgG at 1/8000 dilution
Exposure time: 5 seconds



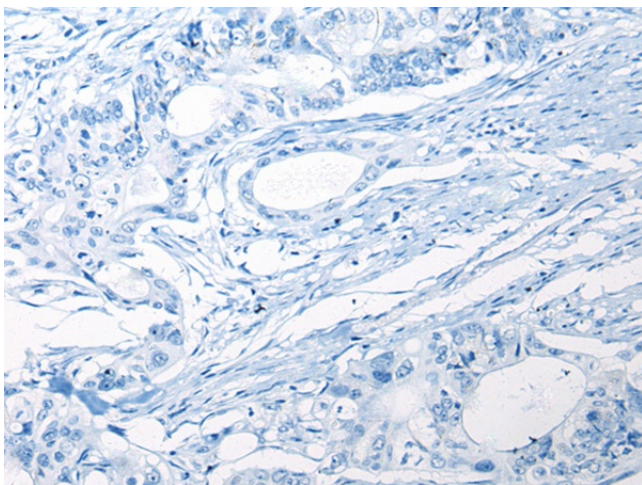
Immunohistochemistry of paraffin-embedded Human liver cancer tissue using TA367851 (B4GAT1 Antibody) at dilution 1/110 (Original magnification: x200)



Immunohistochemistry of paraffin-embedded Human liver cancer tissue using TA367851 (B4GAT1 Antibody) at dilution 1/110, treated with synthetic peptide. (Original magnification: ×200)



Immunohistochemistry of paraffin-embedded Human colorectal cancer tissue using TA367851 (B4GAT1 Antibody) at dilution 1/110 (Original magnification: ×200)



Immunohistochemistry of paraffin-embedded Human colorectal cancer tissue using TA367851 (B4GAT1 Antibody) at dilution 1/110, treated with synthetic peptide. (Original magnification: ×200)