

## Product datasheet for **TA367844S**

### UTP18 Rabbit Polyclonal Antibody

#### Product data:

Product Type:	Primary Antibodies
Applications:	IHC
Recommended Dilution:	IHC: 10-50 Positive control: Human ovarian cancer Predicted cell location: Nucleus
Reactivity:	Human, Mouse
Host:	Rabbit
Isotype:	IgG
Clonality:	Polyclonal
Immunogen:	Synthetic peptide of human UTP18
Formulation:	pH7.4 PBS, 0.05% NaN <sub>3</sub> , 40% Glycerol
Purification:	Antigen affinity purification
Conjugation:	Unconjugated
Storage:	Store at -20°C.
Stability:	1 year
Gene Name:	UTP18, small subunit processome component
Database Link:	<a href="#">Entrez Gene 51096 Human Q9Y5J1</a>

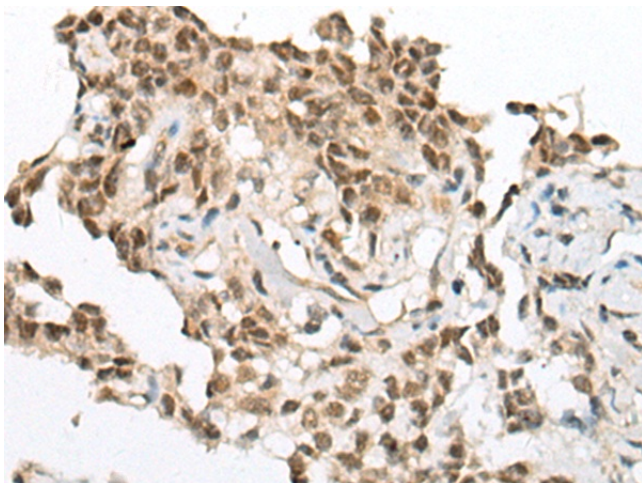
**Background:** WD-repeats are motifs that are found in a variety of proteins and are characterized by a conserved core of 40-60 amino acids that commonly form a tertiary propeller structure. While proteins that contain WD-repeats participate in a wide range of cellular functions, they are generally involved in regulatory mechanisms concerning chromatin assembly, cell cycle control, signal transduction, RNA processing, apoptosis and vesicular trafficking. UTP18 (U3 small nucleolar RNA-associated protein 18), also known as WDR50 (WD repeat-containing protein 50), is a 556 amino acid protein that localizes to the nucleus, contains six WD repeats and is thought to be involved in the processing of pre-18S ribosomal RNA. The gene encoding UTP18 maps to human chromosome 17, which comprises over 2.5% of the human genome and encodes over 1,200 genes.



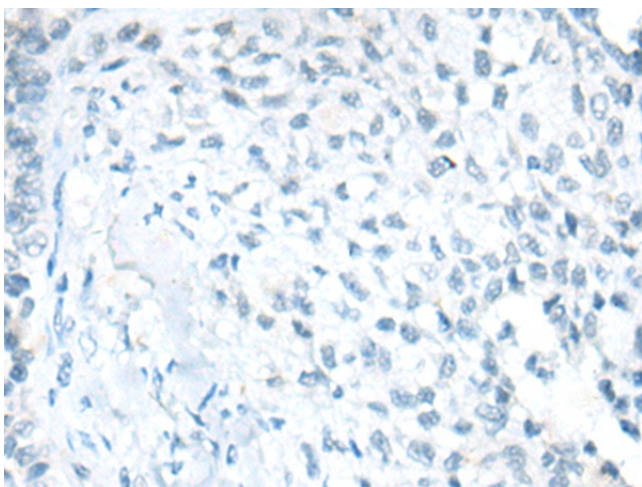
[View online »](#)

Synonyms: CGI-48; WDR50

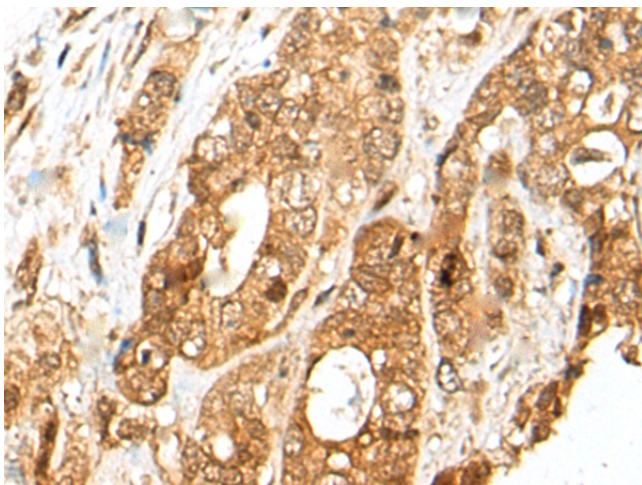
**Product images:**



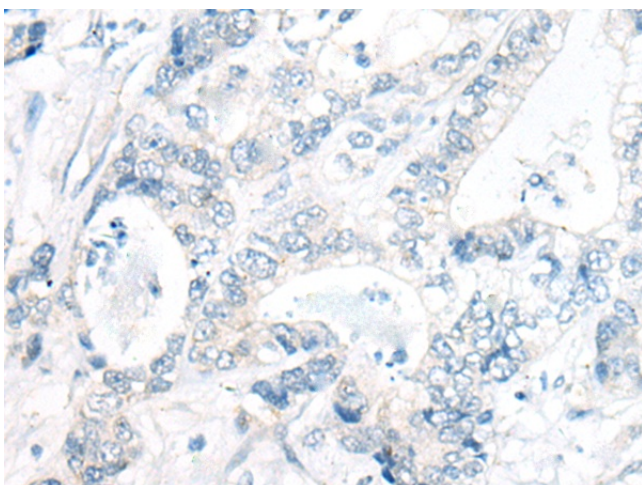
Immunohistochemistry of paraffin-embedded Human ovarian cancer tissue using [TA367844] (UTP18 Antibody) at dilution 1/25 (Original magnification:  $\times 200$ )



Immunohistochemistry of paraffin-embedded Human ovarian cancer tissue using [TA367844] (UTP18 Antibody) at dilution 1/25, treated with synthetic peptide. (Original magnification:  $\times 200$ )



Immunohistochemistry of paraffin-embedded Human gastric cancer tissue using [TA367844] (UTP18 Antibody) at dilution 1/25 (Original magnification:  $\times 200$ )



Immunohistochemistry of paraffin-embedded Human gastric cancer tissue using [TA367844] (UTP18 Antibody) at dilution 1/25, treated with synthetic peptide. (Original magnification:  $\times 200$ )