

Product datasheet for **TA367840S**

URB1 Rabbit Polyclonal Antibody

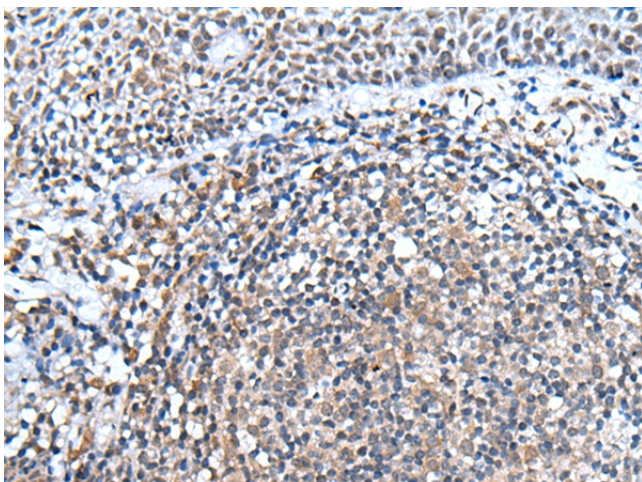
Product data:

Product Type:	Primary Antibodies
Applications:	IHC
Recommended Dilution:	IHC: 20-100 Positive control: Human tonsil Predicted cell location: Nucleus
Reactivity:	Human
Host:	Rabbit
Isotype:	IgG
Clonality:	Polyclonal
Immunogen:	Synthetic peptide of human URB1
Formulation:	pH7.4 PBS, 0.05% NaN ₃ , 40% Glycerol
Purification:	Antigen affinity purification
Conjugation:	Unconjugated
Storage:	Store at -20°C.
Stability:	1 year
Gene Name:	URB1 ribosome biogenesis 1 homolog (S. cerevisiae)
Database Link:	Entrez Gene 9875 Human O60287
Background:	URB1, also named as C21orf108, KIAA0539 and NPA1, is a 2,271 amino acid protein that is homologous to the S. cerevisiae protein URB1 which is a nucleolar protein involved in the normal accumulation of 25S and 5.8S rRNAs and may also play a role in the biosynthesis of the 60S ribosomal unit. Also localized to the nucleolus, human URB1 is thought to have the same functions as S. cerevisiae URB1. The antibody is specific to URB1.
Synonyms:	C21orf108; KIAA0539; NPA1

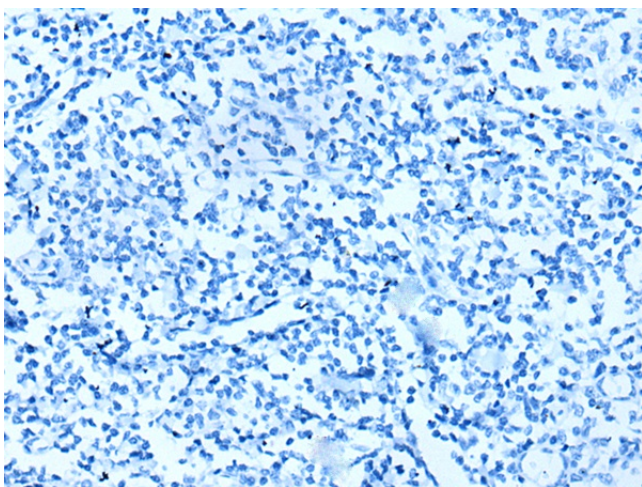


[View online »](#)

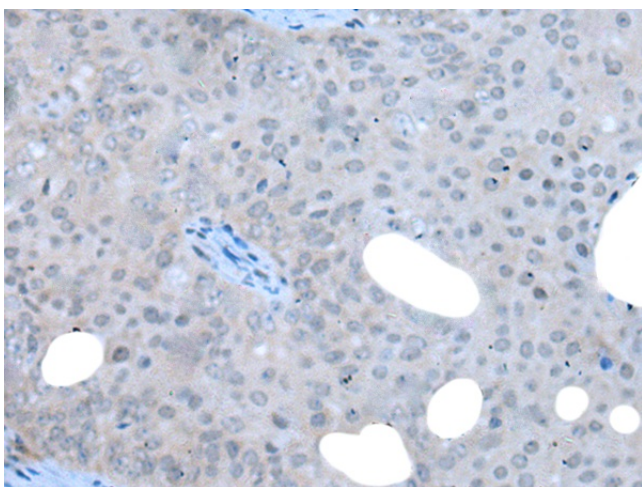
Product images:



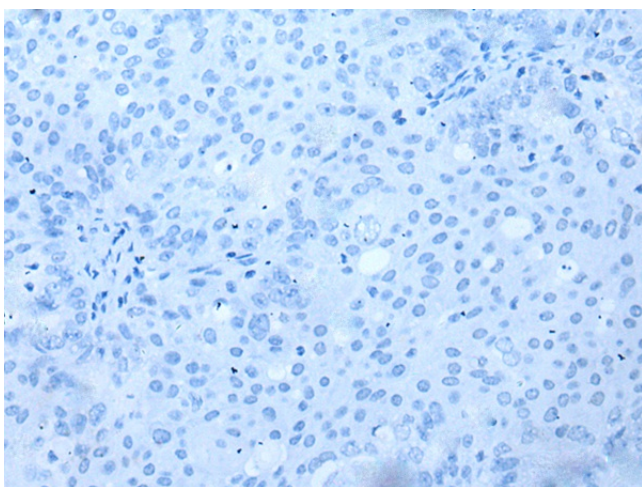
Immunohistochemistry of paraffin-embedded Human tonsil tissue using [TA367840] (URB1 Antibody) at dilution 1/30 (Original magnification: ×200)



Immunohistochemistry of paraffin-embedded Human tonsil tissue using [TA367840] (URB1 Antibody) at dilution 1/30, treated with synthetic peptide. (Original magnification: ×200)



Immunohistochemistry of paraffin-embedded Human ovarian cancer tissue using [TA367840] (URB1 Antibody) at dilution 1/30 (Original magnification: $\times 200$)



Immunohistochemistry of paraffin-embedded Human ovarian cancer tissue using [TA367840] (URB1 Antibody) at dilution 1/30, treated with synthetic peptide. (Original magnification: $\times 200$)