

## Product datasheet for **TA367832S**

### UGCGL2 (UGGT2) Rabbit Polyclonal Antibody

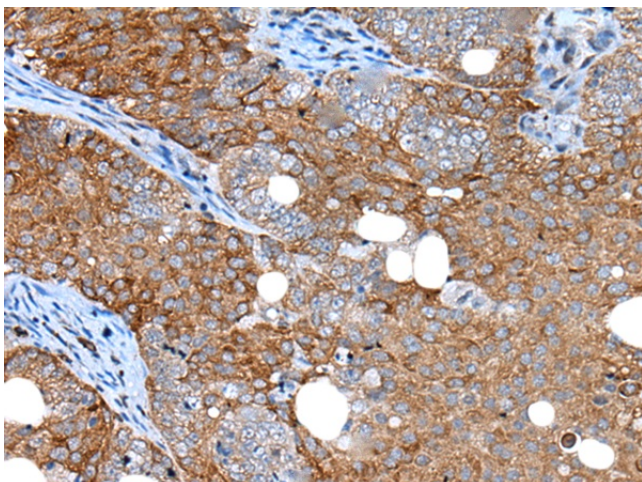
#### Product data:

Product Type:	Primary Antibodies
Applications:	IHC
Recommended Dilution:	IHC: 20-100 Positive control: Human ovarian cancer Predicted cell location: Cytoplasm
Reactivity:	Human
Host:	Rabbit
Isotype:	IgG
Clonality:	Polyclonal
Immunogen:	Synthetic peptide of human UGGT2
Formulation:	pH7.4 PBS, 0.05% NaN <sub>3</sub> , 40% Glycerol
Purification:	Antigen affinity purification
Conjugation:	Unconjugated
Storage:	Store at -20°C.
Stability:	1 year
Gene Name:	UDP-glucose glycoprotein glucosyltransferase 2
Database Link:	<a href="#">Entrez Gene 55757 Human Q9NYU1</a>
Background:	UDP-glucose:glycoprotein glucosyltransferase (UGT) is a soluble protein of the endoplasmic reticulum (ER) that selectively reglucosylates unfolded glycoproteins, thus providing quality control for protein transport out of the ER.
Synonyms:	1810064L21Rik; 3110001A05Rik; 3110027P15Rik; A230065J02Rik; AW047562; Ugcgl2

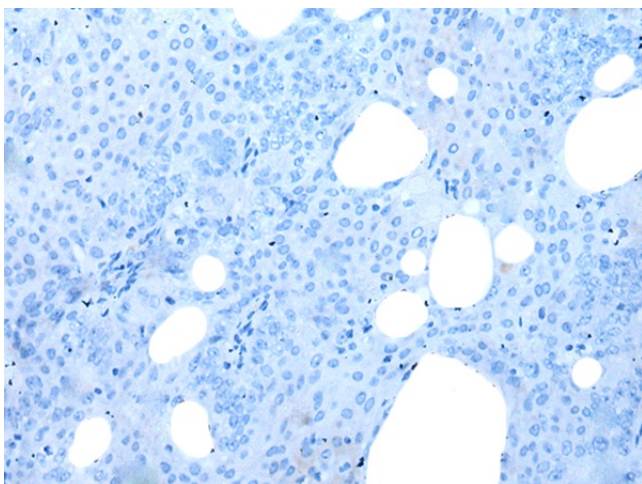


[View online »](#)

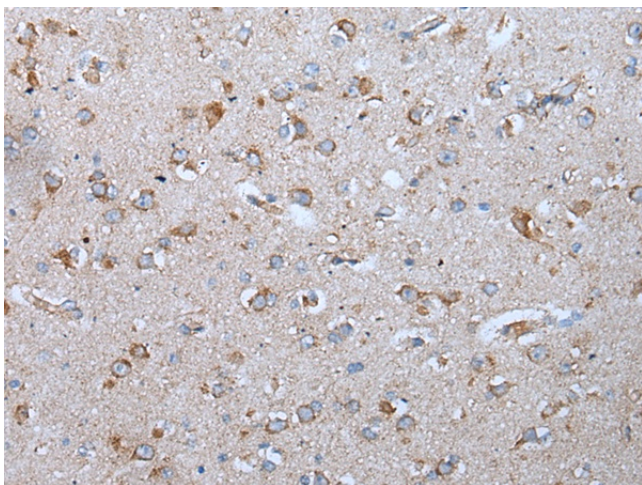
## Product images:



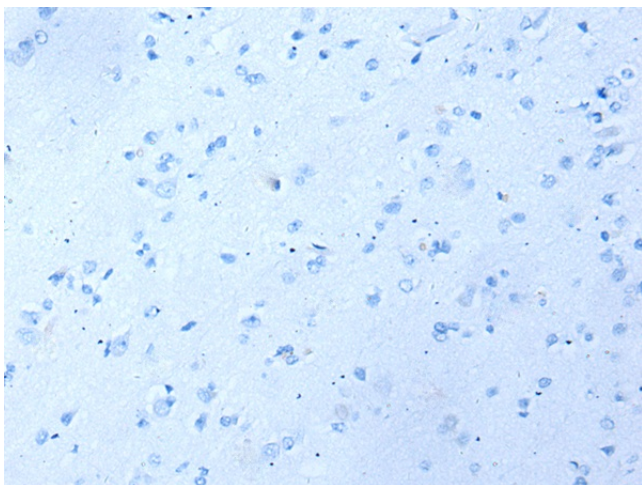
Immunohistochemistry of paraffin-embedded Human ovarian cancer tissue using [TA367832] (UGGT2 Antibody) at dilution 1/20 (Original magnification:  $\times 200$ )



Immunohistochemistry of paraffin-embedded Human ovarian cancer tissue using [TA367832] (UGGT2 Antibody) at dilution 1/20, treated with synthetic peptide. (Original magnification:  $\times 200$ )



Immunohistochemistry of paraffin-embedded Human brain tissue using [TA367832] (UGGT2 Antibody) at dilution 1/20 (Original magnification: ×200)



Immunohistochemistry of paraffin-embedded Human brain tissue using [TA367832] (UGGT2 Antibody) at dilution 1/20, treated with synthetic peptide. (Original magnification: ×200)