

## Product datasheet for **TA367831**

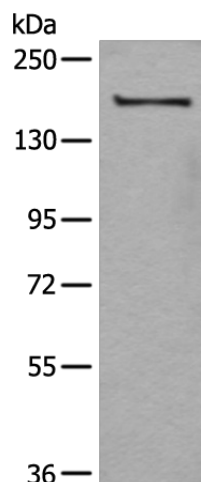
### UGGT (UGGT1) Rabbit Polyclonal Antibody

#### Product data:

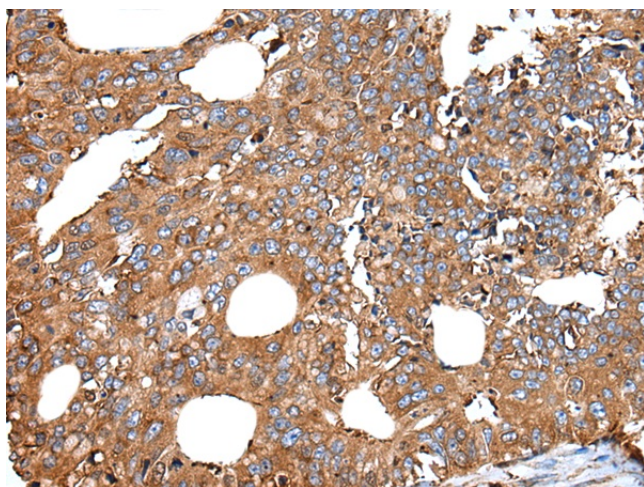
Product Type:	Primary Antibodies
Applications:	IHC, WB
Recommended Dilution:	WB: 200-1000 WB positive control: A172 cell lysate IHC: 25-100 Positive control: Human colorectal cancer Predicted cell location: Cytoplasm
Reactivity:	Human
Host:	Rabbit
Isotype:	IgG
Clonality:	Polyclonal
Immunogen:	Synthetic peptide of human UGGT1
Formulation:	pH7.4 PBS, 0.05% NaN <sub>3</sub> , 40% Glycerol
Concentration:	lot specific
Purification:	Antigen affinity purification
Conjugation:	Unconjugated
Storage:	Store at -20°C.
Stability:	1 year
Predicted Protein Size:	177 kDa
Gene Name:	UDP-glucose glycoprotein glucosyltransferase 1
Database Link:	<a href="#">Entrez Gene 56886 Human Q9NYU2</a>
Background:	UDP-glucose:glycoprotein glucosyltransferase (UGT) is a soluble protein of the endoplasmic reticulum (ER) that selectively reglycosylates unfolded glycoproteins, thus providing quality control for protein transport out of the ER.
Synonyms:	0910001L17Rik; A930007H10Rik; AA589501; AI414429; AI448372; C820010P03Rik; GT; rUGT1; Ugcgl1; Ugggt; UGT1



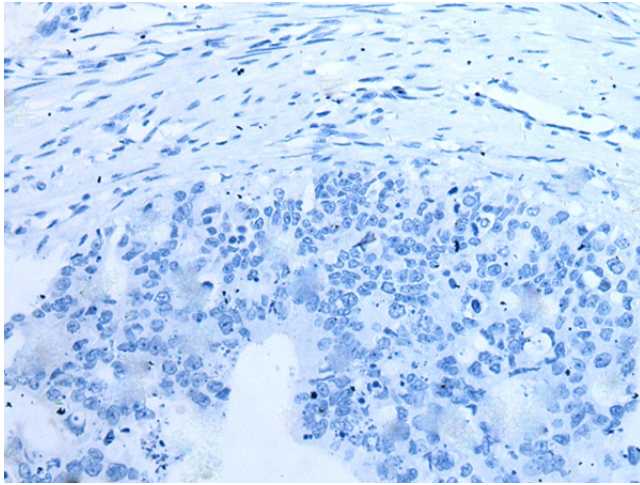
[View online »](#)

**Product images:**

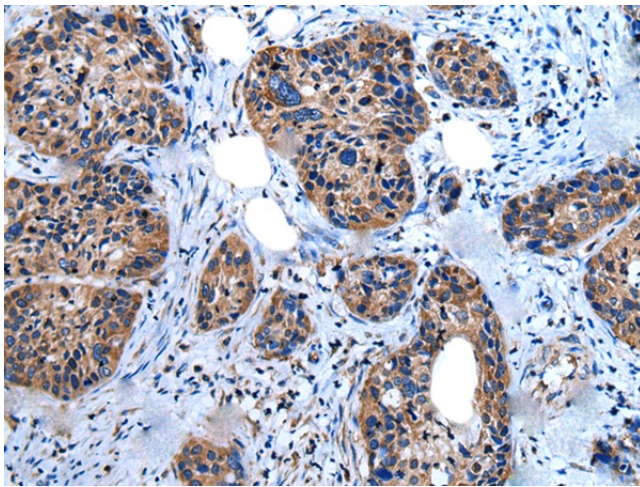
Gel: 6%SDS-PAGE  
Lysate: 40  $\mu$ g  
Lane: A172 cell lysate  
Primary antibody: TA367831 (UGGT1 Antibody) at dilution 1/250  
Secondary antibody: Goat anti rabbit IgG at 1/8000 dilution  
Exposure time: 20 seconds



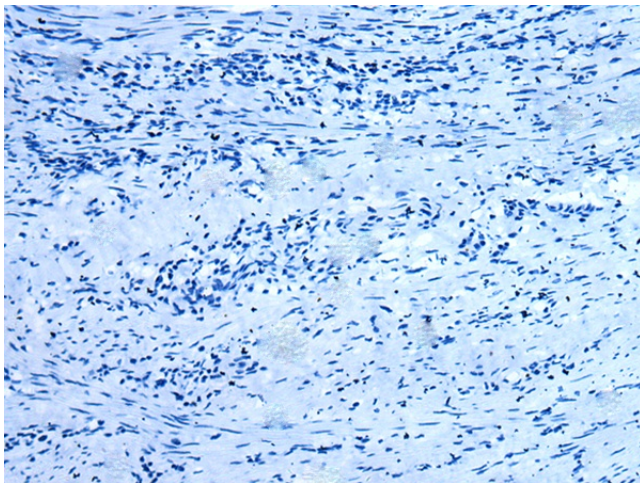
Immunohistochemistry of paraffin-embedded Human colorectal cancer tissue using TA367831 (UGGT1 Antibody) at dilution 1/25 (Original magnification:  $\times$ 200)



Immunohistochemistry of paraffin-embedded Human colorectal cancer tissue using TA367831 (UGGT1 Antibody) at dilution 1/25, treated with synthetic peptide. (Original magnification:  $\times 200$ )



Immunohistochemistry of paraffin-embedded Human cervical cancer tissue using TA367831 (UGGT1 Antibody) at dilution 1/25 (Original magnification:  $\times 200$ )



Immunohistochemistry of paraffin-embedded Human cervical cancer tissue using TA367831 (UGGT1 Antibody) at dilution 1/25, treated with synthetic peptide. (Original magnification:  $\times 200$ )