

Product datasheet for **TA367825**

UBQLN2 Rabbit Polyclonal Antibody

Product data:

Product Type:	Primary Antibodies
Applications:	IHC, WB
Recommended Dilution:	WB: 200-1000 WB positive control: HepG2 cell lysate IHC: 50-200 Positive control: Human colorectal cancer Predicted cell location: Cytoplasm
Reactivity:	Human, Mouse
Host:	Rabbit
Isotype:	IgG
Clonality:	Polyclonal
Immunogen:	Synthetic peptide of human UBQLN2
Formulation:	pH7.4 PBS, 0.05% NaN ₃ , 40% Glycerol
Concentration:	lot specific
Purification:	Antigen affinity purification
Conjugation:	Unconjugated
Storage:	Store at -20°C.
Stability:	1 year
Predicted Protein Size:	66 kDa
Gene Name:	ubiquilin 2
Database Link:	Entrez Gene 29978 Human Q9UHD9

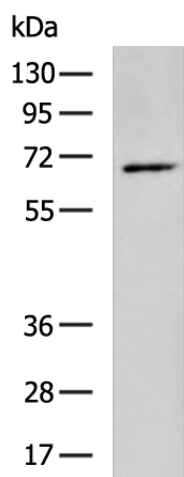
Background: This gene encodes an ubiquitin-like protein (ubiquilin) that shares high degree of similarity with related products in yeast, rat and frog. Ubiquilins contain a N-terminal ubiquitin-like domain and a C-terminal ubiquitin-associated domain. They physically associate with both proteasomes and ubiquitin ligases; and thus, are thought to functionally link the ubiquitination machinery to the proteasome to affect in vivo protein degradation. This ubiquilin has also been shown to bind the ATPase domain of the Hsp70-like Stch protein.



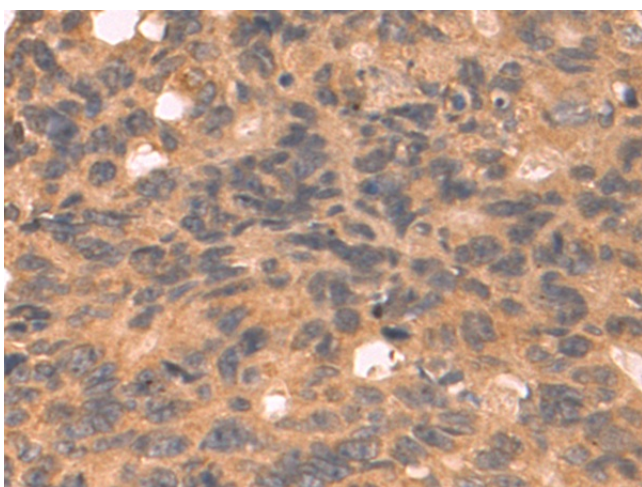
[View online »](#)

Synonyms: Chap1; CHAP1/DSK2; Dsk2; FLJ10167; FLJ56541; hPLIC-2; HRIHFB2157; LIC-2; N4BP4; PLIC-2; PLIC2; RIHFB2157

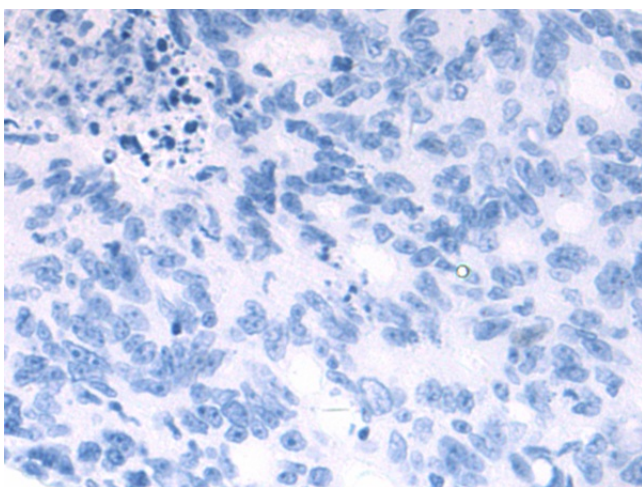
Product images:



Gel: 8%SDS-PAGE
Lysate: 40 μ g
Lane: HepG2 cell lysate
Primary antibody: TA367825 (UBQLN2 Antibody) at dilution 1/250
Secondary antibody: Goat anti rabbit IgG at 1/5000 dilution
Exposure time: 1 minute



Immunohistochemistry of paraffin-embedded Human colorectal cancer tissue using TA367825 (UBQLN2 Antibody) at dilution 1/50 (Original magnification: \times 200)



Immunohistochemistry of paraffin-embedded Human colorectal cancer tissue using TA367825 (UBQLN2 Antibody) at dilution 1/50, treated with synthetic peptide. (Original magnification: $\times 200$)