

Product datasheet for **TA367823S**

UBE2N Rabbit Polyclonal Antibody

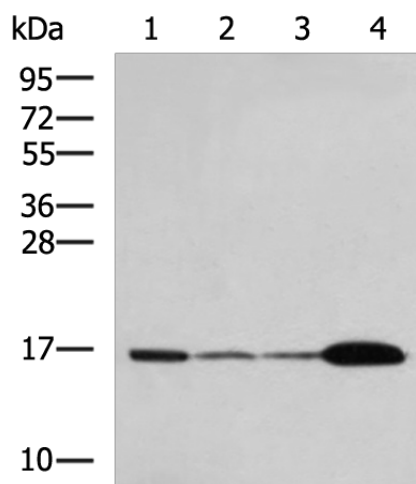
Product data:

Product Type:	Primary Antibodies
Applications:	IHC, WB
Recommended Dilution:	WB: 500-2000 WB positive control: Mouse brain tissue, Hela cell, LNCAP cell, HepG2 cell, Jurkat cell lysates IHC: 50-200 Positive control: Human liver cancer Predicted cell location: Cytoplasm
Reactivity:	Human, Mouse, Rat
Host:	Rabbit
Isotype:	IgG
Clonality:	Polyclonal
Immunogen:	Synthetic peptide of human UBE2N
Formulation:	pH7.4 PBS, 0.05% NaN ₃ , 40% Glycerol
Purification:	Antigen affinity purification
Conjugation:	Unconjugated
Storage:	Store at -20°C.
Stability:	1 year
Predicted Protein Size:	17 kDa
Gene Name:	ubiquitin conjugating enzyme E2 N
Database Link:	Entrez Gene 7334 Human P61088
Background:	The modification of proteins with ubiquitin is an important cellular mechanism for targeting abnormal or short-lived proteins for degradation. Ubiquitination involves at least three classes of enzymes: ubiquitin-activating enzymes, or E1s, ubiquitin-conjugating enzymes, or E2s, and ubiquitin-protein ligases, or E3s. This gene encodes a member of the E2 ubiquitin-conjugating enzyme family. Studies in mouse suggest that this protein plays a role in DNA postreplication repair.
Synonyms:	BLU; MGC8489; MGC131857; UBC13; UbCH-ben

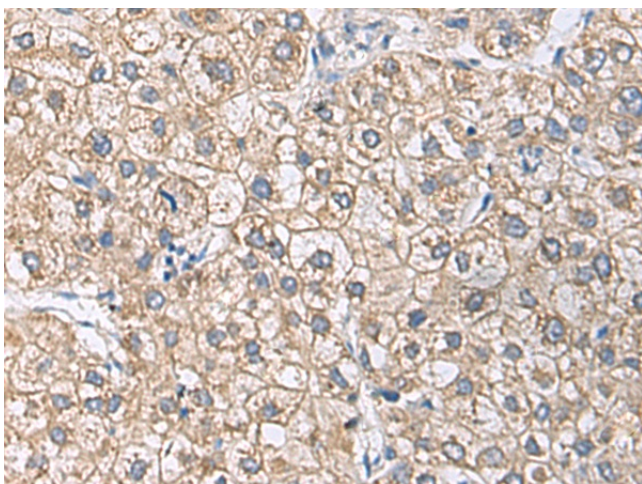


[View online »](#)

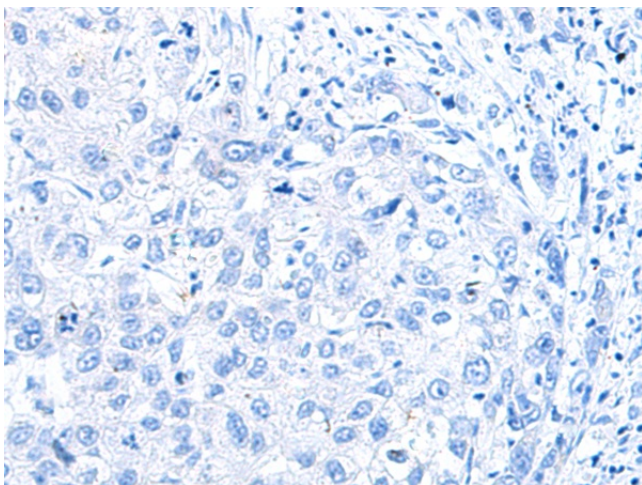
Product images:



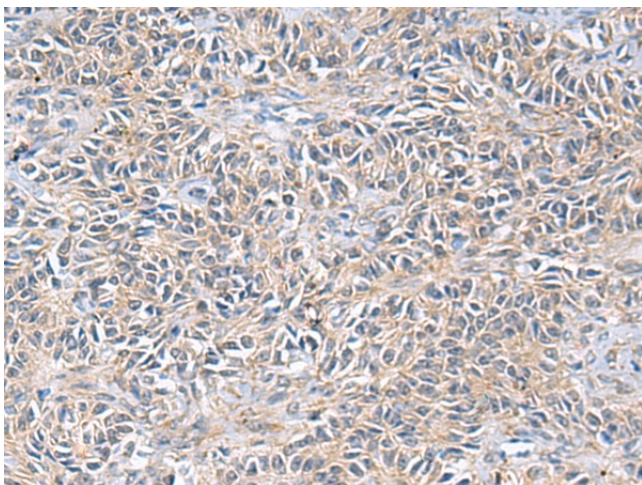
Gel: 12%SDS-PAGE
Lysate: 40 µg
Lane 1-5: Mouse brain tissue
HeLa cell
LNCAP cell
HepG2 cell
Jurkat cell lysates
Primary antibody: [TA367823] (UBE2N Antibody)
at dilution 1/800
Secondary antibody: Goat anti rabbit IgG at
1/5000 dilution
Exposure time: 30 seconds



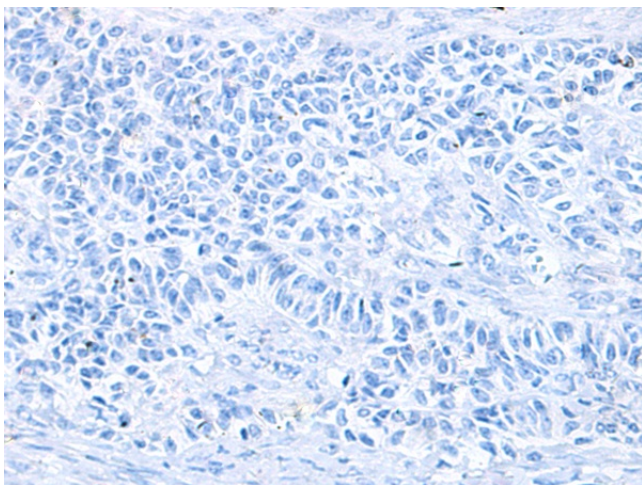
Immunohistochemistry of paraffin-embedded
Human liver cancer tissue using [TA367823]
(UBE2N Antibody) at dilution 1/55 (Original
magnification: ×200)



Immunohistochemistry of paraffin-embedded Human liver cancer tissue using [TA367823] (UBE2N Antibody) at dilution 1/55, treated with synthetic peptide. (Original magnification: $\times 200$)



Immunohistochemistry of paraffin-embedded Human ovarian cancer tissue using [TA367823] (UBE2N Antibody) at dilution 1/55 (Original magnification: $\times 200$)



Immunohistochemistry of paraffin-embedded Human ovarian cancer tissue using [TA367823] (UBE2N Antibody) at dilution 1/55, treated with synthetic peptide. (Original magnification: $\times 200$)