

## Product datasheet for **TA367821S**

### UBAC2 Rabbit Polyclonal Antibody

#### Product data:

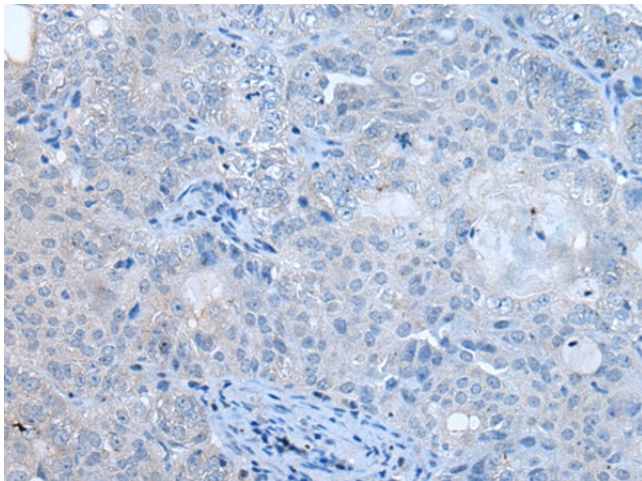
Product Type:	Primary Antibodies
Applications:	IHC
Recommended Dilution:	IHC: 20-100 Positive control: Human ovarian cancer Predicted cell location: Cytoplasm
Reactivity:	Human, Mouse
Host:	Rabbit
Isotype:	IgG
Clonality:	Polyclonal
Immunogen:	Synthetic peptide of human UBAC2
Formulation:	pH7.4 PBS, 0.05% NaN <sub>3</sub> , 40% Glycerol
Purification:	Antigen affinity purification
Conjugation:	Unconjugated
Storage:	Store at -20°C.
Stability:	1 year
Gene Name:	UBA domain containing 2
Database Link:	<a href="#">Entrez Gene 337867 Human Q8NBM4</a>

**Background:** UBAC2 (ubiquitin-associated domain-containing protein 2), also known as PHGDHL1 (phosphoglycerate dehydrogenase-like protein 1), is a 344 amino acid multi-pass membrane protein that contains one UBA domain and is expressed as multiple alternatively spliced isoforms. The gene encoding UBAC2 maps to human chromosome 13, which houses over 400 genes, such as BRCA2 and RB1, and comprises nearly 4% of the human genome. As with most chromosomes, polysomy of part or all of chromosome 13 is deleterious to development and decreases the odds of survival. Trisomy 13, also known as Patau syndrome, is deadly and the few who survive past one year suffer from permanent neurologic defects, difficulty eating and vulnerability to serious respiratory infections.

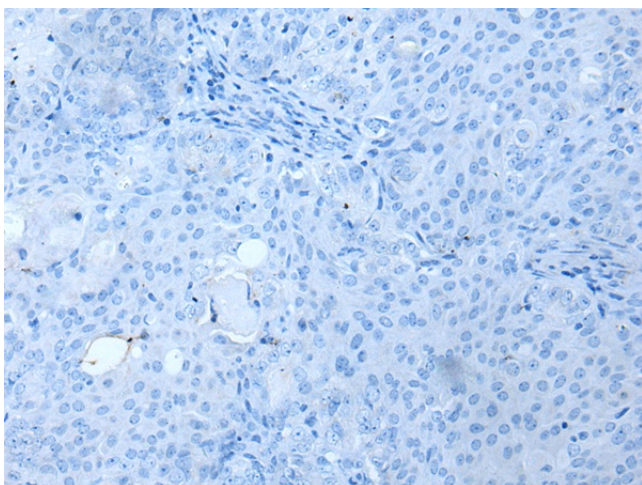
**Synonyms:** FLJ26351; FLJ30001; FLJ30548; FLJ42413; MGC90487; PHGDHL1; RP11-178C10.1



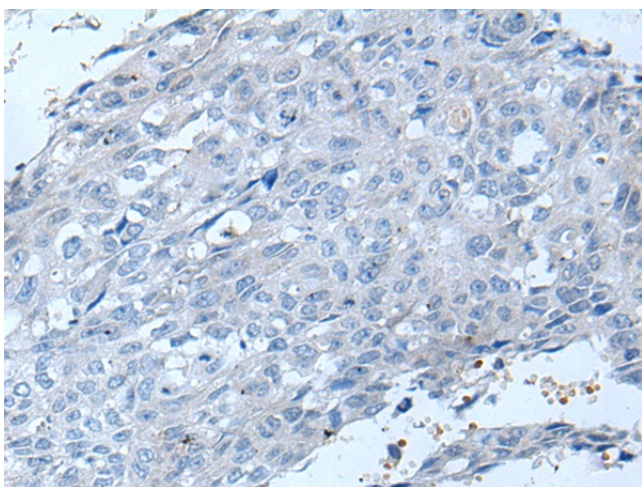
[View online »](#)

**Product images:**

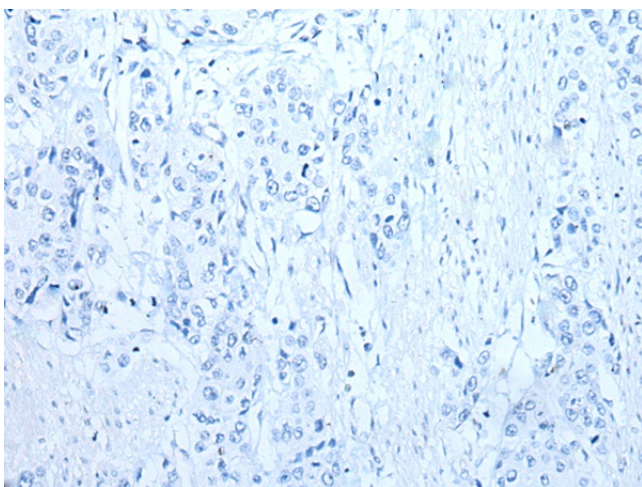
Immunohistochemistry of paraffin-embedded Human ovarian cancer tissue using [TA367821] (UBAC2 Antibody) at dilution 1/20 (Original magnification: ×200)



Immunohistochemistry of paraffin-embedded Human ovarian cancer tissue using [TA367821] (UBAC2 Antibody) at dilution 1/20, treated with synthetic peptide. (Original magnification: ×200)



Immunohistochemistry of paraffin-embedded Human lung cancer tissue using [TA367821] (UBAC2 Antibody) at dilution 1/20 (Original magnification:  $\times 200$ )



Immunohistochemistry of paraffin-embedded Human lung cancer tissue using [TA367821] (UBAC2 Antibody) at dilution 1/20, treated with synthetic peptide. (Original magnification:  $\times 200$ )