

Product datasheet for **TA367816S**

VPS35 Rabbit Polyclonal Antibody

Product data:

Product Type:	Primary Antibodies
Applications:	IHC, WB
Recommended Dilution:	WB: 500-2000 WB positive control: Mouse brain tissue, Human cerebella tissue, A549 cell lysates IHC: 20-100 Positive control: Human brain Predicted cell location: Cytoplasm or Nucleus
Reactivity:	Human, Mouse
Host:	Rabbit
Isotype:	IgG
Clonality:	Polyclonal
Immunogen:	Synthetic peptide of human VPS35
Formulation:	pH7.4 PBS, 0.05% NaN ₃ , 40% Glycerol
Purification:	Antigen affinity purification
Conjugation:	Unconjugated
Storage:	Store at -20°C.
Stability:	1 year
Predicted Protein Size:	92 kDa
Gene Name:	VPS35 retromer complex component
Database Link:	Entrez Gene 55737 Human Q96QK1

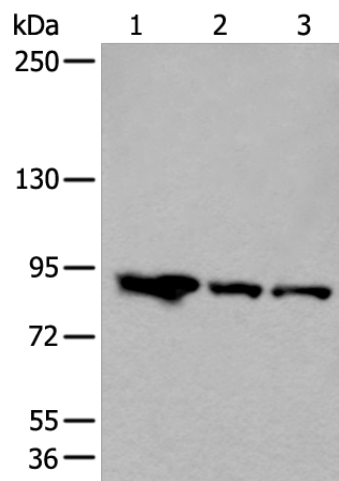
Background: This gene belongs to a group of vacuolar protein sorting (VPS) genes. The encoded protein is a component of a large multimeric complex, termed the retromer complex, involved in retrograde transport of proteins from endosomes to the trans-Golgi network. The close structural similarity between the yeast and human proteins that make up this complex suggests a similarity in function. Expression studies in yeast and mammalian cells indicate that this protein interacts directly with VPS35, which serves as the core of the retromer complex.



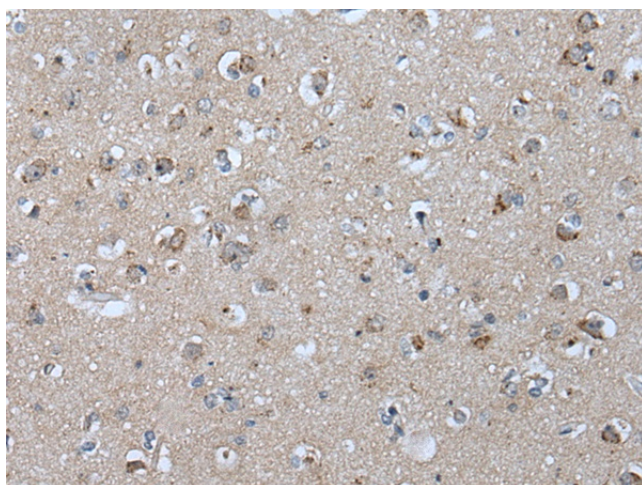
[View online »](#)

Synonyms: DKFZp434E1211; DKFZp434P1672; FLJ10752; FLJ13588; FLJ20388; hVPS35; MEM3

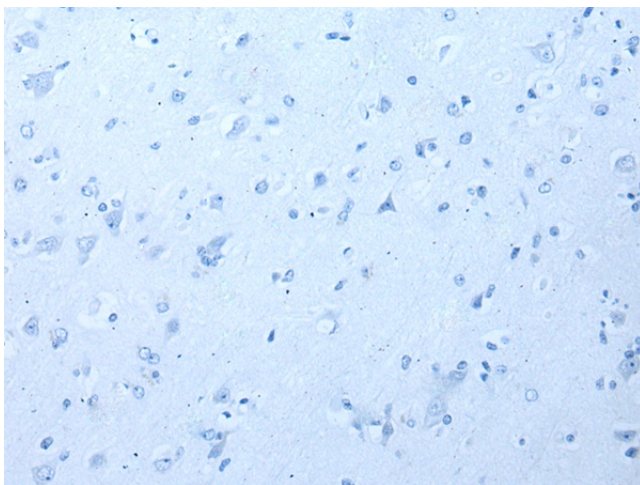
Product images:



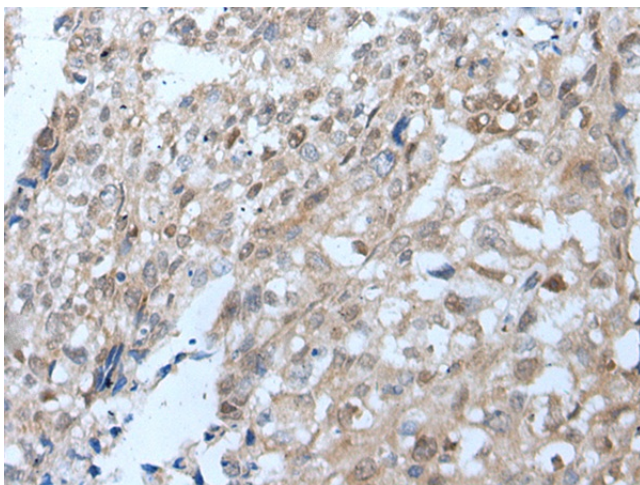
Gel: 6%SDS-PAGE
Lysate: 40 µg
Lane 1-3: Mouse brain tissue
Human cerebella tissue
A549 cell lysates
Primary antibody: [TA367816] (VPS35 Antibody)
at dilution 1/200
Secondary antibody: Goat anti rabbit IgG at
1/8000 dilution
Exposure time: 1 minute



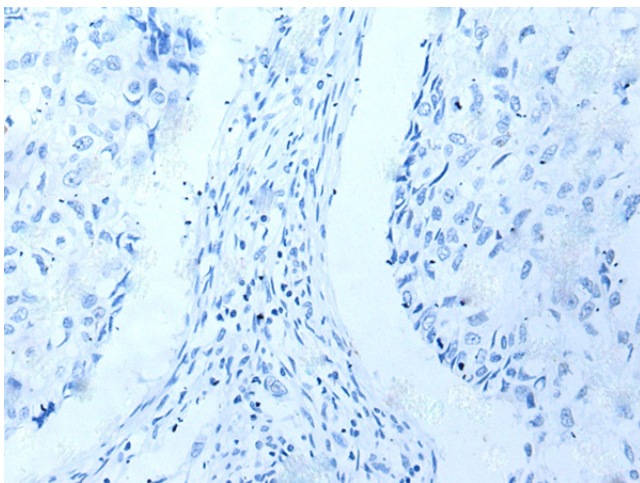
Immunohistochemistry of paraffin-embedded
Human brain tissue using [TA367816] (VPS35
Antibody) at dilution 1/25 (Original magnification:
×200)



Immunohistochemistry of paraffin-embedded Human brain tissue using [TA367816] (VPS35 Antibody) at dilution 1/25, treated with synthetic peptide. (Original magnification: $\times 200$)



Immunohistochemistry of paraffin-embedded Human lung cancer tissue using [TA367816] (VPS35 Antibody) at dilution 1/25 (Original magnification: $\times 200$)



Immunohistochemistry of paraffin-embedded Human lung cancer tissue using [TA367816] (VPS35 Antibody) at dilution 1/25, treated with synthetic peptide. (Original magnification: $\times 200$)