

## Product datasheet for **TA367804**

### SPAG4L (SUN5) Rabbit Polyclonal Antibody

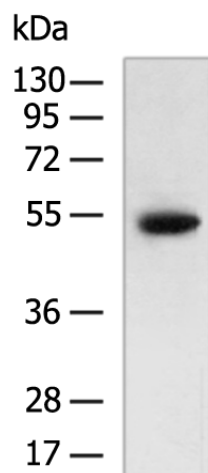
#### Product data:

Product Type:	Primary Antibodies
Applications:	IHC, WB
Recommended Dilution:	WB: 500-2000 WB positive control: Human left kidney cancer tissue lysate IHC: 50-100 Positive control: Human gastric cancer Predicted cell location: Nucleus
Reactivity:	Human, Mouse
Host:	Rabbit
Isotype:	IgG
Clonality:	Polyclonal
Immunogen:	Synthetic peptide of human SUN5
Formulation:	pH7.4 PBS, 0.05% NaN <sub>3</sub> , 40% Glycerol
Concentration:	lot specific
Purification:	Antigen affinity purification
Conjugation:	Unconjugated
Storage:	Store at -20°C.
Stability:	1 year
Predicted Protein Size:	43 kDa
Gene Name:	Sad1 and UNC84 domain containing 5
Database Link:	<a href="#">Entrez Gene 140732 Human Q8TC36</a>
Background:	The protein encoded by this gene appears to play a role in the meiotic stage of spermatogenesis. The encoded protein localizes to the junction between the sperm head and body and may be involved in nuclear envelope reconstitution and nuclear migration. Mutations in this gene have been implicated in acephalic spermatozoa syndrome.
Synonyms:	dj726C3.1; SPAG4L; TSARG4

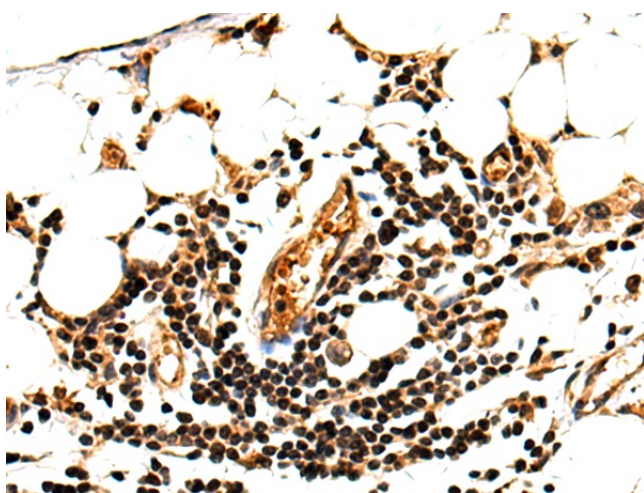


[View online »](#)

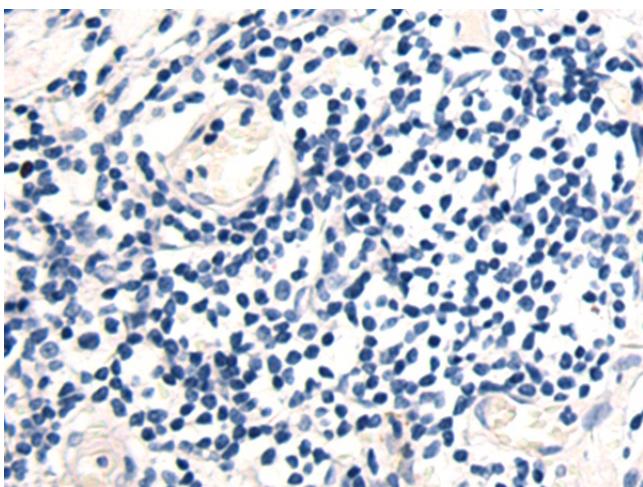
## Product images:



Gel: 8%SDS-PAGE  
Lysate: 40  $\mu$ g  
Lane: Human left kidney cancer tissue lysate  
Primary antibody: TA367804 (SUN5 Antibody) at dilution 1/250  
Secondary antibody: Goat anti rabbit IgG at 1/5000 dilution  
Exposure time: 3 minutes



Immunohistochemistry of paraffin-embedded Human gastric cancer tissue using TA367804 (SUN5 Antibody) at dilution 1/50 (Original magnification:  $\times$ 200)



Immunohistochemistry of paraffin-embedded Human gastric cancer tissue using TA367804 (SUN5 Antibody) at dilution 1/50, treated with synthetic peptide. (Original magnification:  $\times 200$ )