

## Product datasheet for **TA367791**

### **XRN1 Rabbit Polyclonal Antibody**

#### **Product data:**

Product Type:	Primary Antibodies
Applications:	IHC, WB
Recommended Dilution:	WB: 500-2000 WB positive control: Hela $\square$ 231 and K562 cell lysates IHC: 10-50 Positive control: Human esophagus cancer Predicted cell location: Cytoplasm
Reactivity:	Human, Mouse
Host:	Rabbit
Isotype:	IgG
Clonality:	Polyclonal
Immunogen:	Synthetic peptide of human XRN1
Formulation:	pH7.4 PBS, 0.05% NaN <sub>3</sub> , 40% Glycerol
Concentration:	lot specific
Purification:	Antigen affinity purification
Conjugation:	Unconjugated
Storage:	Store at -20°C.
Stability:	1 year
Predicted Protein Size:	194 kDa
Gene Name:	5'-3' exoribonuclease 1
Database Link:	<a href="#">Entrez Gene 54464 Human Q8IZH2</a>



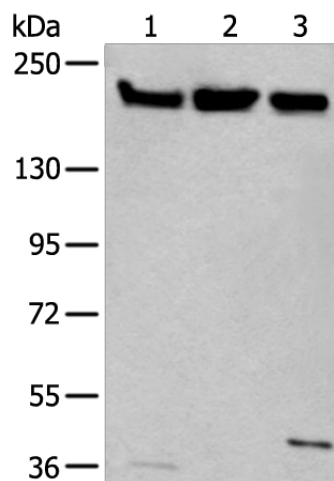
[View online »](#)

**Background:**

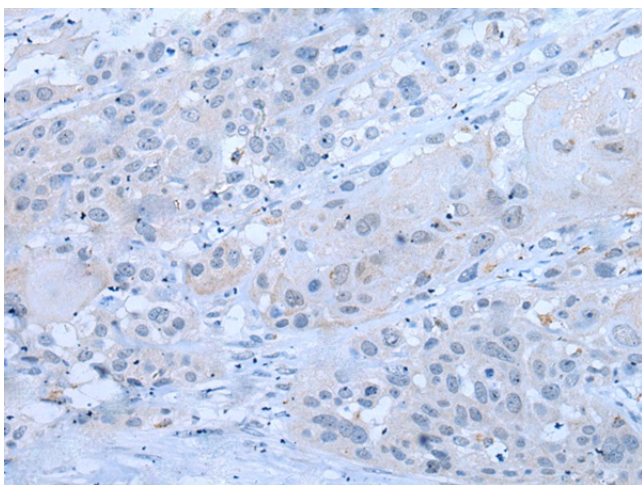
This gene encodes a member of the 5'-3' exonuclease family. The encoded protein may be involved in replication-dependent histone mRNA degradation, and interacts directly with the enhancer of mRNA-decapping protein 4. In addition to mRNA metabolism, a similar protein in yeast has been implicated in a variety of nuclear and cytoplasmic functions, including homologous recombination, meiosis, telomere maintenance, and microtubule assembly. Mutations in this gene are associated with osteosarcoma, suggesting that the encoded protein may also play a role in bone formation. Alternative splicing results in multiple transcript variants.

**Synonyms:**

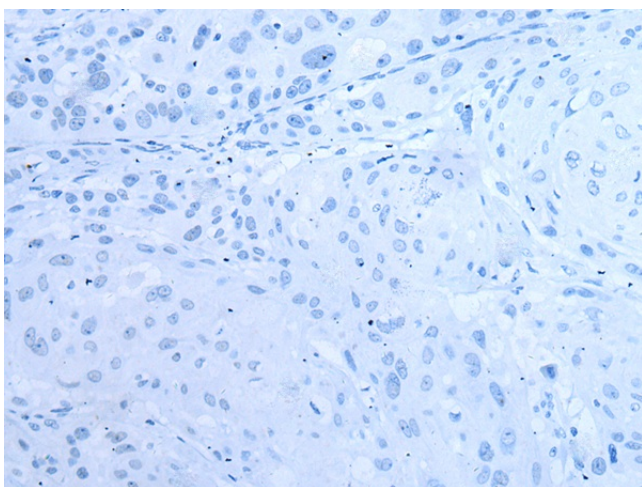
DKFZp434P0721; DKFZp686B22225; DKFZp686F19113; FLJ41903; SEP1

**Product images:**

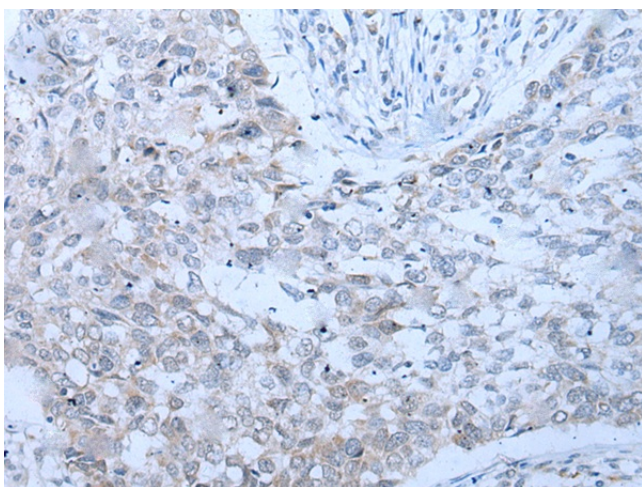
Gel: 6%SDS-PAGE  
Lysate: 40 µg  
Lane 1-3: HeLa  
231 and K562 cell lysates  
Primary antibody: TA367791 (XRN1 Antibody) at dilution 1/250  
Secondary antibody: Goat anti rabbit IgG at 1/8000 dilution  
Exposure time: 2 minutes



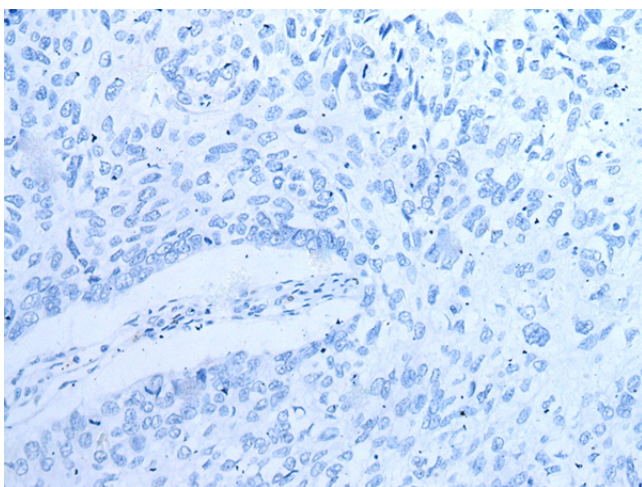
Immunohistochemistry of paraffin-embedded Human esophagus cancer tissue using TA367791 (XRN1 Antibody) at dilution 1/25 (Original magnification: ×200)



Immunohistochemistry of paraffin-embedded Human esophagus cancer tissue using TA367791 (XRN1 Antibody) at dilution 1/25, treated with synthetic peptide. (Original magnification: ×200)



Immunohistochemistry of paraffin-embedded Human lung cancer tissue using TA367791 (XRN1 Antibody) at dilution 1/25 (Original magnification: ×200)



Immunohistochemistry of paraffin-embedded Human lung cancer tissue using TA367791 (XRN1 Antibody) at dilution 1/25, treated with synthetic peptide. (Original magnification: ×200)