

Product datasheet for **TA367790S**

XLF (NHEJ1) Rabbit Polyclonal Antibody

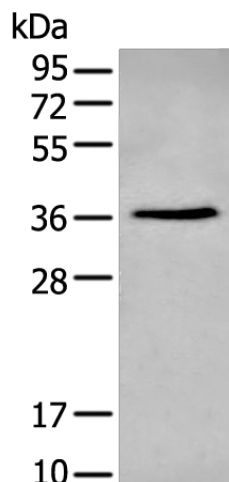
Product data:

Product Type:	Primary Antibodies
Applications:	IHC, WB
Recommended Dilution:	WB: 200-1000 WB positive control: PC-3 cell lysate IHC: 25-100 Positive control: Human colorectal cancer Predicted cell location: Nucleus
Reactivity:	Human, Mouse, Rat
Host:	Rabbit
Isotype:	IgG
Clonality:	Polyclonal
Immunogen:	Synthetic peptide of human NHEJ1
Formulation:	pH7.4 PBS, 0.05% NaN ₃ , 40% Glycerol
Purification:	Antigen affinity purification
Conjugation:	Unconjugated
Storage:	Store at -20°C.
Stability:	1 year
Predicted Protein Size:	33 kDa
Gene Name:	non-homologous end joining factor 1
Database Link:	Entrez Gene 79840 Human Q9H9Q4
Background:	Double-strand breaks in DNA result from genotoxic stresses and are among the most damaging of DNA lesions. This gene encodes a DNA repair factor essential for the nonhomologous end-joining pathway, which preferentially mediates repair of double-stranded breaks. Mutations in this gene cause different kinds of severe combined immunodeficiency disorders.
Synonyms:	Cernunnos; FLJ12610; XLF

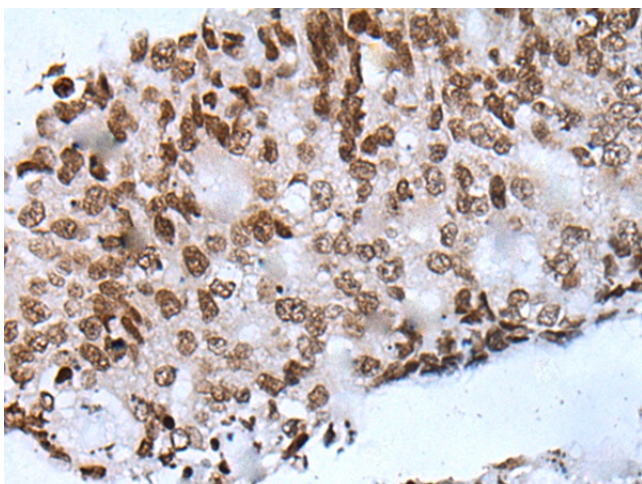


[View online »](#)

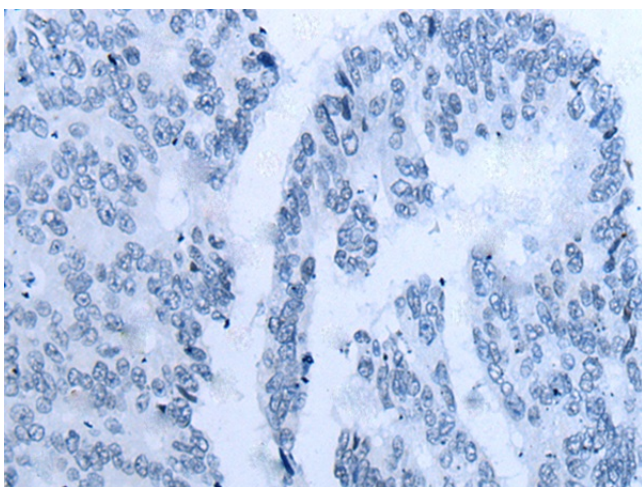
Product images:



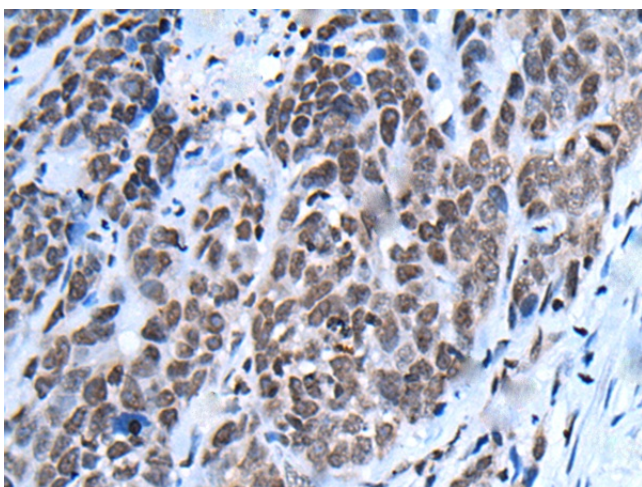
Gel: 12%SDS-PAGE
Lysate: 40 µg
Lane: PC-3 cell lysate
Primary antibody: [TA367790] (NHEJ1 Antibody)
at dilution 1/200
Secondary antibody: Goat anti rabbit IgG at
1/8000 dilution
Exposure time: 20 seconds



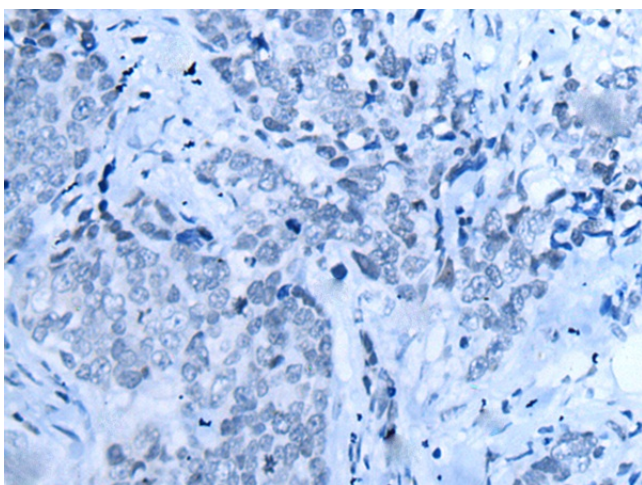
Immunohistochemistry of paraffin-embedded
Human colorectal cancer tissue using [TA367790]
(NHEJ1 Antibody) at dilution 1/20 (Original
magnification: ×200)



Immunohistochemistry of paraffin-embedded Human colorectal cancer tissue using [TA367790] (NHEJ1 Antibody) at dilution 1/20, treated with synthetic peptide. (Original magnification: $\times 200$)



Immunohistochemistry of paraffin-embedded Human thyroid cancer tissue using [TA367790] (NHEJ1 Antibody) at dilution 1/20 (Original magnification: $\times 200$)



Immunohistochemistry of paraffin-embedded Human thyroid cancer tissue using [TA367790] (NHEJ1 Antibody) at dilution 1/20, treated with synthetic peptide. (Original magnification: $\times 200$)