

## Product datasheet for **TA367789**

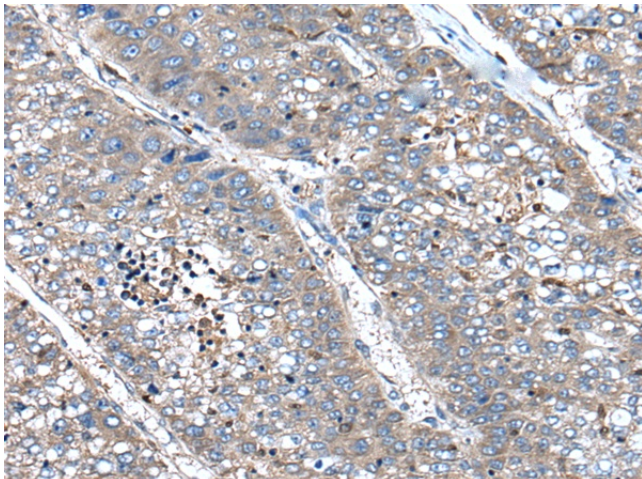
### XIRP1 Rabbit Polyclonal Antibody

#### Product data:

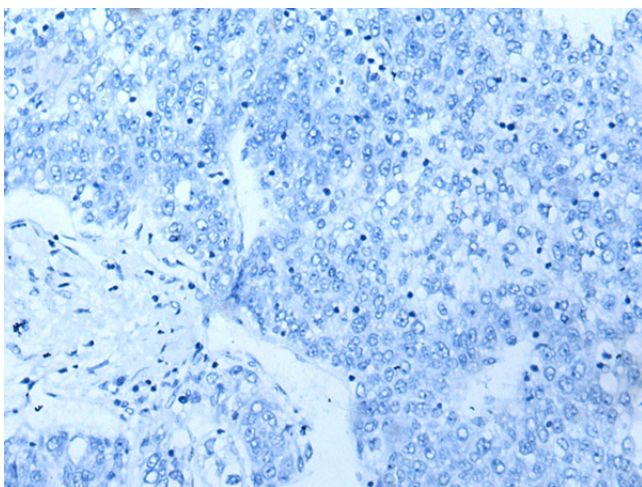
Product Type:	Primary Antibodies
Applications:	IHC
Recommended Dilution:	IHC: 50-300 Positive control: Human liver cancer Predicted cell location: Cytoplasm
Reactivity:	Human
Host:	Rabbit
Isotype:	IgG
Clonality:	Polyclonal
Immunogen:	Synthetic peptide of human XIRP1
Formulation:	pH7.4 PBS, 0.05% NaN <sub>3</sub> , 40% Glycerol
Concentration:	lot specific
Purification:	Antigen affinity purification
Conjugation:	Unconjugated
Storage:	Store at -20°C.
Stability:	1 year
Gene Name:	xin actin binding repeat containing 1
Database Link:	<a href="#">Entrez Gene 165904 Human Q702N8</a>
Background:	Protects actin filaments from depolymerization.
Synonyms:	CMYA1; DKFZp451D042; DKFZp779C1255; DKFZp779C1947; Xin



[View online »](#)

**Product images:**

Immunohistochemistry of paraffin-embedded Human liver cancer tissue using TA367789 (XIRP1 Antibody) at dilution 1/90 (Original magnification:  $\times 200$ )



Immunohistochemistry of paraffin-embedded Human liver cancer tissue using TA367789 (XIRP1 Antibody) at dilution 1/90, treated with synthetic peptide. (Original magnification:  $\times 200$ )