

## Product datasheet for **TA367778S**

### MYL12B Rabbit Polyclonal Antibody

#### Product data:

Product Type:	Primary Antibodies
Applications:	IHC, WB
Recommended Dilution:	WB: 500-2000 WB positive control: Human urinary bladder tissue lysate IHC: 30-150 Positive control: Human cervical cancer Predicted cell location: Cytoplasm
Reactivity:	Human, Mouse, Rat
Host:	Rabbit
Isotype:	IgG
Clonality:	Polyclonal
Immunogen:	Synthetic peptide of human MYL12B
Formulation:	pH7.4 PBS, 0.05% NaN <sub>3</sub> , 40% Glycerol
Purification:	Antigen affinity purification
Conjugation:	Unconjugated
Storage:	Store at -20°C.
Stability:	1 year
Predicted Protein Size:	20 kDa
Gene Name:	myosin light chain 12B
Database Link:	<a href="#">Entrez Gene 103910 Human O14950</a>

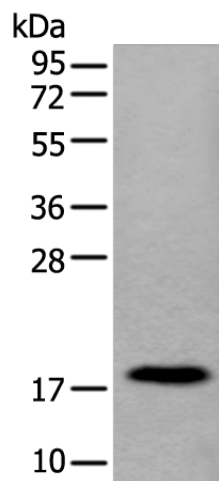
**Background:** MYL12B is a regulatory subunit of myosin and plays an important role in regulation of both smooth muscle and nonmuscle cell contractile activity via its phosphorylation. There are two groups of residues on the MYL12B that are phosphorylated by distinct kinases and have contrasting effects on myosin II biophysical properties. Phosphorylation at Thr18/Ser19 essentially “activates” the myosin molecule to produce force. The second group of phosphorylated residues is at the N-terminus of the MYL12B at Ser1, Ser2 and Thr9 and causes inhibitory effect on myosin activity.



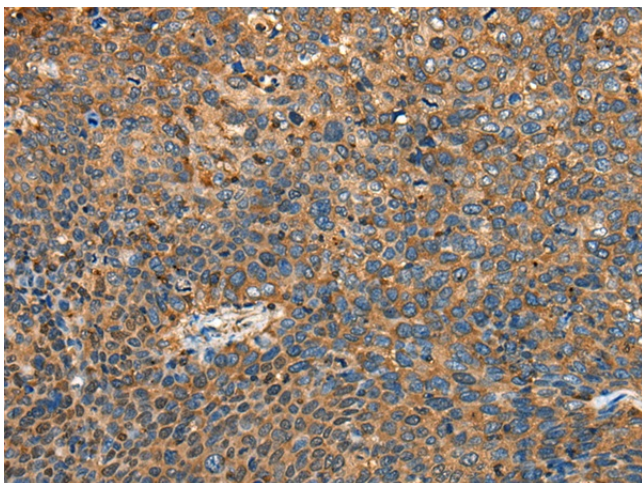
[View online »](#)

Synonyms: MLC-2; MLC-2A; MLC-B; MLC20; MRLC2; MYLC2B; OTTHUMP00000165808; SHUJUN-1

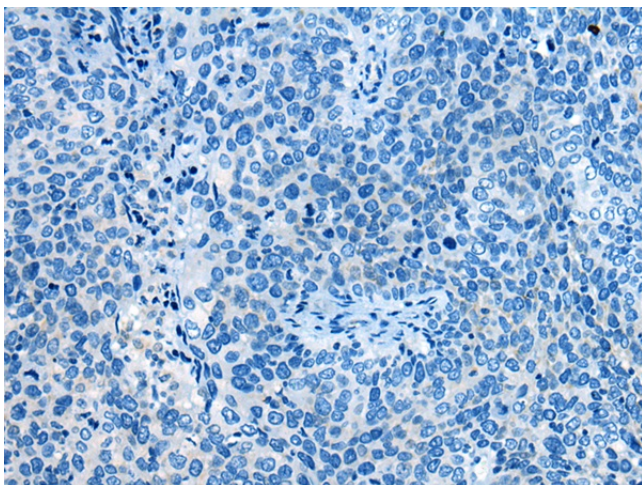
### Product images:



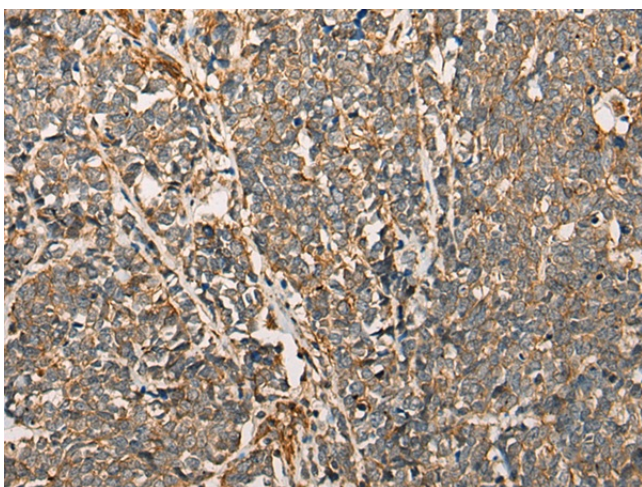
Gel: 12%SDS-PAGE  
Lysate: 40  $\mu$ g  
Lane: Human urinary bladder tissue lysate  
Primary antibody: [TA367778] (MYL12B Antibody) at dilution 1/250  
Secondary antibody: Goat anti rabbit IgG at 1/8000 dilution  
Exposure time: 20 seconds



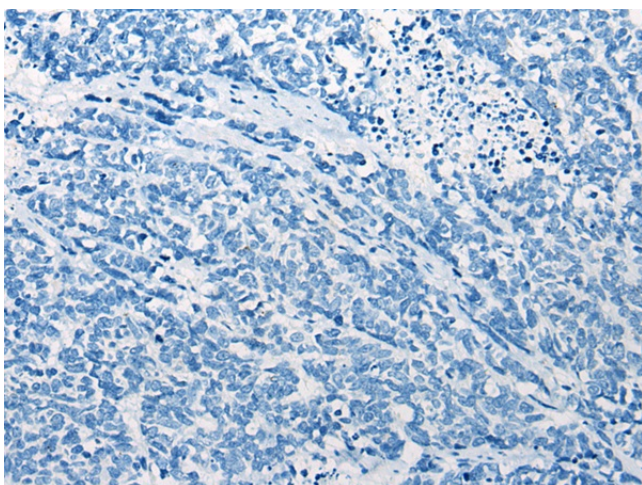
Immunohistochemistry of paraffin-embedded Human cervical cancer tissue using [TA367778] (MYL12B Antibody) at dilution 1/25 (Original magnification:  $\times$ 200)



Immunohistochemistry of paraffin-embedded Human cervical cancer tissue using [TA367778] (MYL12B Antibody) at dilution 1/25, treated with synthetic peptide. (Original magnification: ×200)



Immunohistochemistry of paraffin-embedded Human lung cancer tissue using [TA367778] (MYL12B Antibody) at dilution 1/25 (Original magnification: ×200)



Immunohistochemistry of paraffin-embedded Human lung cancer tissue using [TA367778] (MYL12B Antibody) at dilution 1/25, treated with synthetic peptide. (Original magnification: ×200)