

## Product datasheet for **TA367773S**

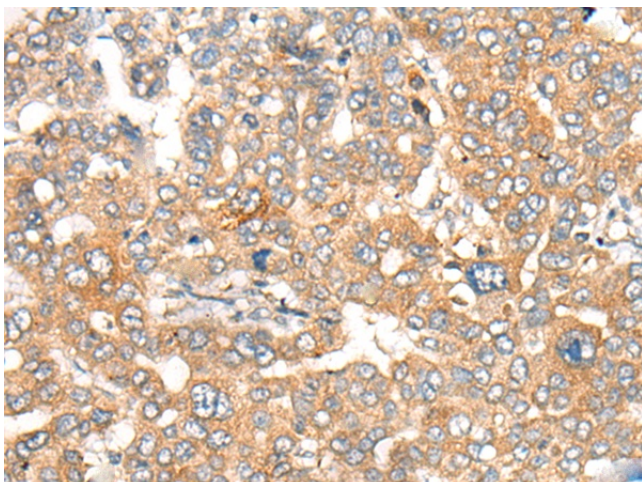
### Caspase 4 (CASP4) Rabbit Polyclonal Antibody

#### Product data:

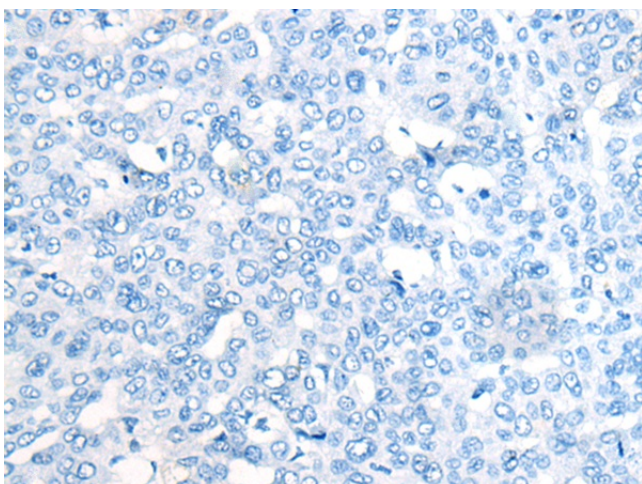
Product Type:	Primary Antibodies
Applications:	IHC
Recommended Dilution:	IHC: 30-150 Positive control: Human liver cancer Predicted cell location: Cytoplasm and Cell membrane
Reactivity:	Human
Host:	Rabbit
Isotype:	IgG
Clonality:	Polyclonal
Immunogen:	Synthetic peptide of human CASP4
Formulation:	pH7.4 PBS, 0.05% NaN <sub>3</sub> , 40% Glycerol
Purification:	Antigen affinity purification
Conjugation:	Unconjugated
Storage:	Store at -20°C.
Stability:	1 year
Gene Name:	caspase 4
Database Link:	<a href="#">Entrez Gene 837 Human P49662</a>
Background:	This gene encodes a protein that is a member of the cysteine-aspartic acid protease (caspase) family. Sequential activation of caspases plays a central role in the execution-phase of cell apoptosis. Caspases exist as inactive proenzymes composed of a prodomain and a large and small protease subunit. Activation of caspases requires proteolytic processing at conserved internal aspartic residues to generate a heterodimeric enzyme consisting of the large and small subunits. This caspase is able to cleave and activate its own precursor protein, as well as caspase 1 precursor. When overexpressed, this gene induces cell apoptosis. Alternative splicing results in transcript variants encoding distinct isoforms.
Synonyms:	CASP-4; ICE(rel)-II; ICE(rel)II; ICEREL-II; ICH-2; ICH2; Mih1/TX; TX



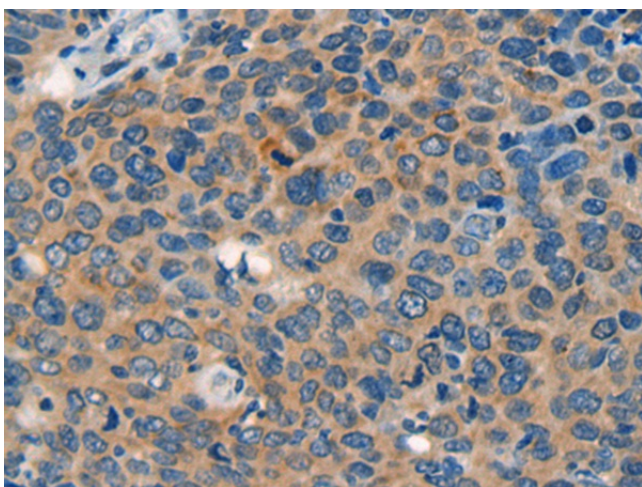
[View online »](#)

**Product images:**

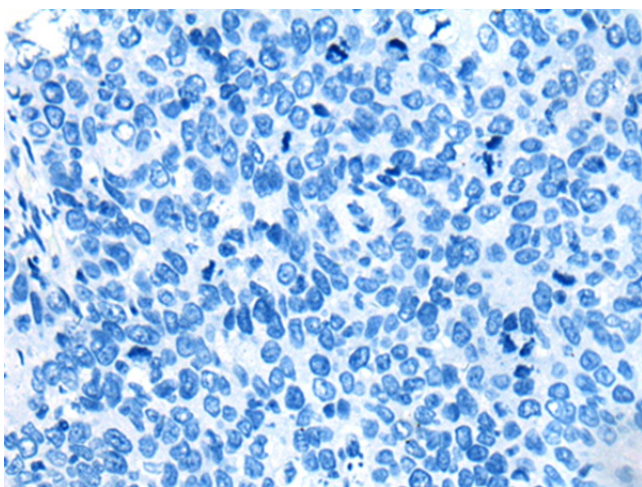
Immunohistochemistry of paraffin-embedded Human liver cancer tissue using [TA367773] (CASP4 Antibody) at dilution 1/40 (Original magnification: x200)



Immunohistochemistry of paraffin-embedded Human liver cancer tissue using [TA367773] (CASP4 Antibody) at dilution 1/40, treated with synthetic peptide. (Original magnification: x200)



Immunohistochemistry of paraffin-embedded Human cervical cancer tissue using [TA367773] (CASP4 Antibody) at dilution 1/40 (Original magnification:  $\times 200$ )



Immunohistochemistry of paraffin-embedded Human cervical cancer tissue using [TA367773] (CASP4 Antibody) at dilution 1/40, treated with synthetic peptide. (Original magnification:  $\times 200$ )