

Product datasheet for **TA367761**

ZDHHC5 Rabbit Polyclonal Antibody

Product data:

Product Type:	Primary Antibodies
Applications:	IHC, WB
Recommended Dilution:	WB: 500-2000 WB positive control: Hela and HT29 cell lysates IHC: 50-100 Positive control: Human esophagus cancer Predicted cell location: Cytoplasm and Cell membrane
Reactivity:	Human, Mouse, Rat
Host:	Rabbit
Isotype:	IgG
Clonality:	Polyclonal
Immunogen:	Synthetic peptide of human ZDHHC5
Formulation:	pH7.4 PBS, 0.05% NaN ₃ , 40% Glycerol
Concentration:	lot specific
Purification:	Antigen affinity purification
Conjugation:	Unconjugated
Storage:	Store at -20°C.
Stability:	1 year
Predicted Protein Size:	77 kDa
Gene Name:	zinc finger DHHC-type containing 5
Database Link:	Entrez Gene 25921 Human Q9C0B5



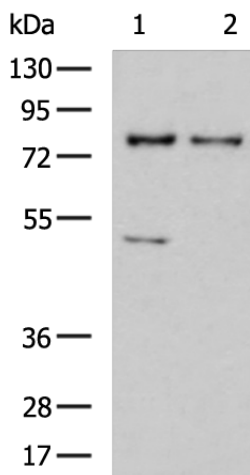
[View online »](#)

Background:

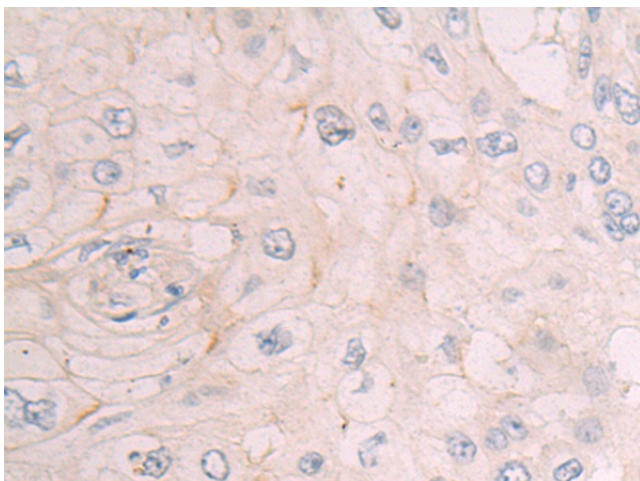
The gene encoding zinc finger DHHC-type-containing (ZDHC5) is located in a region of chromosome 11q12.1 associated with a high rate of chromosomal translocation and variation, which has been linked to the development of various cancers. ZDHC5 stimulates the proliferation and anchorage-dependent and -independent colony formation of non-small cell lung cancer cell lines, and was found to be required in a subset of these cells for establishment of tumor xenografts in mice. ZDHC5 is highly expressed in a variety of embryonic cells including neural progenitor cells, but not in most adult tissues.

Synonyms:

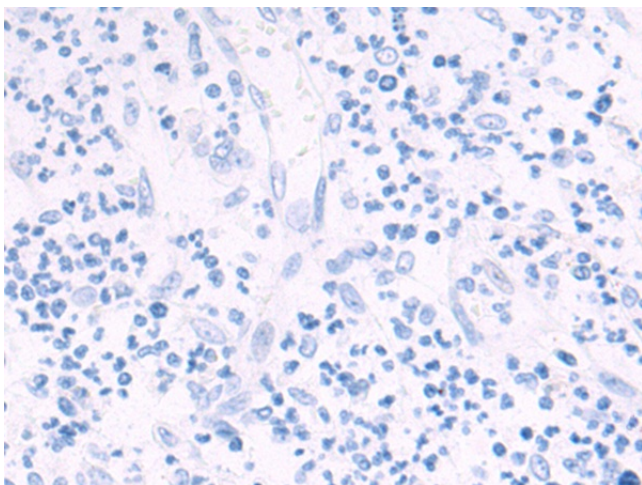
DHHC-5; DKFZp586K0524; KIAA1748; ZNF375

Product images:


Gel: 8%SDS-PAGE
Lysate: 40 µg
Lane 1-2: Hela and HT29 cell lysates
Primary antibody: TA367761 (ZDHC5 Antibody) at dilution 1/400
Secondary antibody: Goat anti rabbit IgG at 1/5000 dilution
Exposure time: 3 minutes



Immunohistochemistry of paraffin-embedded Human esophagus cancer tissue using TA367761 (ZDHC5 Antibody) at dilution 1/50 (Original magnification: ×200)



Immunohistochemistry of paraffin-embedded Human esophagus cancer tissue using TA367761 (ZDHC5 Antibody) at dilution 1/50, treated with synthetic peptide. (Original magnification: $\times 200$)