

## Product datasheet for **TA367758**

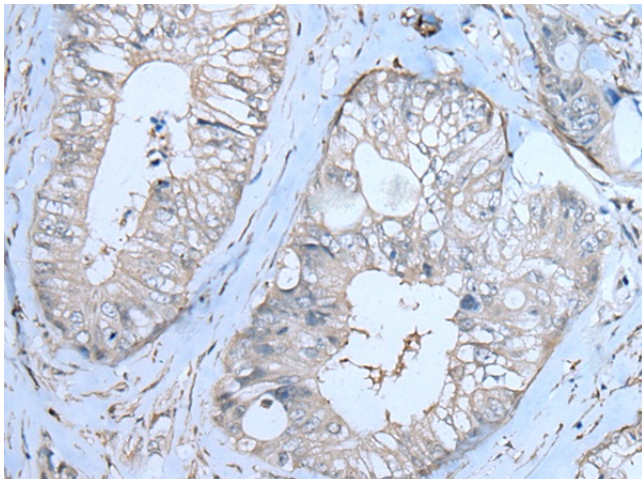
### ZBTB40 Rabbit Polyclonal Antibody

#### Product data:

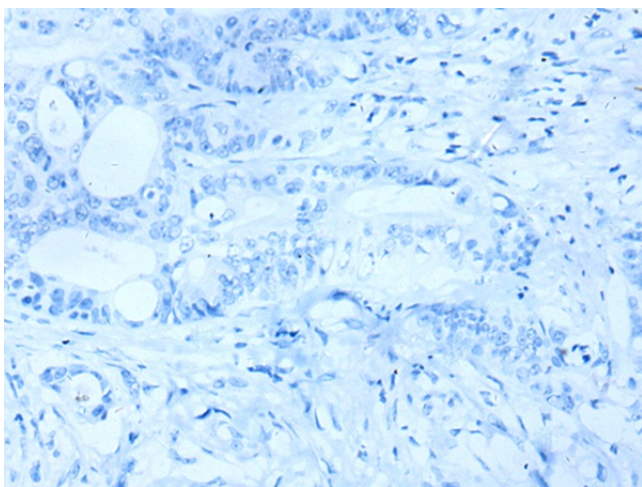
|                       |   |
|-----------------------|---|
| Product Type:         | Primary Antibodies  |
| Applications:         | IHC   |
| Recommended Dilution: | IHC: 20-100<br>Positive control: Human colorectal cancer<br>Predicted cell location: Nucleus or Cytoplasm |
| Reactivity:           | Human   |
| Host:                 | Rabbit  |
| Isotype:              | IgG   |
| Clonality:            | Polyclonal  |
| Immunogen:            | Synthetic peptide of human ZBTB40   |
| Formulation:          | pH7.4 PBS, 0.05% NaN <sub>3</sub> , 40% Glycerol  |
| Concentration:        | lot specific  |
| Purification:         | Antigen affinity purification   |
| Conjugation:          | Unconjugated  |
| Storage:              | Store at -20°C.   |
| Stability:            | 1 year  |
| Gene Name:            | zinc finger and BTB domain containing 40  |
| Database Link:        | <a href="#">Entrez Gene 9923 Human Q9NUA8</a>   |
| Background:           | May be involved in transcriptional regulation.  |
| Synonyms:             | KIAA0478; MGC133098   |



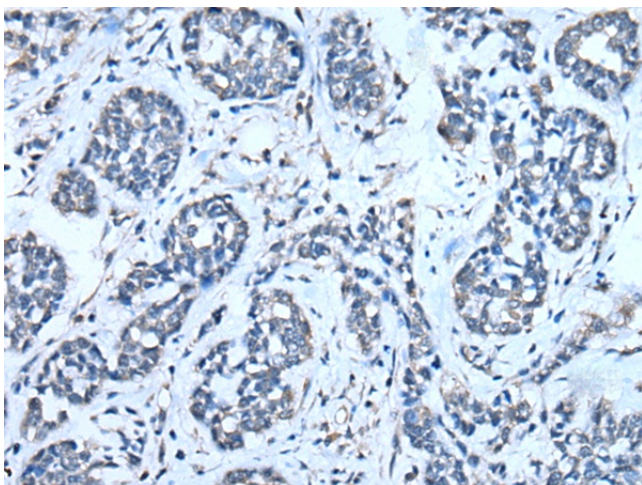
[View online »](#)

**Product images:**

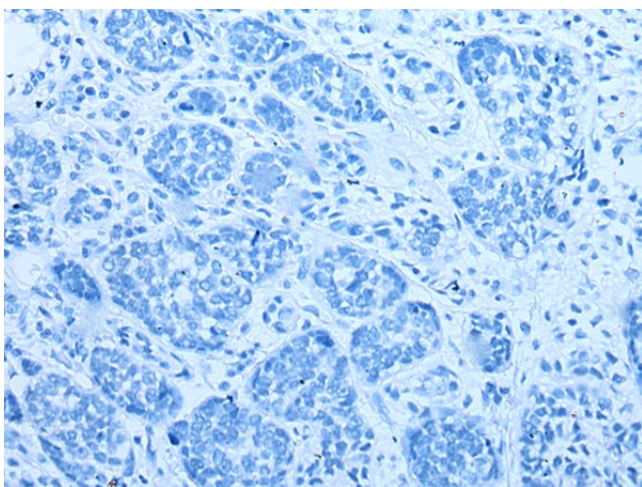
Immunohistochemistry of paraffin-embedded Human colorectal cancer tissue using TA367758 (ZBTB40 Antibody) at dilution 1/20 (Original magnification:  $\times 200$ )



Immunohistochemistry of paraffin-embedded Human colorectal cancer tissue using TA367758 (ZBTB40 Antibody) at dilution 1/20, treated with synthetic peptide. (Original magnification:  $\times 200$ )



Immunohistochemistry of paraffin-embedded Human esophagus cancer tissue using TA367758 (ZBTB40 Antibody) at dilution 1/20 (Original magnification:  $\times 200$ )



Immunohistochemistry of paraffin-embedded Human esophagus cancer tissue using TA367758 (ZBTB40 Antibody) at dilution 1/20, treated with synthetic peptide. (Original magnification:  $\times 200$ )