

Product datasheet for **TA367749**

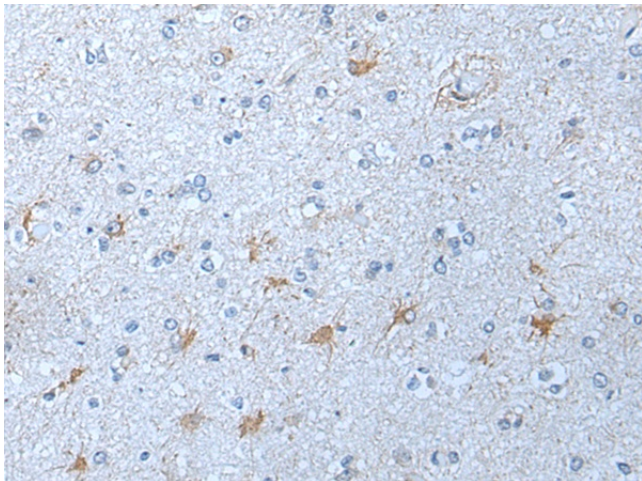
Kallikrein 12 (KLK12) Rabbit Polyclonal Antibody

Product data:

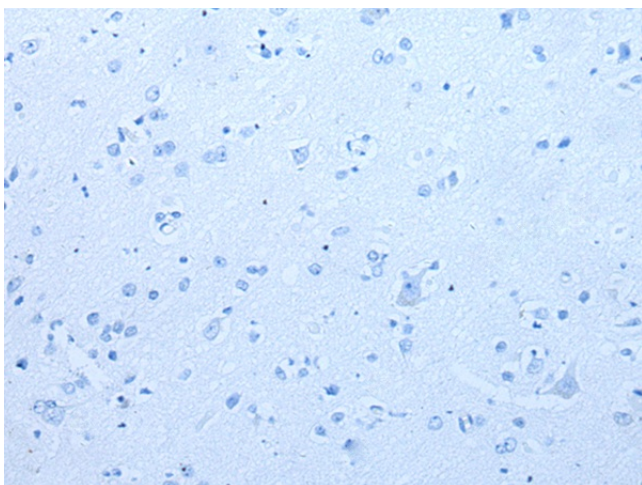
Product Type:	Primary Antibodies
Applications:	IHC
Recommended Dilution:	IHC: 10-50 Positive control: Human brain Predicted cell location: Secreted
Reactivity:	Human
Host:	Rabbit
Isotype:	IgG
Clonality:	Polyclonal
Immunogen:	Synthetic peptide of human KLK12
Formulation:	pH7.4 PBS, 0.05% NaN ₃ , 40% Glycerol
Concentration:	lot specific
Purification:	Antigen affinity purification
Conjugation:	Unconjugated
Storage:	Store at -20°C.
Stability:	1 year
Gene Name:	kallikrein related peptidase 12
Database Link:	Entrez Gene 43849 Human Q9UKR0
Background:	Kallikreins are a subgroup of serine proteases having diverse physiological functions. Growing evidence suggests that many kallikreins are implicated in carcinogenesis and some have potential as novel cancer and other disease biomarkers. This gene is one of the fifteen kallikrein subfamily members located in a cluster on chromosome 19. Alternate splicing of this gene results in three transcript variants encoding different isoforms.
Synonyms:	DKFZp686H1078; KLK-L5; KLKL5; MGC42603



[View online »](#)

Product images:

Immunohistochemistry of paraffin-embedded Human brain tissue using TA367749 (KLK12 Antibody) at dilution 1/30 (Original magnification: ×200)



Immunohistochemistry of paraffin-embedded Human brain tissue using TA367749 (KLK12 Antibody) at dilution 1/30, treated with synthetic peptide. (Original magnification: ×200)