

## Product datasheet for **TA367747**

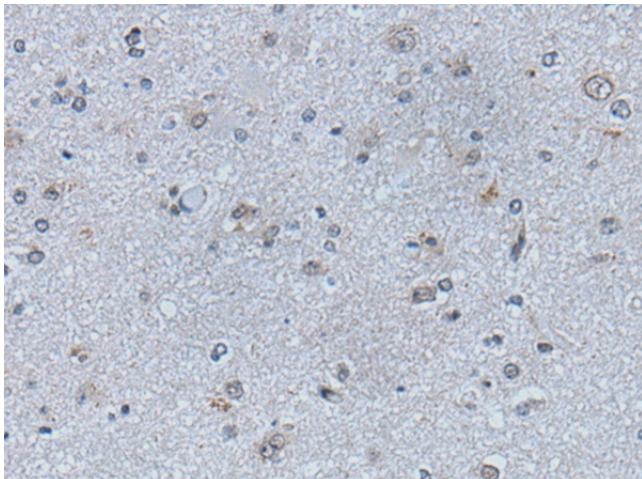
### Ephrin B1 (EFNB1) Rabbit Polyclonal Antibody

#### Product data:

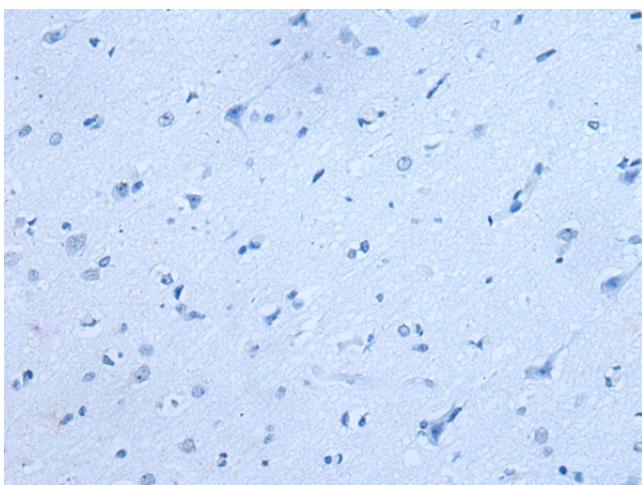
Product Type:	Primary Antibodies
Applications:	IHC
Recommended Dilution:	IHC: 30-150 Positive control: Human brain Predicted cell location: Cytoplasm
Reactivity:	Human, Mouse, Rat
Host:	Rabbit
Isotype:	IgG
Clonality:	Polyclonal
Immunogen:	Synthetic peptide of human EFNB1
Formulation:	pH7.4 PBS, 0.05% NaN <sub>3</sub> , 40% Glycerol
Concentration:	lot specific
Purification:	Antigen affinity purification
Conjugation:	Unconjugated
Storage:	Store at -20°C.
Stability:	1 year
Gene Name:	ephrin B1
Database Link:	<a href="#">Entrez Gene 1947 Human P98172</a>
Background:	The protein encoded by this gene is a type I membrane protein and a ligand of Eph-related receptor tyrosine kinases. It may play a role in cell adhesion and function in the development or maintenance of the nervous system.
Synonyms:	CFND; CFNS; EFL-3; EFL3; Elk-L; ephrin-B1; EPLG2; LERK-2; LERK2; MGC8782



[View online »](#)

**Product images:**

Immunohistochemistry of paraffin-embedded Human brain tissue using TA367747 (EFNB1 Antibody) at dilution 1/50 (Original magnification:  $\times 200$ )



Immunohistochemistry of paraffin-embedded Human brain tissue using TA367747 (EFNB1 Antibody) at dilution 1/50, treated with synthetic peptide. (Original magnification:  $\times 200$ )