

## Product datasheet for **TA367746**

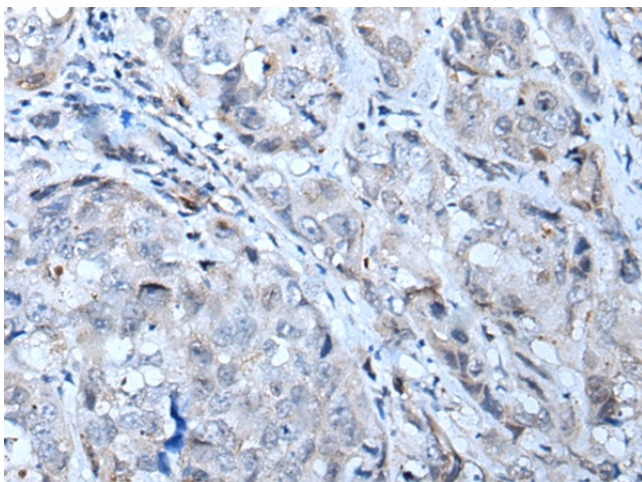
### CTR9 Rabbit Polyclonal Antibody

#### Product data:

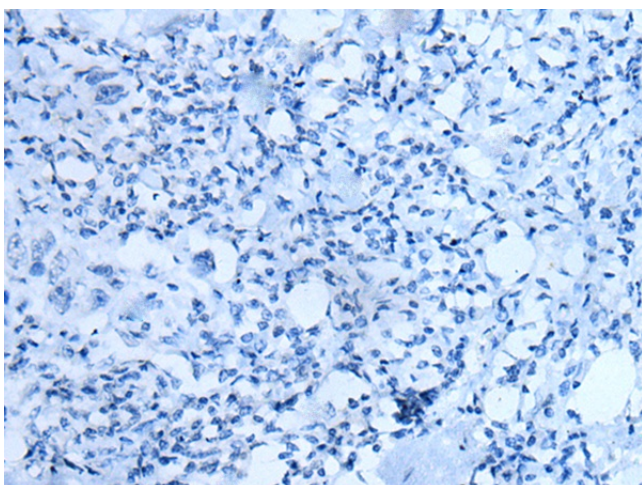
Product Type:	Primary Antibodies
Applications:	IHC
Recommended Dilution:	IHC: 20-100 Positive control: Human breast cancer Predicted cell location: Nucleus
Reactivity:	Human, Mouse
Host:	Rabbit
Isotype:	IgG
Clonality:	Polyclonal
Immunogen:	Synthetic peptide of human CTR9
Formulation:	pH7.4 PBS, 0.05% NaN <sub>3</sub> , 40% Glycerol
Concentration:	lot specific
Purification:	Antigen affinity purification
Conjugation:	Unconjugated
Storage:	Store at -20°C.
Stability:	1 year
Gene Name:	CTR9 homolog, Paf1/RNA polymerase II complex component
Database Link:	<a href="#">Entrez Gene 9646 Human Q6PD62</a>
Background:	CTR9, parafibromin (CDC73; MIM 607393), LEO1 (MIM 610507), and PAF1 (MIM 610506) form the PAF protein complex, which associates with the RNA polymerase II subunit POLR2A (MIM 180660) and with a histone methyltransferase complex (Rozenblatt-Rosen et al., 2005 [PubMed 15632063]).
Synonyms:	KIAA0155; p150; p150TSP; SH2BP1; TSBP



[View online »](#)

**Product images:**

Immunohistochemistry of paraffin-embedded Human breast cancer tissue using TA367746 (CTR9 Antibody) at dilution 1/20 (Original magnification:  $\times 200$ )



Immunohistochemistry of paraffin-embedded Human breast cancer tissue using TA367746 (CTR9 Antibody) at dilution 1/20, treated with synthetic peptide. (Original magnification:  $\times 200$ )