

## Product datasheet for **TA367743**

### ULK1 Rabbit Polyclonal Antibody

#### Product data:

Product Type:	Primary Antibodies
Applications:	IHC, WB
Recommended Dilution:	WB: 200-1000 WB positive control: Hela cell lysate IHC: 20-100 Positive control: Human breast cancer Predicted cell location: Cytoplasm
Reactivity:	Human
Host:	Rabbit
Isotype:	IgG
Clonality:	Polyclonal
Immunogen:	Synthetic peptide of human ULK1
Formulation:	pH7.4 PBS, 0.05% NaN <sub>3</sub> , 40% Glycerol
Concentration:	lot specific
Purification:	Antigen affinity purification
Conjugation:	Unconjugated
Storage:	Store at -20°C.
Stability:	1 year
Predicted Protein Size:	113 kDa
Gene Name:	unc-51 like autophagy activating kinase 1
Database Link:	<a href="#">Entrez Gene 8408 Human O75385</a>



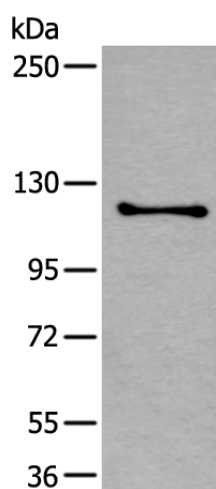
[View online »](#)

**Background:**

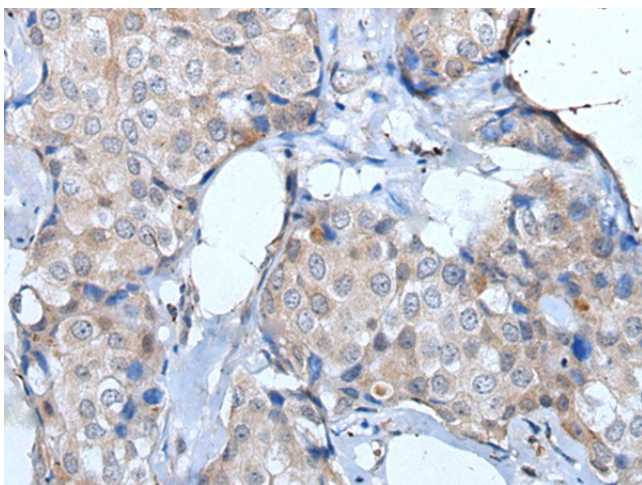
ULK1 and ULK2 (for UNC-51-like kinase) encode similar amino-terminal serine/threonine kinase domains, a proline/serine-rich (PS) domain, and a species conserved carboxyl-terminal domain. Both share homology with the UNC-51 kinase from *Caenorhabditis elegans* and the APG1 kinase in yeast, which are involved in axonal extension and growth, and autophagy, respectively. ULK1 maps to human chromosome 12q24.3 and is ubiquitously expressed. ULK2, also widely expressed, maps to mouse chromosome 11B1.3 and is expected to have a similar molecular weight as ULK1 in human. ULK1 and ULK2 are thought to auto-phosphorylate the PS domain in vitro, and the significant homology among vertebrates suggest that ULK1 and ULK2 are involved in the regulation of fundamental biological processes.

**Synonyms:**

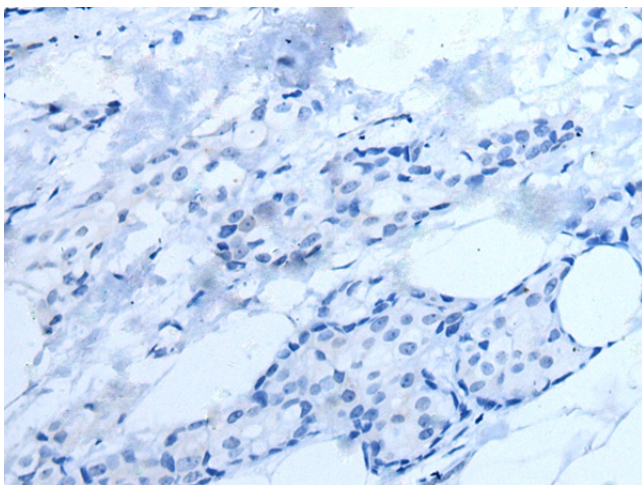
ATG1; FLJ38455; FLJ46475; KIAA0722; UNC51; Unc51.1

**Product images:**

Gel: 6%SDS-PAGE  
Lysate: 40 µg  
Lane: HeLa cell lysate  
Primary antibody: TA367743 (ULK1 Antibody) at dilution 1/250  
Secondary antibody: Goat anti rabbit IgG at 1/8000 dilution  
Exposure time: 20 seconds



Immunohistochemistry of paraffin-embedded Human breast cancer tissue using TA367743 (ULK1 Antibody) at dilution 1/25 (Original magnification: x200)



Immunohistochemistry of paraffin-embedded Human breast cancer tissue using TA367743 (ULK1 Antibody) at dilution 1/25, treated with synthetic peptide. (Original magnification: ×200)