

## Product datasheet for **TA367722**

### alpha 1 Spectrin (SPTA1) Rabbit Polyclonal Antibody

#### Product data:

|                         |   |
|-------------------------|---|
| Product Type:           | Primary Antibodies  |
| Applications:           | IHC, WB   |
| Recommended Dilution:   | WB: 200-1000<br>WB positive control: Human heart tissue□Mouse heart tissue lysates<br>IHC: 25-100<br>Positive control: Human thyroid cancer<br>Predicted cell location: Cytoplasm |
| Reactivity:             | Human, Mouse  |
| Host:                   | Rabbit  |
| Isotype:                | IgG   |
| Clonality:              | Polyclonal  |
| Immunogen:              | Synthetic peptide of human SPTA1  |
| Formulation:            | pH7.4 PBS, 0.05% NaN <sub>3</sub> , 40% Glycerol  |
| Concentration:          | lot specific  |
| Purification:           | Antigen affinity purification   |
| Conjugation:            | Unconjugated  |
| Storage:                | Store at -20°C.   |
| Stability:              | 1 year  |
| Predicted Protein Size: | 280 kDa   |
| Gene Name:              | spectrin alpha, erythrocytic 1  |
| Database Link:          | <a href="#">Entrez Gene 6708 Human P02549</a>   |



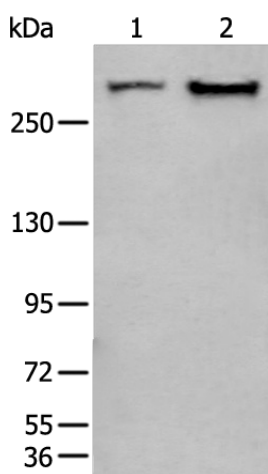
[View online »](#)

**Background:**

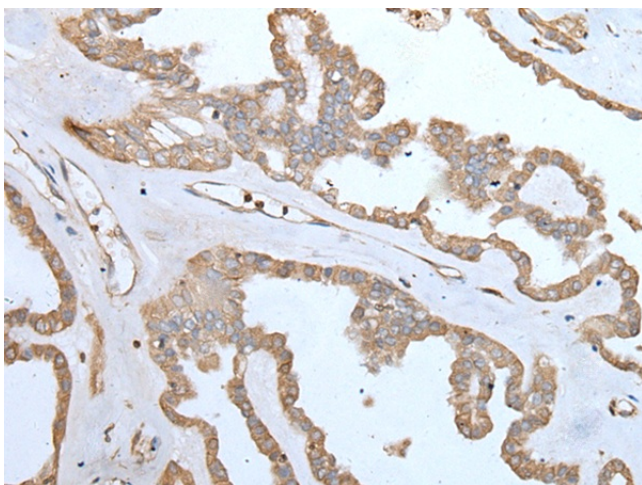
Spectrin is an actin crosslinking and molecular scaffold protein that links the plasma membrane to the actin cytoskeleton, and functions in the determination of cell shape, arrangement of transmembrane proteins, and organization of organelles. It is a tetramer made up of alpha-beta dimers linked in a head-to-head arrangement. This gene is one member of a family of alpha-spectrin genes. The encoded protein is primarily composed of 22 spectrin repeats which are involved in dimer formation. It forms weaker tetramer interactions than non-erythrocytic alpha spectrin, which may increase the plasma membrane elasticity and deformability of red blood cells. Mutations in this gene result in a variety of hereditary red blood cell disorders, including elliptocytosis type 2, pyropoikilocytosis, and spherocytic hemolytic anemia.

**Synonyms:**

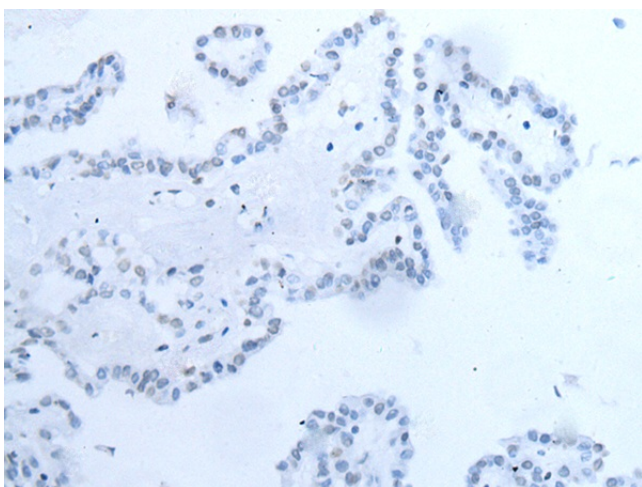
EL2; HPP; HS3; SPH3; SPTA

**Product images:**

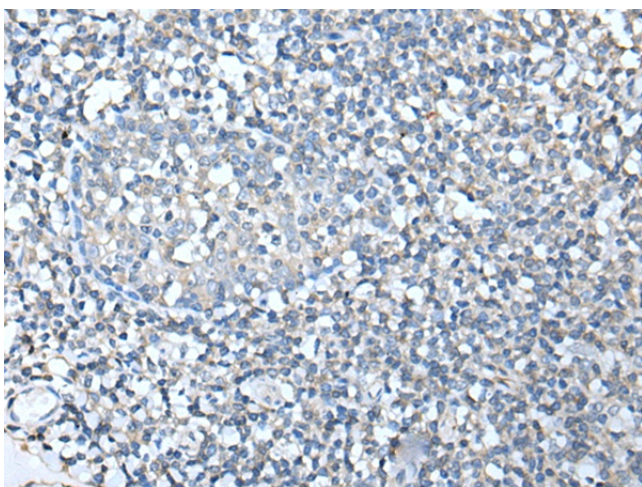
Gel: 6%SDS-PAGE  
Lysate: 40 µg  
Lane 1-2: Human heart tissue  
Mouse heart tissue lysates  
Primary antibody: TA367722 (SPTA1 Antibody) at dilution 1/250  
Secondary antibody: Goat anti rabbit IgG at 1/8000 dilution  
Exposure time: 5 seconds



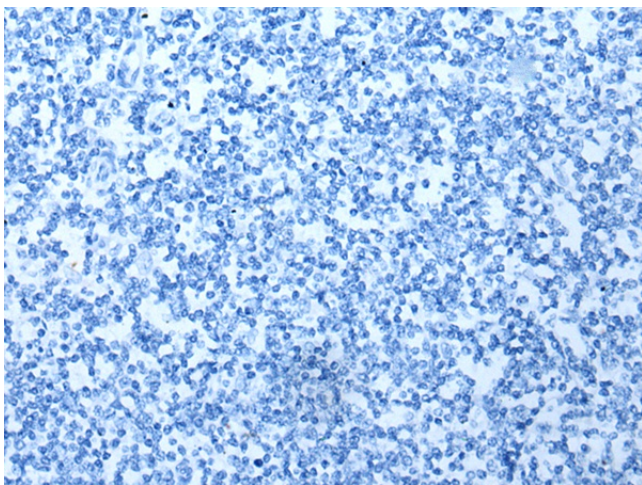
Immunohistochemistry of paraffin-embedded Human thyroid cancer tissue using TA367722 (SPTA1 Antibody) at dilution 1/25 (Original magnification: ×200)



Immunohistochemistry of paraffin-embedded Human thyroid cancer tissue using TA367722 (SPTA1 Antibody) at dilution 1/25, treated with synthetic peptide. (Original magnification:  $\times 200$ )



Immunohistochemistry of paraffin-embedded Human tonsil tissue using TA367722 (SPTA1 Antibody) at dilution 1/25 (Original magnification:  $\times 200$ )



Immunohistochemistry of paraffin-embedded Human tonsil tissue using TA367722 (SPTA1 Antibody) at dilution 1/25, treated with synthetic peptide. (Original magnification:  $\times 200$ )