

Product datasheet for TA367721

Myelin oligodendrocyte glycoprotein (MOG) Rabbit Polyclonal Antibody

Product data:

Product Type:	Primary Antibodies
Applications:	IHC, WB
Recommended Dilution:	WB: 500-2000 WB positive control: Mouse brain tissue□Rat brain tissue□Human cerebrum tissue□Human cerebella tissue lysates IHC: 25-100 Positive control: Human breast cancer Predicted cell location: Cell membrane
Reactivity:	Human, Mouse, Rat
Host:	Rabbit
Isotype:	IgG
Clonality:	Polyclonal
Immunogen:	Synthetic peptide of human MOG
Formulation:	pH7.4 PBS, 0.05% NaN ₃ , 40% Glycerol
Concentration:	lot specific
Purification:	Antigen affinity purification
Conjugation:	Unconjugated
Storage:	Store at -20°C.
Stability:	1 year
Predicted Protein Size:	28 kDa
Gene Name:	myelin oligodendrocyte glycoprotein
Database Link:	Entrez Gene 4340 Human Q16653

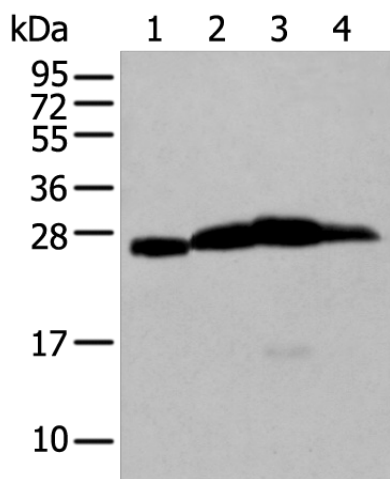
Background: The product of this gene is a membrane protein expressed on the oligodendrocyte cell surface and the outermost surface of myelin sheaths. Due to this localization, it is a primary target antigen involved in immune-mediated demyelination. This protein may be involved in completion and maintenance of the myelin sheath and in cell-cell communication. Alternatively spliced transcript variants encoding different isoforms have been identified.



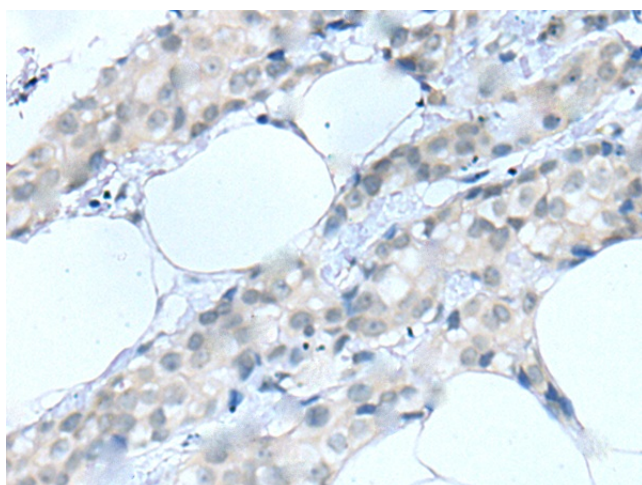
[View online »](#)

Synonyms: MGC26137; MOGIG2

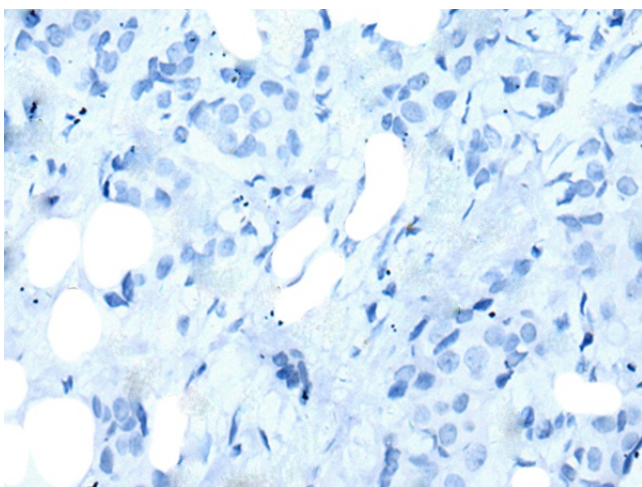
Product images:



Gel: 12%SDS-PAGE
 Lysate: 40 µg
 Lane 1-4: Mouse brain tissue
 Rat brain tissue
 Human cerebrum tissue
 Human cerebella tissue lysates
 Primary antibody: TA367721 (MOG Antibody) at dilution 1/250
 Secondary antibody: Goat anti rabbit IgG at 1/8000 dilution
 Exposure time: 3 seconds



Immunohistochemistry of paraffin-embedded Human breast cancer tissue using TA367721 (MOG Antibody) at dilution 1/25 (Original magnification: ×200)



Immunohistochemistry of paraffin-embedded Human breast cancer tissue using TA367721 (MOG Antibody) at dilution 1/25, treated with synthetic peptide. (Original magnification: $\times 200$)