

## Product datasheet for **TA367719S**

### MTA3 Rabbit Polyclonal Antibody

#### Product data:

Product Type:	Primary Antibodies
Applications:	IHC
Recommended Dilution:	IHC: 25-100 Positive control: Human esophagus cancer Predicted cell location: Nucleus
Reactivity:	Human, Mouse
Host:	Rabbit
Isotype:	IgG
Clonality:	Polyclonal
Immunogen:	Synthetic peptide of human MTA3
Formulation:	pH7.4 PBS, 0.05% NaN <sub>3</sub> , 40% Glycerol
Purification:	Antigen affinity purification
Conjugation:	Unconjugated
Storage:	Store at -20°C.
Stability:	1 year
Gene Name:	metastasis associated 1 family member 3
Database Link:	<a href="#">Entrez Gene 57504 Human Q9BTC8</a>



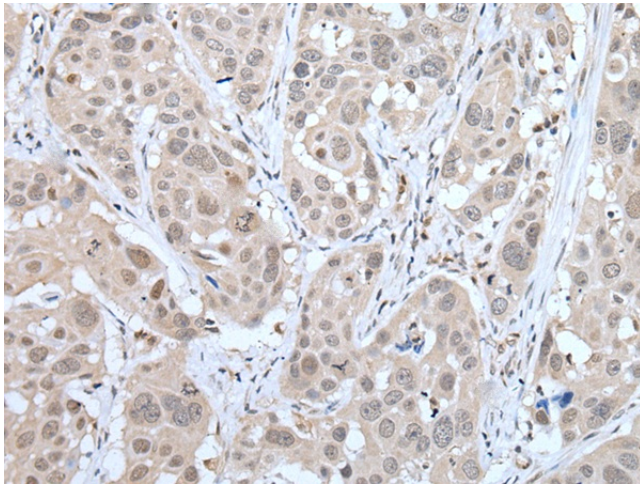
[View online »](#)

**Background:**

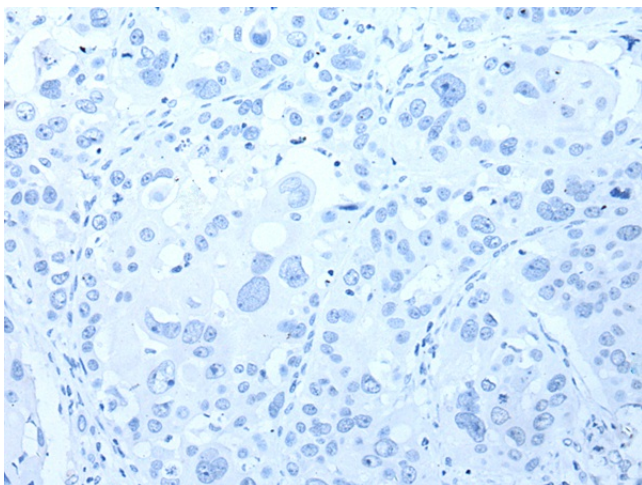
Metastasis-associated protein 3 (MTA3) is a subunit of the Mi-2/NuRD transcriptional corepressor complex. MTA3 and the Mi-2/NuRD complex mediate repression of Snail in breast cancer cells where MTA3 works to maintain a differentiated, epithelial status. The protein is involved in gene expression regulation by covalent modifications of histone proteins. There are two known isoforms of MTA3, a short and a long form. The short isoform binds to ER and sequesters it to the cytoplasm and betters non-genomic responses, whereas the long form is found in the nucleus. MTA3 is widely expressed with highest expression in brain, adrenal glands, ovaries and virgin mammary glands. It has been found to be expressed in higher levels in tumors than in adjacent normal tissue in the same individual. Plays a role in maintenance of the normal epithelial architecture through the repression of SNAI1 transcription in a histone deacetylase-dependent manner, and thus the regulation of E-cadherin levels. Contributes to transcriptional repression by BCL6.

**Synonyms:**

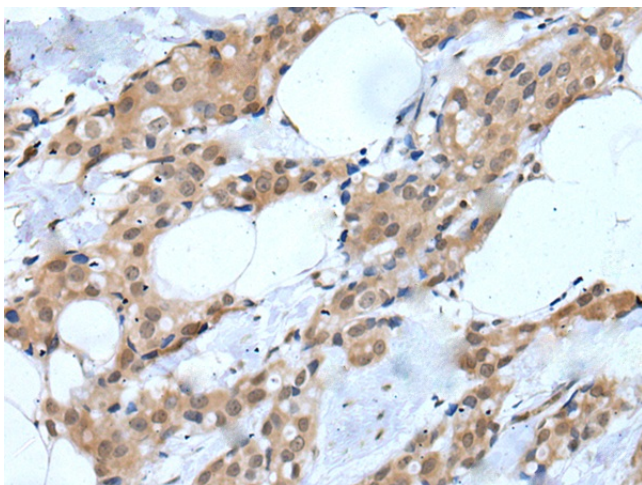
KIAA1266

**Product images:**

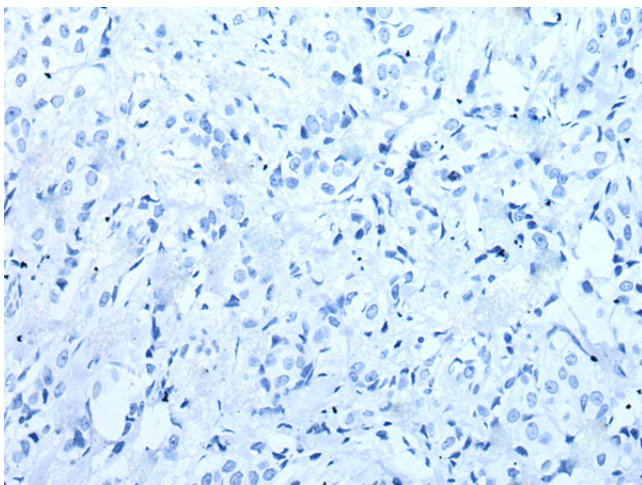
Immunohistochemistry of paraffin-embedded Human esophagus cancer tissue using [TA367719] (MTA3 Antibody) at dilution 1/20 (Original magnification:  $\times 200$ )



Immunohistochemistry of paraffin-embedded Human esophagus cancer tissue using [TA367719] (MTA3 Antibody) at dilution 1/20, treated with synthetic peptide. (Original magnification: ×200)



Immunohistochemistry of paraffin-embedded Human breast cancer tissue using [TA367719] (MTA3 Antibody) at dilution 1/20 (Original magnification: ×200)



Immunohistochemistry of paraffin-embedded Human breast cancer tissue using [TA367719] (MTA3 Antibody) at dilution 1/20, treated with synthetic peptide. (Original magnification: ×200)