

## Product datasheet for **TA367718**

### MEF2BNB (BORCS8) Rabbit Polyclonal Antibody

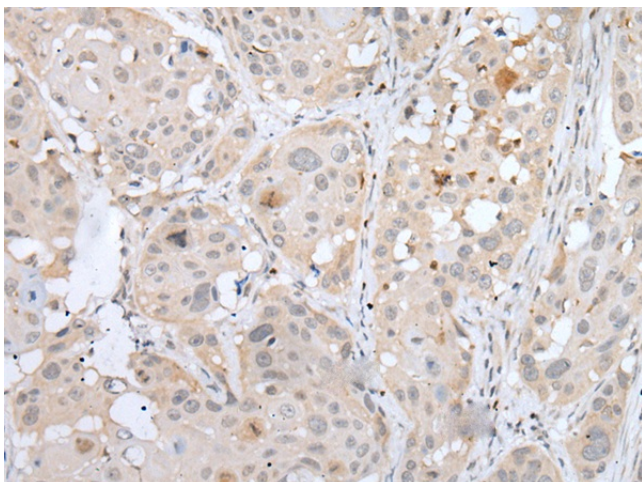
#### Product data:

Product Type:	Primary Antibodies
Applications:	IHC
Recommended Dilution:	IHC: 35-200 Positive control: Human esophagus cancer Predicted cell location: Cytoplasm and Cell membrane
Reactivity:	Human
Host:	Rabbit
Isotype:	IgG
Clonality:	Polyclonal
Immunogen:	Synthetic peptide of human BORCS8
Formulation:	pH7.4 PBS, 0.05% NaN <sub>3</sub> , 40% Glycerol
Concentration:	lot specific
Purification:	Antigen affinity purification
Conjugation:	Unconjugated
Storage:	Store at -20°C.
Stability:	1 year
Gene Name:	BLOC-1 related complex subunit 8
Database Link:	<a href="#">Entrez Gene 729991 Human Q96FH0</a>

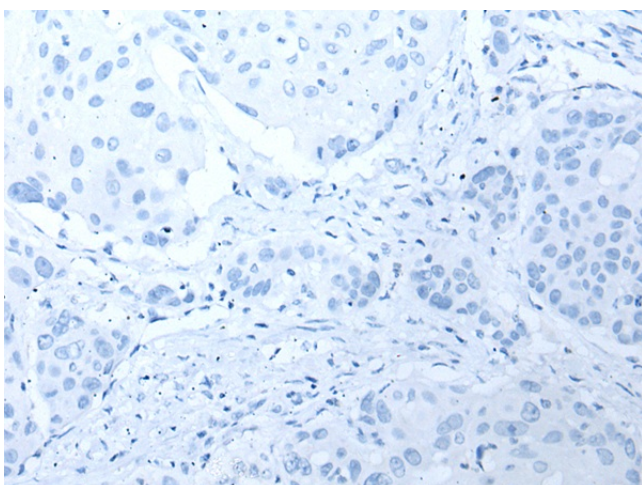
**Background:** BORCS8, also known as BORCS8, the gene represents numerous read-through transcripts that span geneID:729991 and 100271849. Many read-through transcripts are predicted to be nonsense-mediated decay (NMD) candidates, and are thought to be non-coding. Some transcripts are predicted to be capable of translation reinitiation at a downstream AUG, resulting in expression of at least one isoform of myocyte enhancer factor 2B (MEF2B) from this read-through locus.



[View online »](#)

**Product images:**

Immunohistochemistry of paraffin-embedded Human esophagus cancer tissue using TA367718 (BORCS8 Antibody) at dilution 1/50 (Original magnification:  $\times 200$ )



Immunohistochemistry of paraffin-embedded Human esophagus cancer tissue using TA367718 (BORCS8 Antibody) at dilution 1/50, treated with synthetic peptide. (Original magnification:  $\times 200$ )