

## Product datasheet for **TA367686S**

### IFNGR1 Rabbit Polyclonal Antibody

#### Product data:

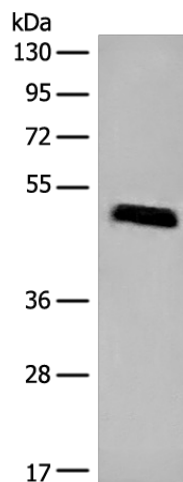
Product Type:	Primary Antibodies
Applications:	IHC, WB
Recommended Dilution:	WB: 200-1000 WB positive control: HEPG2 cell lysate IHC: 20-100 Positive control: Human colorectal cancer Predicted cell location: Cell membrane
Reactivity:	Human
Host:	Rabbit
Isotype:	IgG
Clonality:	Polyclonal
Immunogen:	Synthetic peptide of human IFNGR1
Formulation:	pH7.4 PBS, 0.05% NaN <sub>3</sub> , 40% Glycerol
Purification:	Antigen affinity purification
Conjugation:	Unconjugated
Storage:	Store at -20°C.
Stability:	1 year
Predicted Protein Size:	54 kDa
Gene Name:	interferon gamma receptor 1
Database Link:	<a href="#">Entrez Gene 3459 Human P15260</a>

**Background:** This gene (IFNGR1) encodes the ligand-binding chain (alpha) of the gamma interferon receptor. Human interferon-gamma receptor is a heterodimer of IFNGR1 and IFNGR2. A genetic variation in IFNGR1 is associated with susceptibility to Helicobacter pylori infection. In addition, defects in IFNGR1 are a cause of mendelian susceptibility to mycobacterial disease, also known as familial disseminated atypical mycobacterial infection.

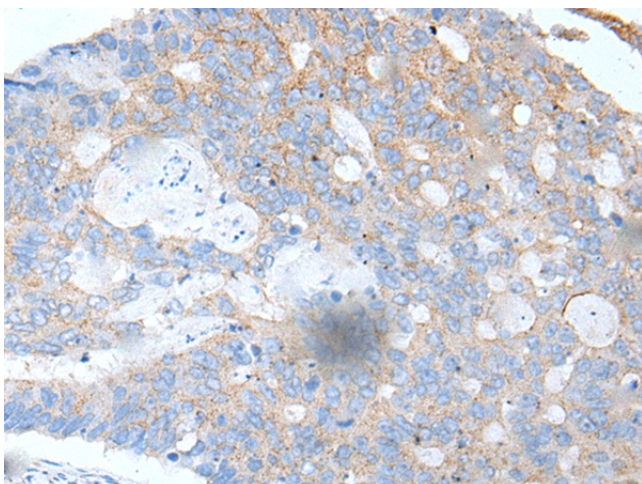
**Synonyms:** CD119; CDw119; FLJ45734; IFN-gamma-R1; IFNGR



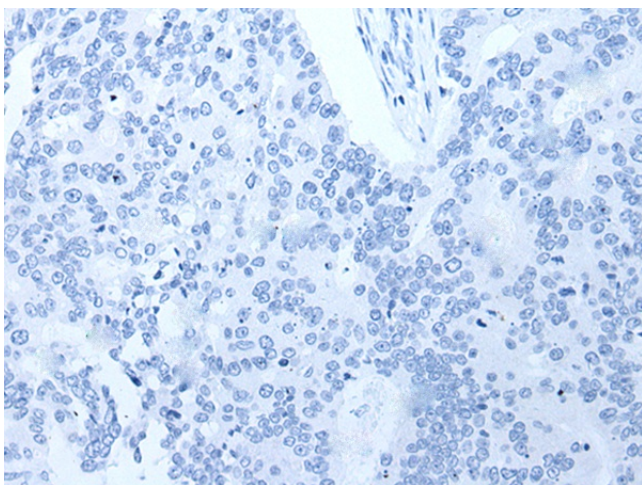
[View online »](#)

**Product images:**

Gel: 8%SDS-PAGE  
Lysate: 40 µg  
Lane: HEPG2 cell lysate  
Primary antibody: [TA367686] (IFNGR1 Antibody)  
at dilution 1/300  
Secondary antibody: Goat anti rabbit IgG at  
1/8000 dilution  
Exposure time: 10 seconds



Immunohistochemistry of paraffin-embedded  
Human colorectal cancer tissue using [TA367686]  
(IFNGR1 Antibody) at dilution 1/30 (Original  
magnification: ×200)



Immunohistochemistry of paraffin-embedded  
Human colorectal cancer tissue using [TA367686]  
(IFNGR1 Antibody) at dilution 1/30, treated with  
synthetic peptide. (Original magnification: ×200)