

## Product datasheet for **TA367684**

### IFITM1 Rabbit Polyclonal Antibody

#### Product data:

Product Type:	Primary Antibodies
Applications:	IHC, WB
Recommended Dilution:	WB: 200-1000 WB positive control: K562 and HepG2 cell lysates IHC: 25-100 Positive control: Human thyroid cancer Predicted cell location: Cytoplasm and Cell membrane
Reactivity:	Human, Mouse
Host:	Rabbit
Isotype:	IgG
Clonality:	Polyclonal
Immunogen:	Synthetic peptide of human IFITM1
Formulation:	pH7.4 PBS, 0.05% NaN <sub>3</sub> , 40% Glycerol
Concentration:	lot specific
Purification:	Antigen affinity purification
Conjugation:	Unconjugated
Storage:	Store at -20°C.
Stability:	1 year
Predicted Protein Size:	14 kDa
Gene Name:	interferon induced transmembrane protein 1
Database Link:	<a href="#">Entrez Gene 8519 Human P13164</a>



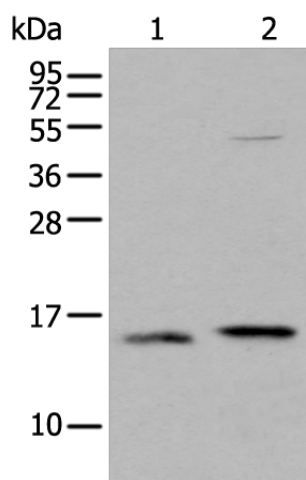
[View online »](#)

**Background:**

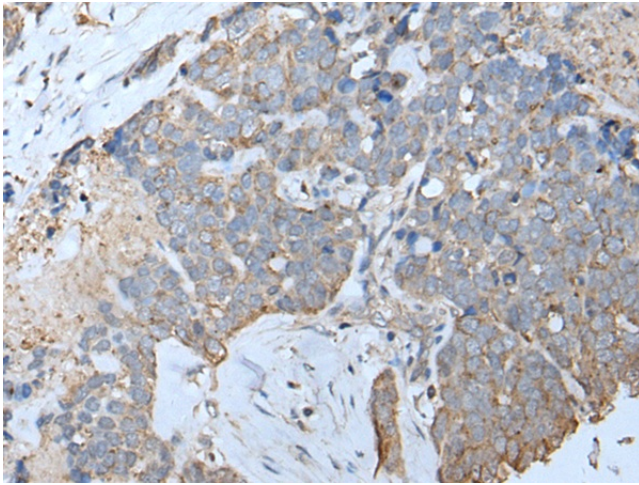
Interferons (IFNs) are potential antitumor agents, as they exhibit antiproliferative and differentiating properties, in addition to functioning in the defense against microbial infections. IFN exposure induces the regulation of expression levels of cellular proteins that mediate the pleiotropic effects of interferons. These effects may be mediated by soluble factors or by cell-cell interactions involving specific membrane proteins. The IFITM family of proteins are transmembrane proteins so named because their expression is IFN-inducible. IFITM proteins have been found upregulated in human colorectal carcinomas. Both mouse IFITM1 (also known as CD225) and IFITM3 demonstrate expression on the cell surfaces of primordial germ cells in a developmentally-regulated manner. They presumably modulate cell adhesion and influence cell differentiation. IFITM1 activity is required for primordial germ cell transit, and IFITM1 acts as a repulsive molecule by repelling non-IFITM1-expressing primordial germ cells from the mesoderm into the endoderm.

**Synonyms:**

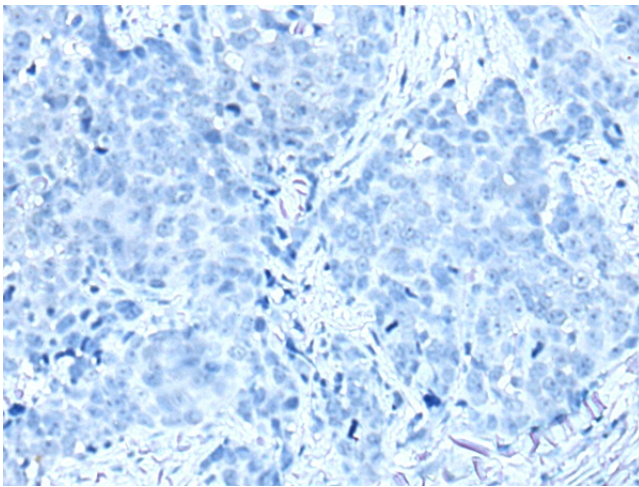
9-27; CD225; IFI17; LEU13

**Product images:**

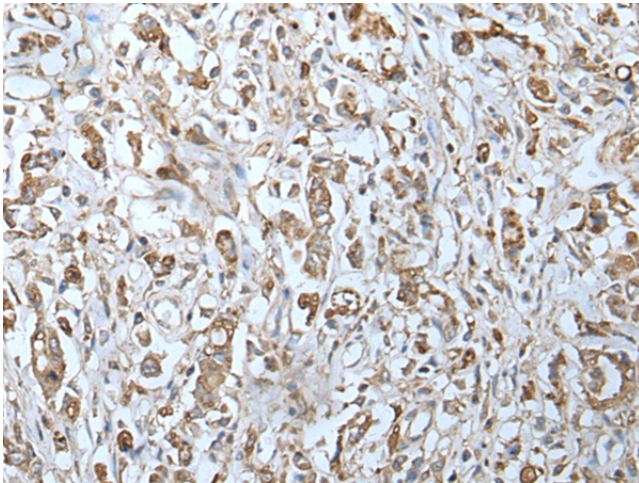
Gel: 12%SDS-PAGE  
Lysate: 40 µg  
Lane 1-2: K562 and HepG2 cell lysates  
Primary antibody: TA367684 (IFITM1 Antibody) at dilution 1/200  
Secondary antibody: Goat anti rabbit IgG at 1/8000 dilution  
Exposure time: 30 seconds



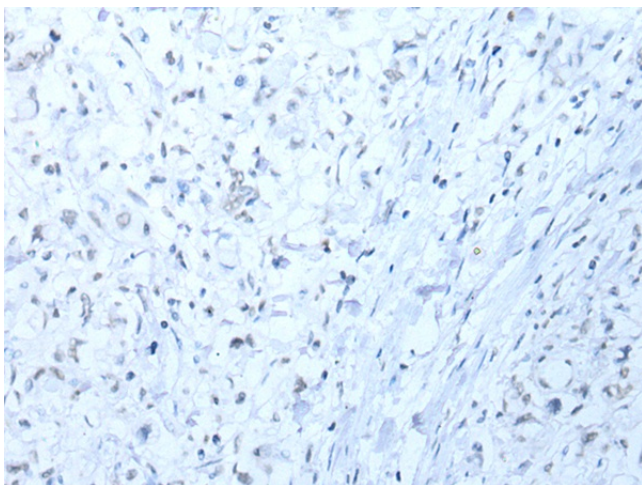
Immunohistochemistry of paraffin-embedded Human thyroid cancer tissue using TA367684 (IFITM1 Antibody) at dilution 1/20 (Original magnification: x200)



Immunohistochemistry of paraffin-embedded Human thyroid cancer tissue using TA367684 (IFITM1 Antibody) at dilution 1/20, treated with synthetic peptide. (Original magnification: x200)



Immunohistochemistry of paraffin-embedded Human gastric cancer tissue using TA367684 (IFITM1 Antibody) at dilution 1/20 (Original magnification: x200)



Immunohistochemistry of paraffin-embedded Human gastric cancer tissue using TA367684 (IFITM1 Antibody) at dilution 1/20, treated with synthetic peptide. (Original magnification:  $\times 200$ )