

Product datasheet for **TA367680**

Hsp47 (SERPINH1) Rabbit Polyclonal Antibody

Product data:

Product Type:	Primary Antibodies
Applications:	IHC, WB
Recommended Dilution:	WB: 200-1000 WB positive control: Human fetal liver tissue □ NIH/3T3 □ A431 □ HeLa □ 293T and Hepg2 cell lysates IHC: 25-100 Positive control: Human colorectal cancer Predicted cell location: Cytoplasm
Reactivity:	Human, Mouse, Rat
Host:	Rabbit
Isotype:	IgG
Clonality:	Polyclonal
Immunogen:	Synthetic peptide of human SERPINH1
Formulation:	pH7.4 PBS, 0.05% NaN ₃ , 40% Glycerol
Concentration:	lot specific
Purification:	Antigen affinity purification
Conjugation:	Unconjugated
Storage:	Store at -20°C.
Stability:	1 year
Predicted Protein Size:	46 kDa
Gene Name:	serpin family H member 1
Database Link:	Entrez Gene 871 Human P50454



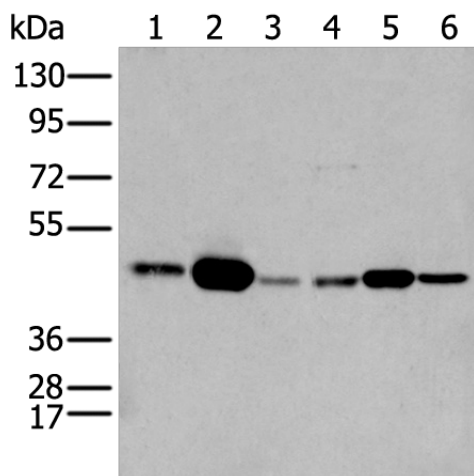
[View online »](#)

Background:

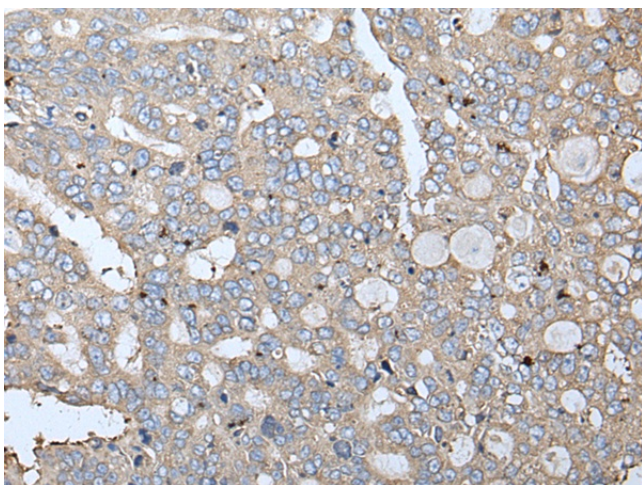
This gene encodes a member of the serpin superfamily of serine proteinase inhibitors. The encoded protein is localized to the endoplasmic reticulum and plays a role in collagen biosynthesis as a collagen-specific molecular chaperone. Autoantibodies to the encoded protein have been found in patients with rheumatoid arthritis. Expression of this gene may be a marker for cancer, and nucleotide polymorphisms in this gene may be associated with preterm birth caused by preterm premature rupture of membranes. Alternatively spliced transcript variants have been observed for this gene, and a pseudogene of this gene is located on the short arm of chromosome 9.

Synonyms:

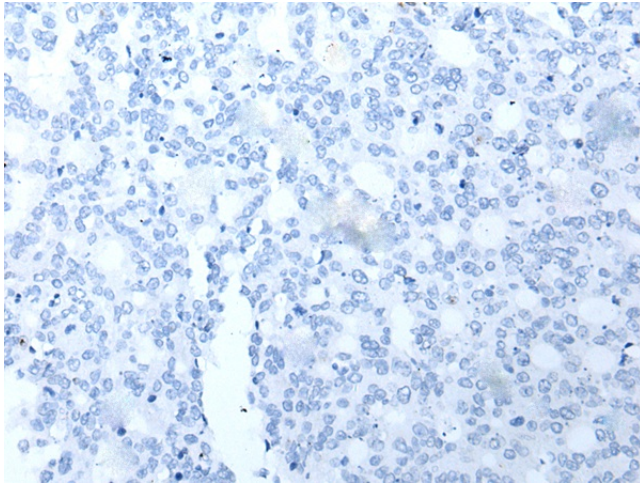
AsTP3; CBP1; CBP2; colligen; Colligin; colligin-1; colligin-2; gp46; HSP47; PIG14; PPRM; RA-A47; SERPINH2

Product images:


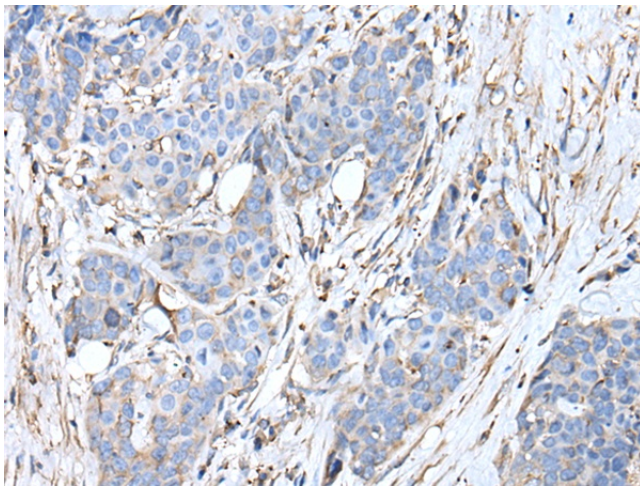
Gel: 8%SDS-PAGE
 Lysate: 40 µg
 Lane 1-6: Human fetal liver tissue
 NIH/3T3
 A431
 HeLa
 293T and Hepg2 cell lysates
 Primary antibody: TA367680 (SERPINH1 Antibody)
 at dilution 1/200
 Secondary antibody: Goat anti rabbit IgG at
 1/8000 dilution
 Exposure time: 30 seconds



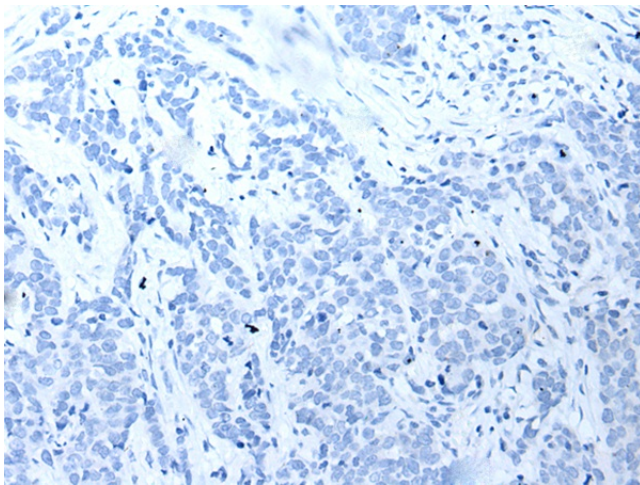
Immunohistochemistry of paraffin-embedded
 Human colorectal cancer tissue using TA367680
 (SERPINH1 Antibody) at dilution 1/25 (Original
 magnification: ×200)



Immunohistochemistry of paraffin-embedded Human colorectal cancer tissue using TA367680 (SERPINH1 Antibody) at dilution 1/25, treated with synthetic peptide. (Original magnification: ×200)



Immunohistochemistry of paraffin-embedded Human thyroid cancer tissue using TA367680 (SERPINH1 Antibody) at dilution 1/25 (Original magnification: ×200)



Immunohistochemistry of paraffin-embedded Human thyroid cancer tissue using TA367680 (SERPINH1 Antibody) at dilution 1/25, treated with synthetic peptide. (Original magnification: ×200)