

## Product datasheet for **TA367678S**

### HSP27 (HSPB1) Rabbit Polyclonal Antibody

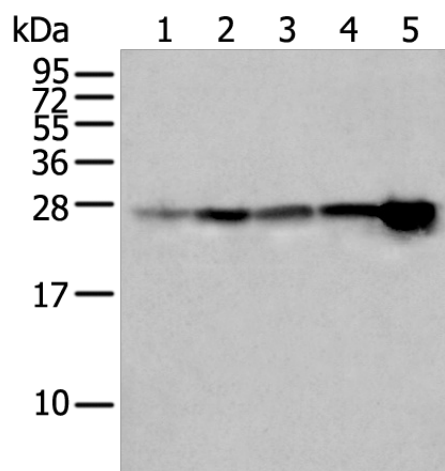
#### Product data:

Product Type:	Primary Antibodies
Applications:	IHC, WB
Recommended Dilution:	WB: 200-1000 WB positive control: 293T□Hela□K562□A431 and HEPG2 cell lysates IHC: 25-100 Positive control: Human breast cancer Predicted cell location: Cytoplasm or Nucleus
Reactivity:	Human
Host:	Rabbit
Isotype:	IgG
Clonality:	Polyclonal
Immunogen:	Synthetic peptide of human HSPB1
Formulation:	pH7.4 PBS, 0.05% NaN <sub>3</sub> , 40% Glycerol
Purification:	Antigen affinity purification
Conjugation:	Unconjugated
Storage:	Store at -20°C.
Stability:	1 year
Predicted Protein Size:	23 kDa
Gene Name:	heat shock protein family B (small) member 1
Database Link:	<a href="#">Entrez Gene 3315 Human P04792</a>
Background:	The protein encoded by this gene is induced by environmental stress and developmental changes. The encoded protein is involved in stress resistance and actin organization and translocates from the cytoplasm to the nucleus upon stress induction. Defects in this gene are a cause of Charcot-Marie-Tooth disease type 2F (CMT2F) and distal hereditary motor neuropathy (dHMN).
Synonyms:	CMT2F; DKFZp586P1322; HMN2B; HS.76067; Hsp25; HSP27; HSP28; SRP27

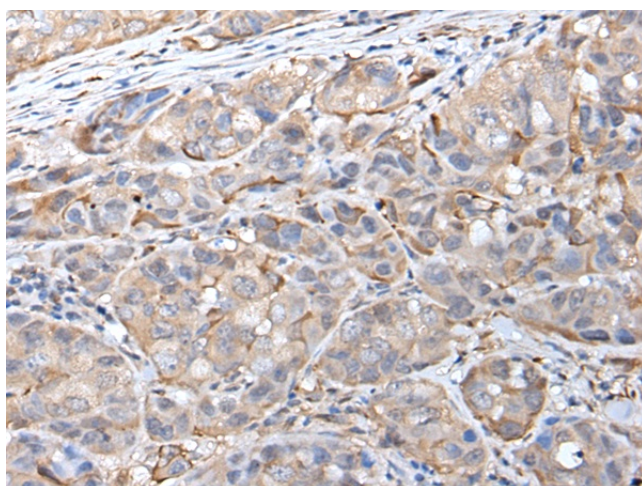


[View online »](#)

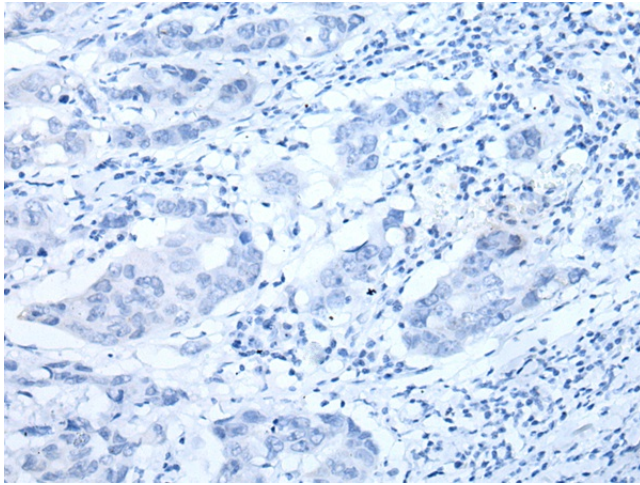
Product images:



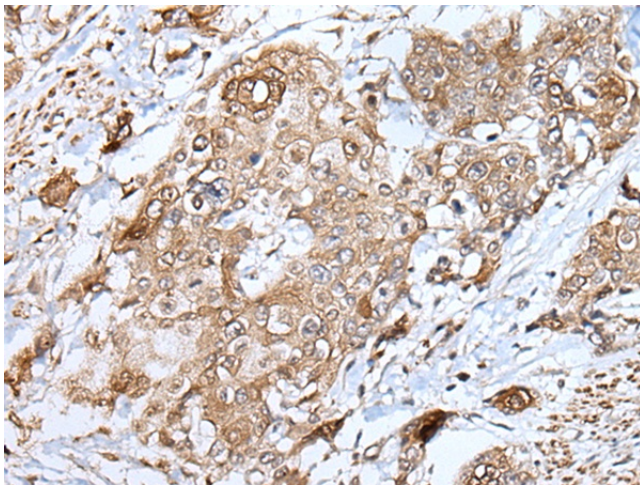
Gel: 12%SDS-PAGE  
 Lysate: 40 µg  
 Lane 1-5: 293T  
 HeLa  
 K562  
 A431 and HEPG2 cell lysates  
 Primary antibody: [TA367678] (HSPB1 Antibody)  
 at dilution 1/250  
 Secondary antibody: Goat anti rabbit IgG at  
 1/8000 dilution  
 Exposure time: 2 seconds



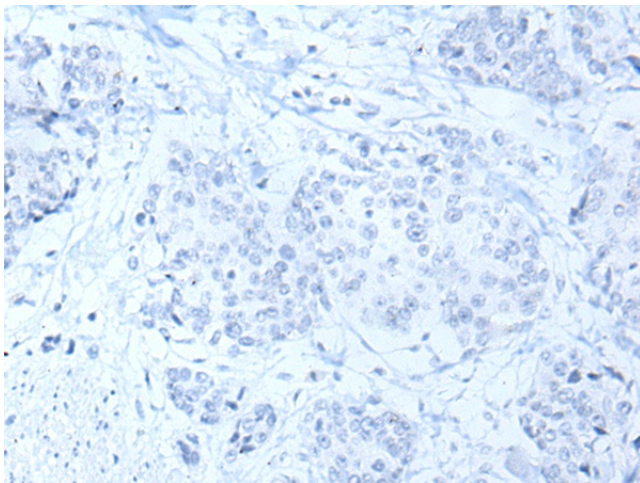
Immunohistochemistry of paraffin-embedded  
 Human breast cancer tissue using [TA367678]  
 (HSPB1 Antibody) at dilution 1/25 (Original  
 magnification: ×200)



Immunohistochemistry of paraffin-embedded Human breast cancer tissue using [TA367678] (HSPB1 Antibody) at dilution 1/25, treated with synthetic peptide. (Original magnification: ×200)



Immunohistochemistry of paraffin-embedded Human prostate cancer tissue using [TA367678] (HSPB1 Antibody) at dilution 1/25 (Original magnification: ×200)



Immunohistochemistry of paraffin-embedded Human prostate cancer tissue using [TA367678] (HSPB1 Antibody) at dilution 1/25, treated with synthetic peptide. (Original magnification: ×200)