

Product datasheet for **TA367667**

CXCL16 Rabbit Polyclonal Antibody

Product data:

| | |
|-------------------------|--|
| Product Type: | Primary Antibodies |
| Applications: | WB |
| Recommended Dilution: | WB: 200-1000 WB positive control: Human fetal liver tissue lysate |
| Reactivity: | Human |
| Host: | Rabbit |
| Isotype: | IgG |
| Clonality: | Polyclonal |
| Immunogen: | Synthetic peptide of human CXCL16 |
| Formulation: | pH7.4 PBS, 0.05% NaN ₃ , 40% Glycerol |
| Concentration: | lot specific |
| Purification: | Antigen affinity purification |
| Conjugation: | Unconjugated |
| Storage: | Store at -20°C. |
| Stability: | 1 year |
| Predicted Protein Size: | 28 kDa |
| Gene Name: | C-X-C motif chemokine ligand 16 |
| Database Link: | Entrez Gene 58191 Human Q9H2A7 |



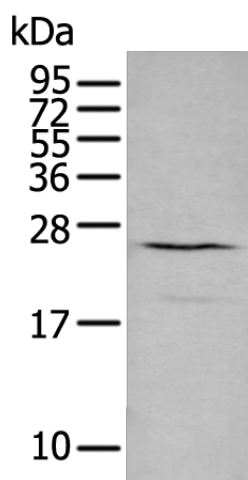
[View online »](#)

Background:

CXCL16, also known as SR-PSOX (scavenger receptor for phosphatidylserine and oxidized lipoprotein), binds to CXCR6/Bonzo/ STRL33, induces a strong chemotactic response and induces calcium mobilization. CXCL16, an alpha (CXC) chemokine, also has characteristics of CC chemokines and a structure similar to fractalkine (neurotactin) in having a transmembrane region and a chemokine domain suspended by a mucin-like stalk. Northern blot analysis of mouse and human tissues detect a 2.2-kb CXCL16 transcript in spleen, lymph nodes, Peyer patches, lung, kidney, small intestine, and thymus, with weak expression in heart and liver and no expression in brain and bone marrow. Flow cytometry and Western blot analysis demonstrate expression of a glycosylated cell-surface protein and a cell supernatant soluble protein.

Synonyms:

CXCLG16; SCYB16; SR-PSOX; SRPSOX

Product images:

Gel: 12%SDS-PAGE
Lysate: 40 µg
Lane: Human fetal liver tissue lysate
Primary antibody: TA367667 (CXCL16 Antibody)
at dilution 1/350
Secondary antibody: Goat anti rabbit IgG at
1/8000 dilution
Exposure time: 20 seconds