

## Product datasheet for **TA367664**

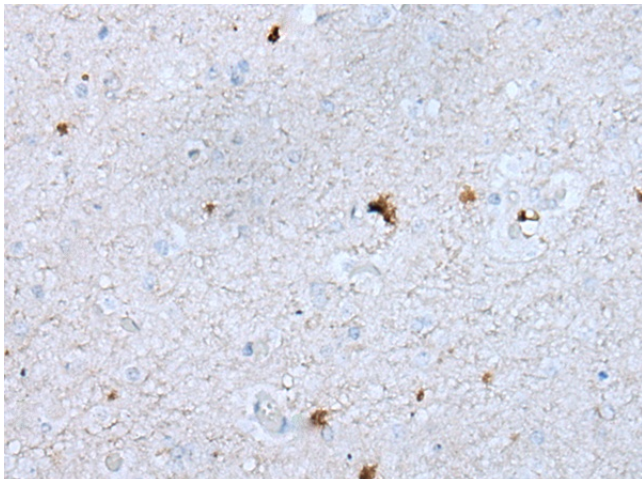
### **GAS2L1 Rabbit Polyclonal Antibody**

#### **Product data:**

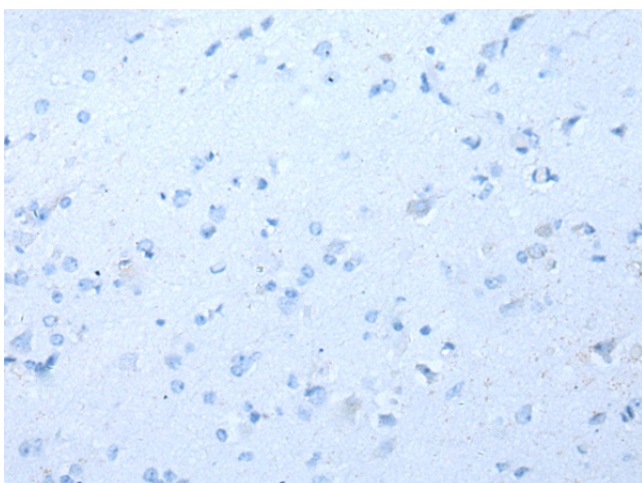
Product Type:	Primary Antibodies
Applications:	IHC
Recommended Dilution:	IHC: 10-50 Positive control: Human brain Predicted cell location: Cytoplasm
Reactivity:	Human, Mouse
Host:	Rabbit
Isotype:	IgG
Clonality:	Polyclonal
Immunogen:	Synthetic peptide of human GAS2L1
Formulation:	pH7.4 PBS, 0.05% NaN <sub>3</sub> , 40% Glycerol
Concentration:	lot specific
Purification:	Antigen affinity purification
Conjugation:	Unconjugated
Storage:	Store at -20°C.
Stability:	1 year
Gene Name:	growth arrest specific 2 like 1
Database Link:	<a href="#">Entrez Gene 10634 Human Q99501</a>
Background:	This gene encodes a member of the growth arrest-specific 2 protein family. This protein binds components of the cytoskeleton and may be involved in mediating interactions between microtubules and microfilaments. Alternate splicing results in multiple transcript variants. A pseudogene of this gene is found on chromosome 9.
Synonyms:	GAR22; MGC17243



[View online »](#)

**Product images:**

Immunohistochemistry of paraffin-embedded Human brain tissue using TA367664 (GAS2L1 Antibody) at dilution 1/30 (Original magnification: ×200)



Immunohistochemistry of paraffin-embedded Human brain tissue using TA367664 (GAS2L1 Antibody) at dilution 1/30, treated with synthetic peptide. (Original magnification: ×200)