

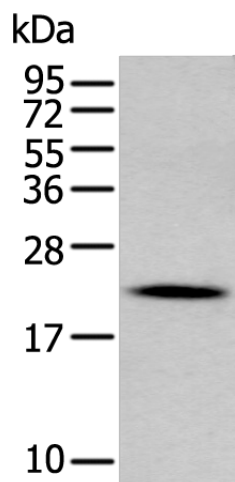
Product datasheet for **TA367660S**

Gastrokine 2 (GKN2) Rabbit Polyclonal Antibody

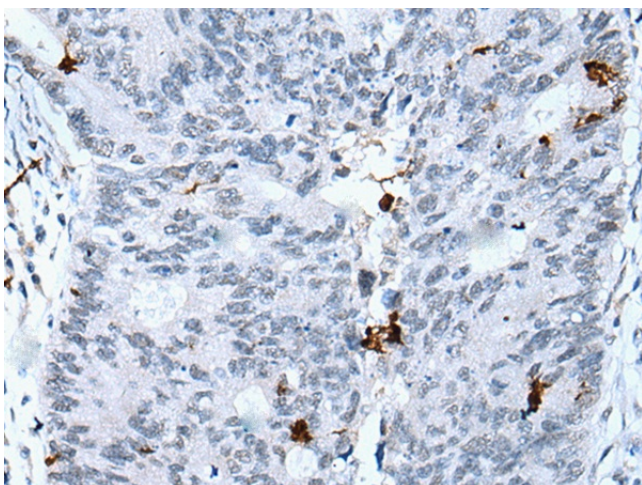
Product data:

| | |
|-------------------------|---|
| Product Type: | Primary Antibodies |
| Applications: | IHC, WB |
| Recommended Dilution: | WB: 200-1000 WB positive control: Mouse stomach tissue lysate IHC: 20-100 Positive control: Human colorectal cancer Predicted cell location: Secreted |
| Reactivity: | Human, Mouse |
| Host: | Rabbit |
| Isotype: | IgG |
| Clonality: | Polyclonal |
| Immunogen: | Synthetic peptide of human GKN2 |
| Formulation: | pH7.4 PBS, 0.05% NaN ₃ , 40% Glycerol |
| Purification: | Antigen affinity purification |
| Conjugation: | Unconjugated |
| Storage: | Store at -20°C. |
| Stability: | 1 year |
| Predicted Protein Size: | 20 kDa |
| Gene Name: | gastrokine 2 |
| Database Link: | Entrez Gene 200504 Human Q86XP6 |
| Background: | Gastrokine-2 is a putative gastric cancer-specific tumor suppressor gene, the loss of which is known to be involved in the development and progression of gastric cancer, and restoration of gastrokine-2 expression inhibits growth of gastric cancer cells in vitro. However, the underlying mechanism of these effects requires elucidation. |
| Synonyms: | BLOT; blottin; GDDR; PRO813; TFIZ1; VLT1465 |

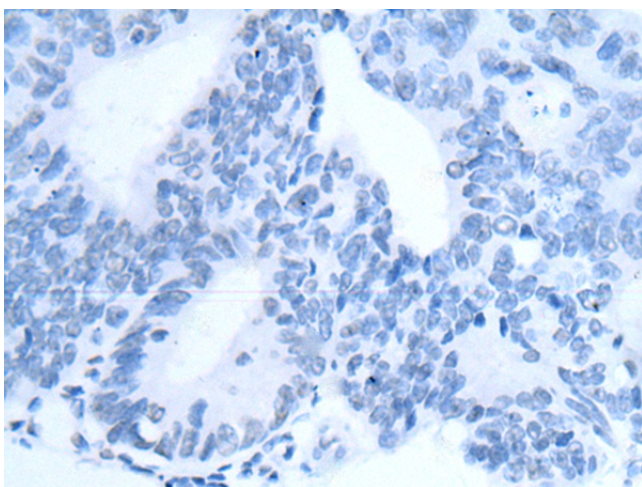

[View online »](#)

Product images:


Gel: 12%SDS-PAGE
 Lysate: 40 µg
 Lane: Mouse stomach tissue lysate
 Primary antibody: [TA367660] (GKN2 Antibody) at dilution 1/200
 Secondary antibody: Goat anti rabbit IgG at 1/8000 dilution
 Exposure time: 2 minutes



Immunohistochemistry of paraffin-embedded Human colorectal cancer tissue using [TA367660] (GKN2 Antibody) at dilution 1/30 (Original magnification: ×200)



Immunohistochemistry of paraffin-embedded Human colorectal cancer tissue using [TA367660] (GKN2 Antibody) at dilution 1/30, treated with synthetic peptide. (Original magnification: ×200)