

Product datasheet for **TA367660**

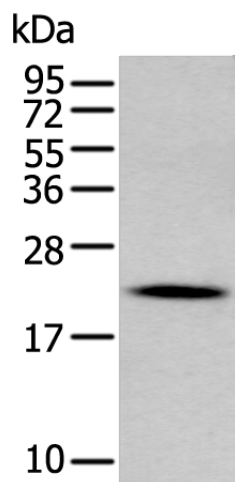
Gastrokin 2 (GKN2) Rabbit Polyclonal Antibody

Product data:

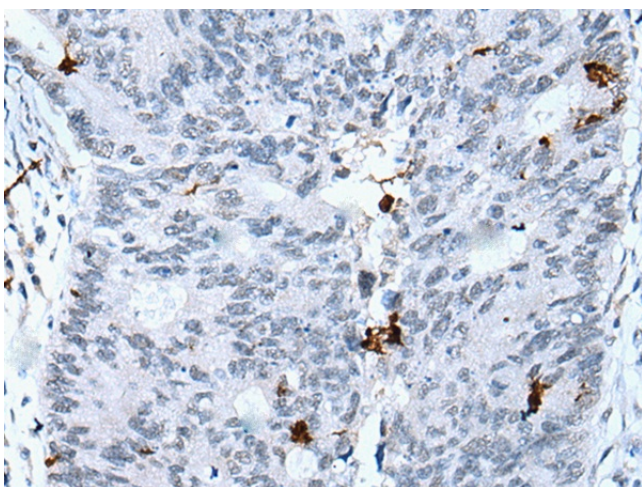
Product Type:	Primary Antibodies
Applications:	IHC, WB
Recommended Dilution:	WB: 200-1000 WB positive control: Mouse stomach tissue lysate IHC: 20-100 Positive control: Human colorectal cancer Predicted cell location: Secreted
Reactivity:	Human, Mouse
Host:	Rabbit
Isotype:	IgG
Clonality:	Polyclonal
Immunogen:	Synthetic peptide of human GKN2
Formulation:	pH7.4 PBS, 0.05% NaN ₃ , 40% Glycerol
Concentration:	lot specific
Purification:	Antigen affinity purification
Conjugation:	Unconjugated
Storage:	Store at -20°C.
Stability:	1 year
Predicted Protein Size:	20 kDa
Gene Name:	gastrokin 2
Database Link:	Entrez Gene 200504 Human Q86XP6
Background:	Gastrokin-2 is a putative gastric cancer-specific tumor suppressor gene, the loss of which is known to be involved in the development and progression of gastric cancer, and restoration of gastrokin-2 expression inhibits growth of gastric cancer cells in vitro. However, the underlying mechanism of these effects requires elucidation.
Synonyms:	BLOT; blottin; GDDR; PRO813; TFIZ1; VLT1465



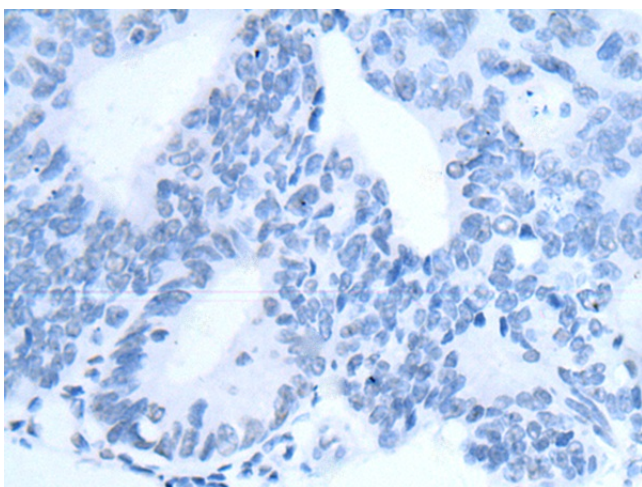
[View online »](#)

Product images:


Gel: 12%SDS-PAGE
 Lysate: 40 µg
 Lane: Mouse stomach tissue lysate
 Primary antibody: TA367660 (GKN2 Antibody) at dilution 1/200
 Secondary antibody: Goat anti rabbit IgG at 1/8000 dilution
 Exposure time: 2 minutes



Immunohistochemistry of paraffin-embedded Human colorectal cancer tissue using TA367660 (GKN2 Antibody) at dilution 1/30 (Original magnification: ×200)



Immunohistochemistry of paraffin-embedded Human colorectal cancer tissue using TA367660 (GKN2 Antibody) at dilution 1/30, treated with synthetic peptide. (Original magnification: ×200)